

6-8 Union Street, Blyth

£840 pcm Freehold

Lennon Properties are pleased to bring to the market this deceptively spacious ground floor retail unit situated on Union Street, Blyth. This premises is situated in an ideal location close to the Arriva Bus Station and also Wetherspoons (The Wallaw). There is a high level of passing traffic and great footfall available in this prime location.

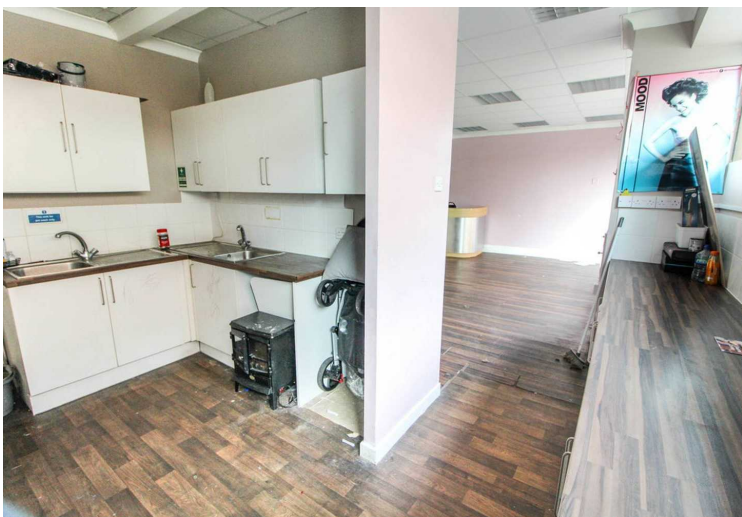
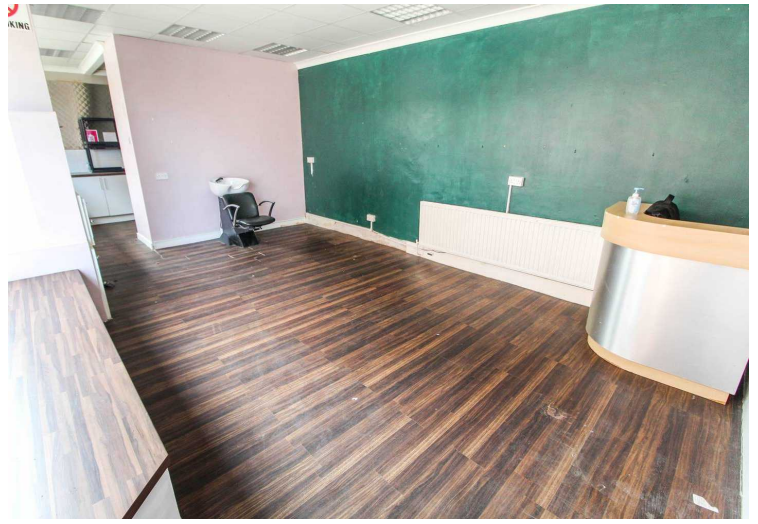
LEASE TERMS

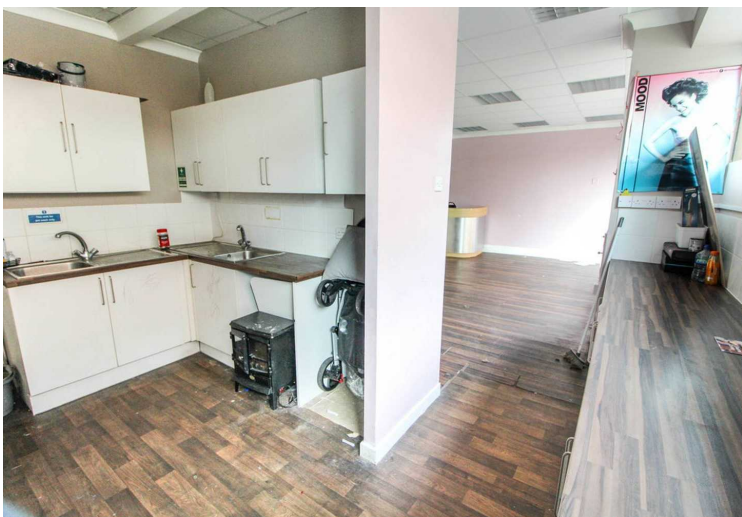
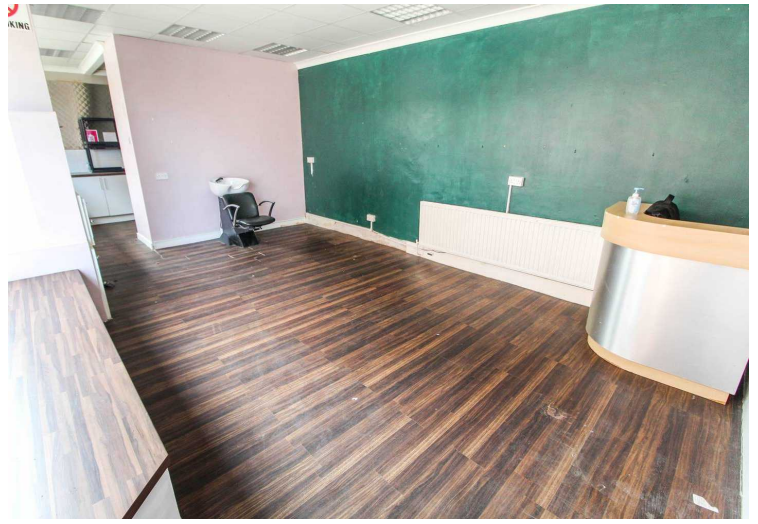
A new full repairing and insuring lease for a term to be agreed

BUSINESS RATES

Business Rates Relief Available. Interested parties are advised to make their own Business Rates enquiries.







You can include any text here. The text can be modified upon generating your brochure.





You can include any text here. The text can be modified upon generating your brochure.

