



97 Plessey Road, Blyth

£139,950 Freehold

This fantastic three bedroom semi detached house would make a fantastic family home and early viewings are essential. Located on Plessey Road in Blyth in a highly sought after area close to local shops, Blyth beach, Ridley Park, town centre and local amenities. The accommodation briefly comprises, lounge, dining room and kitchen. To the first floor three good sized bedrooms to and family bathroom. Externally the property has a garden rear. Off street parking available. To arrange your viewing please give our Blyth office a call.

HALLWAY

Via double glazed door.

LOUNGE

15' 0" x 15' 2" (4.57m x 4.63m)

Gas fire, double radiator, double glazed bay window.

DINING ROOM

11' 5" x 15' 1" (3.49m x 4.61m)

Under stairs cupboard, double radiator, French doors to rear.

KITCHEN

7' 10" x 11' 9" (2.40m x 3.59m)

Fitted with a range of wall and base units to round edged work tops. 1 1/2 stainless steel sink unit with mixer tap, tiled splash backs, double glazed window and door to rear.

LANDING

Loft access

BEDROOM ONE

13' 4" x 12' 4" (4.06m x 3.75m)

Fitted wardrobes, radiator, double glazed window.

BEDROOM TWO

12' 2" x 9' 1" (3.71m x 2.78m)

Built in cupboard, radiator, double glazed window

BEDROOM THREE

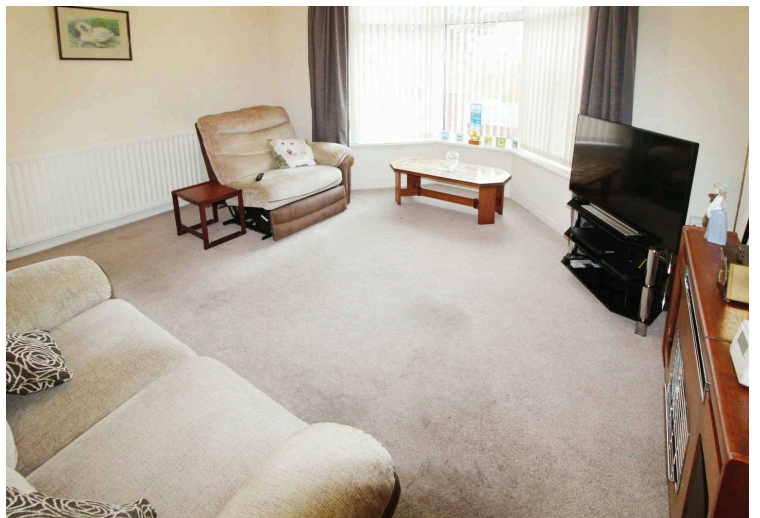
12' 5" x 9' 6" (3.79m x 2.89m)

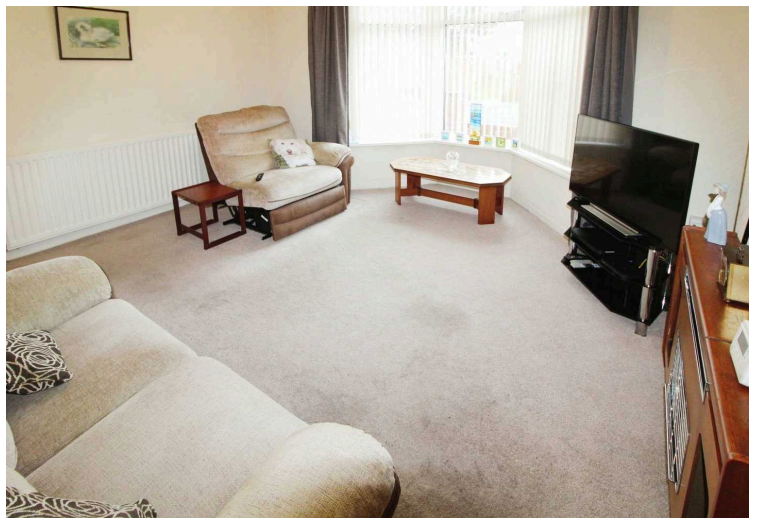
Single radiator, double glazed window.

SHOWER ROOM

6' 10" x 7' 1" (2.08m x 2.16m)

Low level wc, wash hand vanity basin, double shower cubical, with wall a mounted electric shower, UPVC panelling to walls. double glazed window.







Ground Floor



First Floor

This plan is for illustration purposes only and may not be representative of the property. Plan not to scale. Powered by PropertyBox



You can include any text here. The text can be modified upon generating your brochure.

