



26 Marlow Street, Blyth

£72,000

Enclosed rear yard • No upper chain • Council Tax A • Ideal investment property • Terraced • Viewings highly recommended • Close to transport links • Two double bedrooms • Close to town centre • EPC Rating E



Introducing this charming terraced property, close to public transport links and local amenities The property comprises of :- porch, lounge, kitchen,...

EPC Energy Efficiency Rating: E

EPC Environmental Impact Rating: E

LOUNGE

Dimensions: 15' 7" x 11' 11" (4.77m x 3.64m). UPVC bay window to the front, storage heater, under star cupboard and stairs.

MAIN DESCRIPTION

Introducing this charming terraced property, close to public transport links and local amenities The property comprises of :- porch, lounge, kitchen, to the first floor there are two double bedrooms and bathroom, externally there is a front garden and enclosed rear yard. This lovely terraced property presents an excellent opportunity for couples or students, investors and first time buyers. Viewing highly recommended, call us today to book you viewing.

LANDING

Access to the loft, bathroom, bedroom one and bedroom two.

EXTERNAL

Front garden with enclosed rear yard.

PORCH

UPVC door to the front and door to the lounge.

BATHROOM

Dimensions: 7' 5" x 4' 1" (2.27m x 1.26m). Low level W/C, sink, panelled bath with over electric shower and extractor fan.

KITCHEN

Dimensions: 11' 11" x 7' 5" (3.65m x 2.27m). UPVC window to the rear, UPVC door to the rear, storage heater, stainless steel sink with mixer tap, plumbed for a washing machine, electric cooker, wooden roll top benches, wall and base units.

BEDROOM TWO

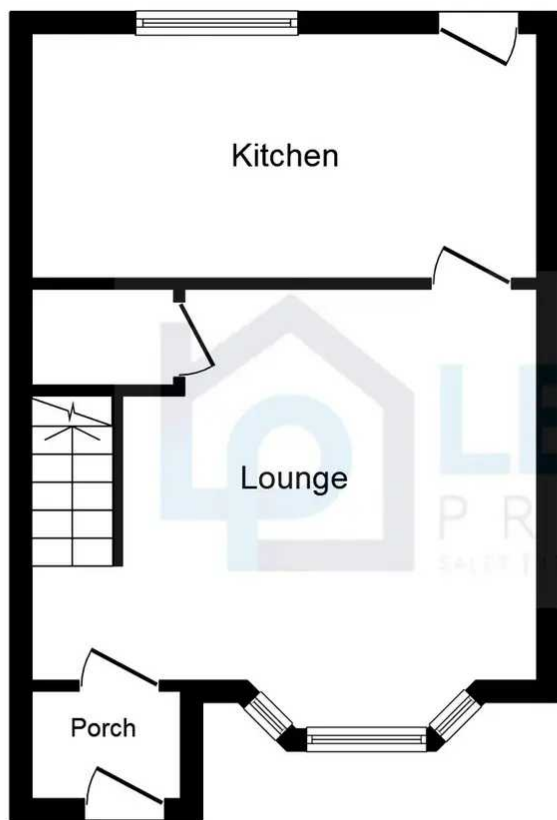
Dimensions: 7' 5" x 11' 11" (2.27m x 3.65m). UPVC window to the rear and storage heater.

BEDROOM ONE

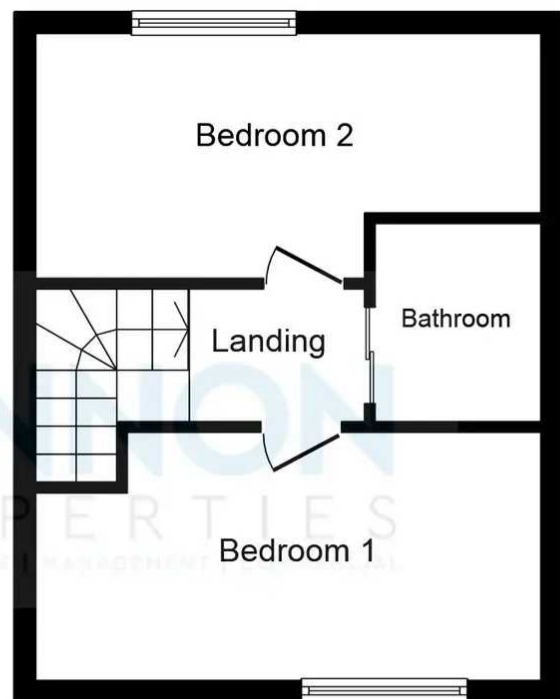
Dimensions: 11' 0" x 8' 9" (3.36m x 2.68m). UPVC window to the front and storage radiator.







Ground Floor



First Floor

This plan is for illustration purposes only and may not be representative of the property. Plan not to scale. Powered by PropertyBox

You can include any text here. The text can be modified upon generating your brochure.