



## 115 Middleton Street, Blyth

£210,000 Freehold

This semi-detached property is in good condition and boasts a range of unique features. With three reception rooms and one kitchen, it offers ample space for families or couples. The property comprises three bedrooms, with the master bedroom featuring a charming bay window and fitted sliding robes. The second bedroom is a double and provides comfortable living space. The kitchen is equipped with modern appliances and benefits from an abundance of natural light. The property also offers a spacious garden, perfect for outdoor activities and relaxation. The high ceilings throughout the property add to the sense of space and grandeur. Situated in a sought-after location, this property is conveniently located near schools and local amenities. The garage and parking provide additional convenience for residents. The property is in council tax band C. Overall, this well-maintained semi-detached property with its period charm, versatile rooms, and attractive features, presents an

**ENTRANCE HALLWAY**

Via upvc front door, stairs to 1st floor

**LOUNGE**

Dimensions: 15' 8" x 13' 5" (4.80m x 4.11m). Bay window to front, radiator, back boiler, gas fire.

**RECEPTION TWO**

Dimensions: 15' 5" x 12' 3" (4.72m x 3.74m). Window to rear, gas fire.

**DINING ROOM**

Dimensions: 10' 2" x 7' 10" (3.12m x 2.41m). Upvc window to rear, radiator x 2

**KITCHEN**

Dimensions: 9' 9" x 8' 3" (2.98m x 2.53m). Fitted base and wall units with work surfaces, single drainer sink and mixer tap, gas hob and electric oven, plumbed for washing machine, upvc window and door to rear.

**FIRST FLOOR LANDING**

Window to side, loft access, doors to three bedroom and bathroom.

**BATHROOM**

Dimensions: 8' 4" x 6' 5" (2.55m x 1.98m). Three piece bathroom suite comprising panelled bath, low level wc, pedestal wash hand basin, vertical chrome radiator, spotlights, extractor fan, cupboard housing water tank.

**BEDROOM ONE**

Dimensions: 15' 8" x 11' 7" (4.79m x 3.55m). Upvc window to front, radiator, radiator, fitted sliding door wardrobes.

**BEDROOM TWO**

Dimensions: 13' 0" x 9' 8" (3.98m x 2.97m). Upvc window to rear, radiator, fitted wardrobes.

**BEDROOM THREE**

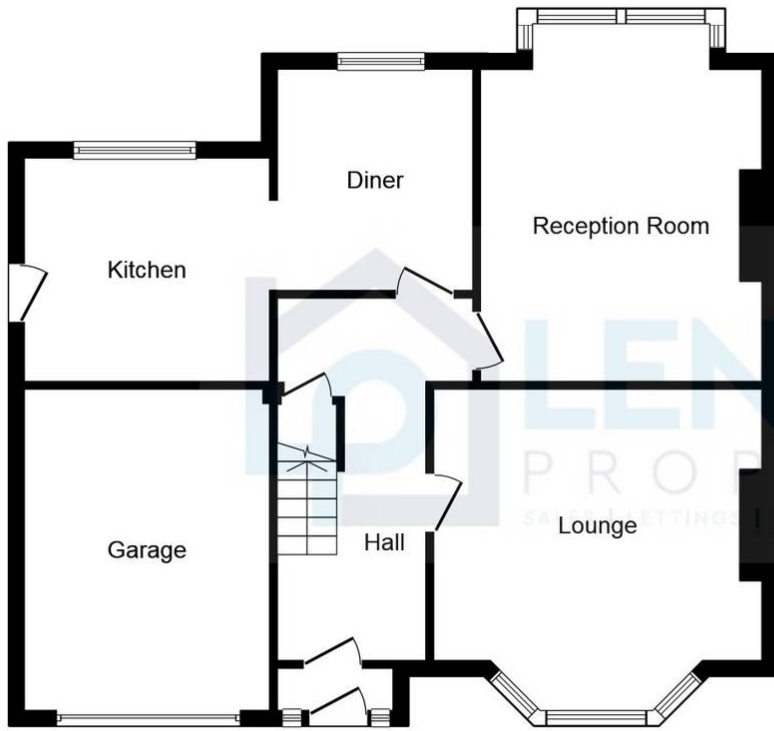
Dimensions: 8' 7" x 7' 5" (2.63m x 2.27m). Upvc to front, radiator.

**EXTERNAL**

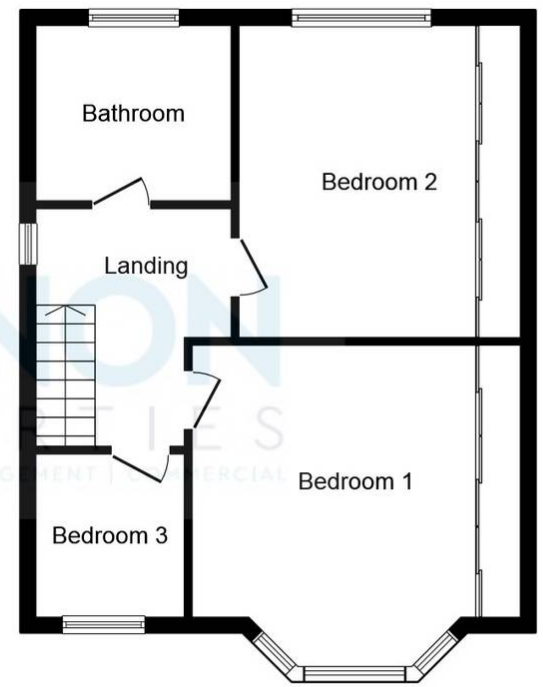
Enclosed rear garden, paved with low maintenance. Shed, Gate access to front.







**Ground Floor**



**First Floor**

This plan is for illustration purposes only and may not be representative of the property. Plan not to scale. Powered by PropertyBox

