



## 28 Stirling Drive, Bedlington

£105,000 Freehold

Situated on the desirable Stirling Drive, Bowyer Grange in the market town of Bedlington, this property offers convenient access to local amenities at Bedlington Station and the A1089 Spine Road. The interior features an entrance lobby, a living room with stairs to the first-floor accommodation, and a kitchen. Upstairs, there are two bedrooms and a bathroom. Outside, an L-shaped, low-maintenance, enclosed rear garden complements the home. Additionally, off-street parking is available close to the property. \*\* No upper chain \*\*

## MAIN DESCRIPTION

Situated on the desirable Stirling Drive, Bowyer Grange in the market town of Bedlington, this property offers convenient access to local amenities at Bedlington Station and the A1089 Spine Road. The interior features an entrance lobby, a living room with stairs to the first-floor accommodation, and a kitchen. Upstairs, there are two bedrooms and a bathroom. Outside, an L-shaped, low-maintenance, enclosed rear garden complements the home. Additionally, off-street parking is available close to the property. \*\* No upper chain \*\*

## PORCH

Door to lounge

## LOUNGE

Dimensions: 13' 8" x 11' 8" (4.17m x 3.57m). UPVC bay window to front, two radiators, stairs

## KITCHEN

Dimensions: 11' 7" x 8' 2" (3.54m x 2.49m). UPVC to rear, UPVC door to rear, wall and base units, wood effect work surfaces, electrical hob and oven, sink and mixer tap, integrated fridge freezer, radiator, extractor hood, tiled splashbacks

## LANDING

Access to two bedrooms, bathroom

## BEDROOM ONE

Dimensions: 11' 8" x 8' 6" (3.58m x 2.61m). UPVC to rear, radiator

## BEDROOM TWO

Dimensions: 11' 8" x 6' 4" (3.58m x 1.94m). UPVC to front, radiator, storage cupboard, loft access

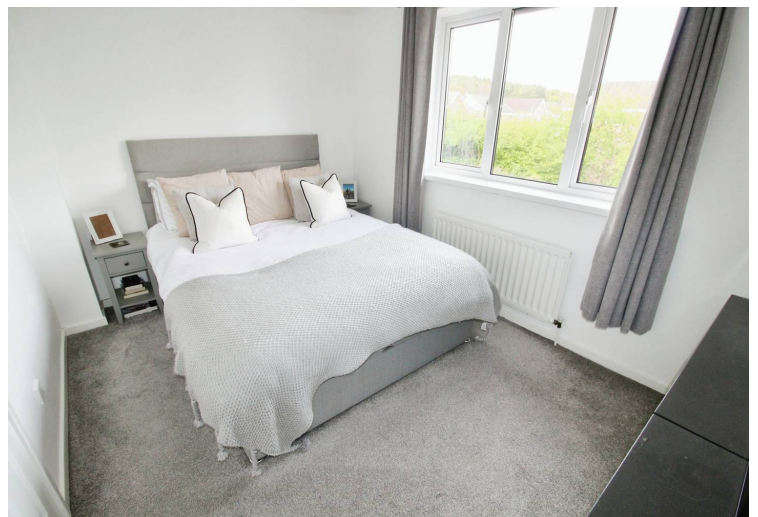
## BATHROOM

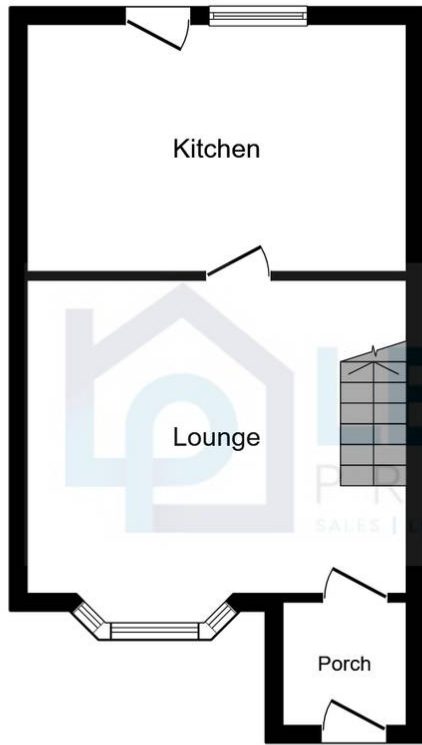
Dimensions: 6' 5" x 5' 6" (1.97m x 1.68m). low level w/c, sink, panel bath, wall mounted shower

## EXTERNALLY

Dimensions: 0' x 0' 0" (0m. enclosed garden L shape, artificial grass, gate access at rear, garden tap

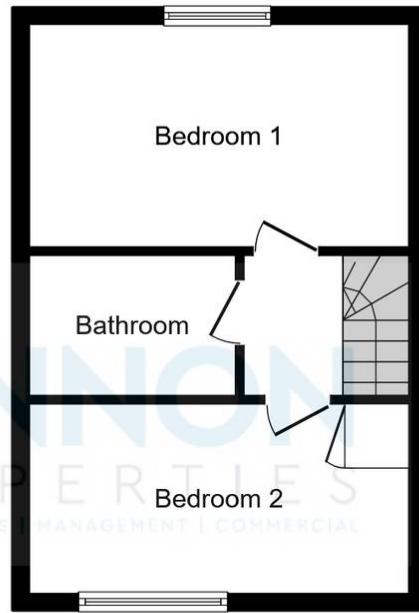






### Ground Floor

Floor area 34.7 m<sup>2</sup> (373 sq.ft.)



### First Floor

Floor area 31.7 m<sup>2</sup> (342 sq.ft.)

**TOTAL: 66.4 m<sup>2</sup> (715 sq.ft.)**

This floor plan is for illustrative purposes only. It is not drawn to scale. Any measurements, floor areas (including any total floor area), openings and orientations are approximate. No details are guaranteed, they cannot be relied upon for any purpose and do not form any part of any agreement. No liability is taken for any error, omission or misstatement. A party must rely upon its own inspection(s). Powered by [www.Propertybox.io](http://www.Propertybox.io)

