



12 Ridley Avenue, Blyth

£250,000 Freehold

Three bedrooms • Semi detached period property • Four reception rooms • Rare to the market • Highly sought after location • Stunning period features • Driveway and garage • Enclosed rear garden • Not to be missed



Council Tax band: D

Tenure: Freehold

EPC Energy Efficiency Rating: D

EPC Environmental Impact Rating: D

Entrance

Via Hard wood front door into Vestibule

Vestibule

Wood door leading into hallway

Hallway

Understairs cupboard, radiator., stairs to first floor landing.

Front Room

13' 0" x 11' 11" (3.97m x 3.64m)

Radiator, double glazed bay window to the front

lounge

16' 6" x 12' 2" (5.03m x 3.71m)

Feature fire place with electric fire, radiator, double glazed patio doors to rear garden

Dining Room

12' 0" x 12' 8" (3.66m x 3.86m)

Radiator, double glazed window.

Office

12' 6" x 8' 1" (3.81m x 2.46m)

Downstairs wc

Low level wc, wash hand basin, double glazed window

kitchen

18' 5" x 6' 4" (5.61m x 1.93m)

Fitted with a range of wall and base units to round edged work tops, stainless steel sink with mixer taps, space for cooker and fridge freezer, integrated dish washer, radiator double glazed window.

Bedroom One

13' 3" x 9' 2" (4.04m x 2.79m)

Fitted wardrobes, radiator, double glazed window.

Bedroom Two

10' 9" x 8' 6" (3.28m x 2.59m)

Radiator, double glazed window to rear.

Bedroom Three

10' 9" x 7' 4" (3.28m x 2.24m)

Fitted wardrobes, radiator, double glazed window

Shower Room

Walk in shower cubical, wash hand basin, radiator, double glazed window,

WC

Low level wc, double glazed window

GARDEN

To the front of the property there is a gravelled garden and driveway leading to single garage. To the rear there is a good sized enclosed garden mainly lawn with patio areas and fence boundaries

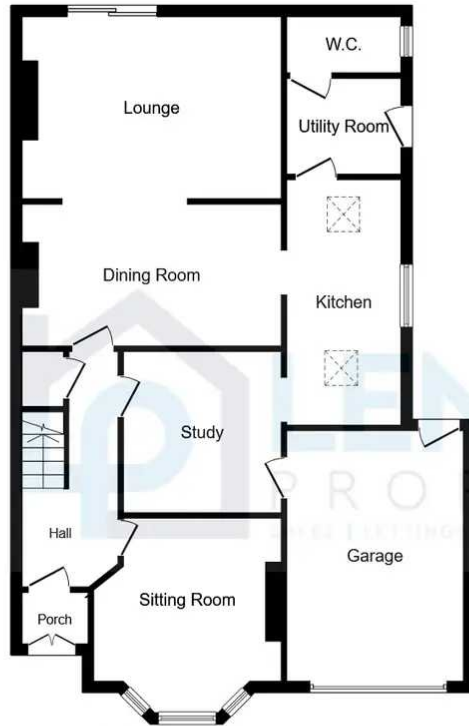
GARAGE

Single Garage

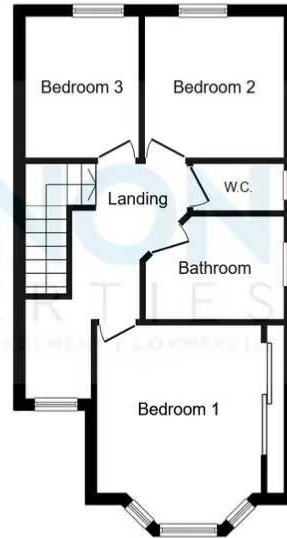
There is a single garage and a driveway to the front of the house.







Ground Floor
 Floor area 96.3 m² (1,036 sq.ft.)



First Floor
 Floor area 43.1 m² (464 sq.ft.)

TOTAL: 139.4 m² (1,500 sq.ft.)

This floor plan is for illustrative purposes only. It is not drawn to scale. Any measurements, floor areas (including any total floor area), openings and orientations are approximate. No details are guaranteed, they cannot be relied upon for any purpose and do not form any part of any agreement. No liability is taken for any error, omission or misstatement. A party must rely upon its own inspection(s). Powered by www.Propertybox.io

You can include any text here. The text can be modified upon generating your brochure.