



## 20 Nidderdale Close, Blyth

£95,000 Freehold

**\*\*TWO DOUBLE BEDROOMS - END TERRACED HOUSE - SIDE CONSERVATORY - MODERN BATHROOM - PRIVATE SPACIOUS REAR GARDEN - LOUNGE/DINER - GAS CENTRAL HEATING - DOUBLE GLAZING - NO UPPER CHAIN\*\*** Lennon Properties is delighted to offer this two-bedroom end terraced house located in a quiet cul-de-sac on Nidderdale Close in Blyth.

The property is well-presented, featuring an entrance hallway, kitchen, lounge/diner, and conservatory. The first floor comprises two double bedrooms and a contemporary family bathroom. Additionally, the property includes a driveway for off-street parking and a very impressive enclosed rear garden. This property is likely to attract a range of buyers, and prompt viewing is strongly advised. Available with NO UPPER CHAIN!

**Hallway**

Composite front door, UPVC window to side, radiator, stairs, access to the lounge and kitchen.

**Lounge/Diner**

19' 7" x 11' 2" (5.96m x 3.40m)

UPVC bow window to the front, gas fire, two radiators, UPVC french doors to the rear.

**Kitchen**

8' 11" x 7' 11" (2.71m x 2.41m)

UPVC window to rear, stainless steel sink with mixer tap, wall and base units, radiator, gas hob, electric oven, extractor hood, wooden effect roll top benches, storage cupboard, UPVC door to the side.

**Conservatory**

12' 2" x 11' 1" (3.72m x 3.39m)

UPVC French doors to garden, UPVC windows to three sides, radiator, plastic roof and log burner.

**Landing**

UPVC window to side, access to bedrooms, storage cupboard and bathroom and loft.

**Bedroom one**

14' 11" x 9' 1" (4.54m x 2.77m)

UPVC window to the front, radiator, fitted wardrobes, storage cupboard with combi boiler.

**Bedroom two**

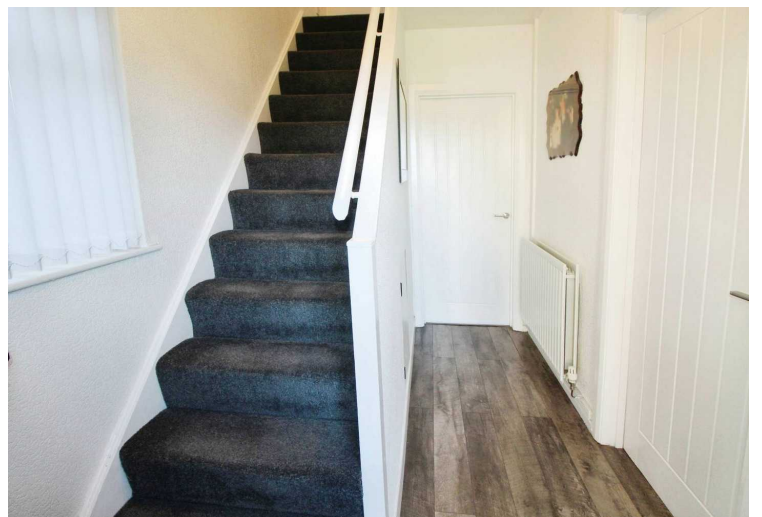
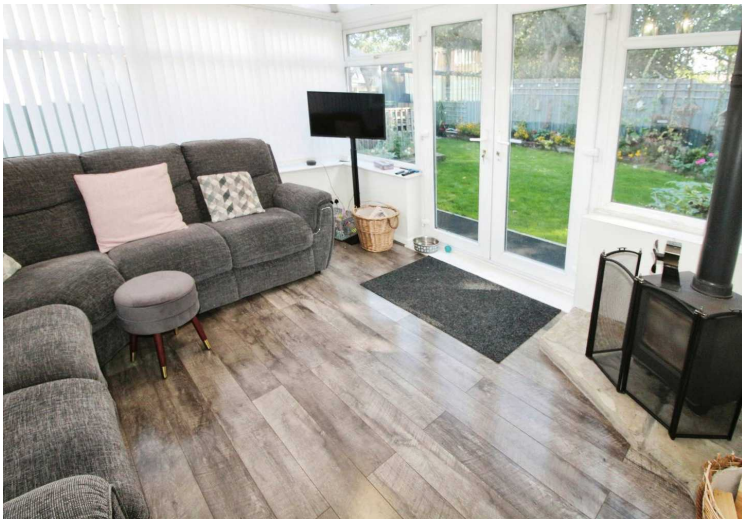
10' 6" x 8' 8" (3.20m x 2.64m)

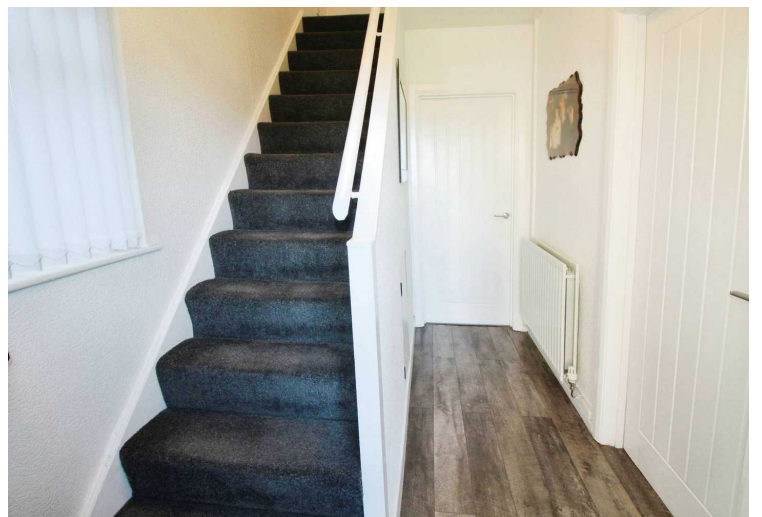
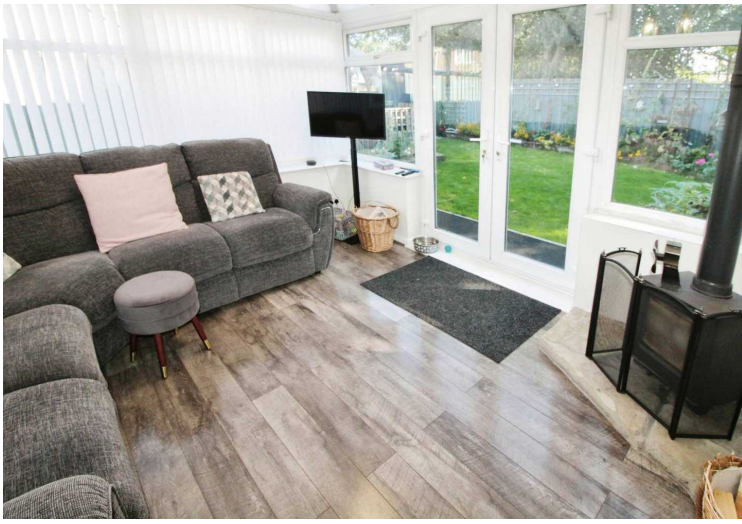
UPVC window the rear, radiator and fitted wardrobes.

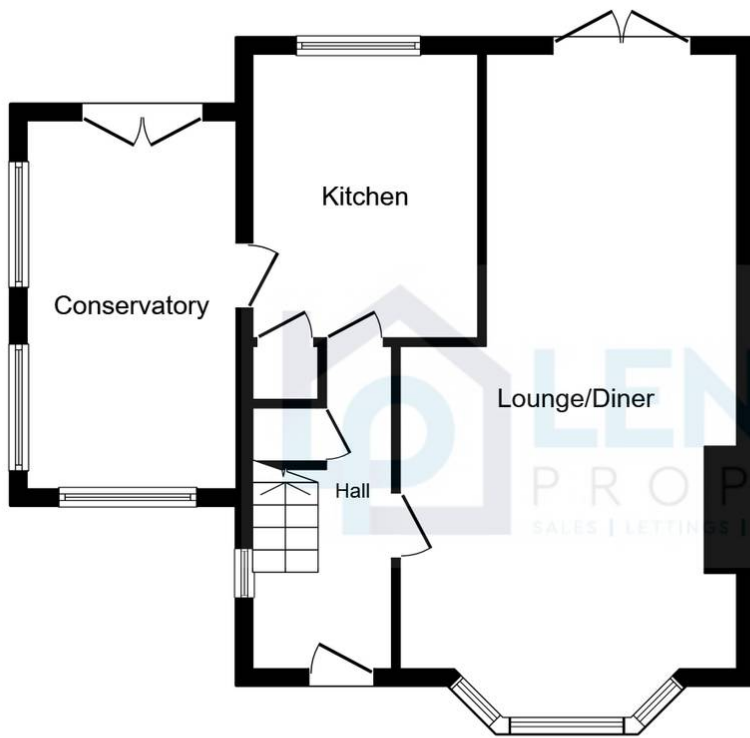
**Family bathroom**

7' 3" x 5' 5" (2.21m x 1.66m)

Frosted UPVC window to the rear, sink, low level W/C, panelled bath with over mains shower.

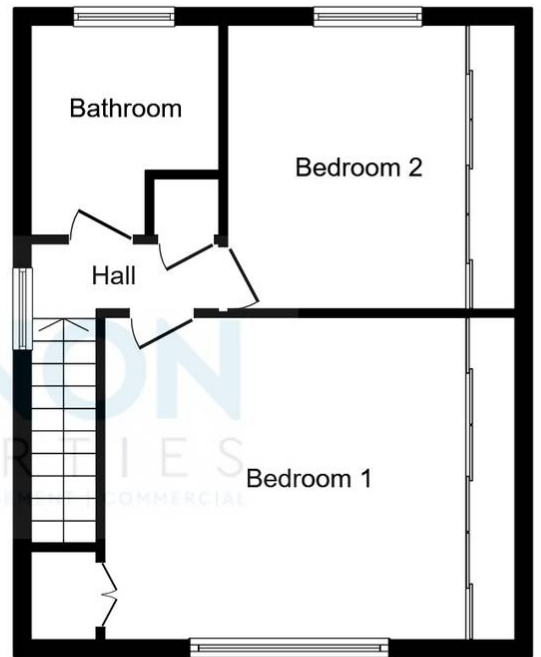






### Ground Floor

Floor area 58.1 m<sup>2</sup> (626 sq.ft.)



### First Floor

Floor area 44.4 m<sup>2</sup> (478 sq.ft.)

**TOTAL: 102.6 m<sup>2</sup> (1,104 sq.ft.)**

This floor plan is for illustrative purposes only. It is not drawn to scale. Any measurements, floor areas (including any total floor area), openings and orientations are approximate. No details are guaranteed, they cannot be relied upon for any purpose and do not form any part of any agreement. No liability is taken for any error, omission or misstatement. A party must rely upon its own inspection(s). Powered by [www.Propertybox.io](http://www.Propertybox.io)

