



## 54 Dunkeld Close, Blyth

£195,000 Freehold

We are delighted to present this charming two-bedroom semi-detached bungalow to the sales market, nestled in a quiet cul-de-sac within the highly popular South Beach estate, just a stone's throw from the idyllic Blyth Beach.

The property is conveniently located close to transport links and local amenities.

The accommodation briefly comprises a porch, study, lounge, kitchen/diner, bathroom, and two bedrooms. Externally, there is a low-maintenance front garden with a driveway providing ample off-street parking for two cars. To the rear, there is an enclosed garden, mainly laid to lawn. This property also benefits from having no upper chain. Viewings are highly recommended to fully appreciate everything this charming home has to offer.

**Porch**

UPVC door to the front, UPVC window to front and side, radiator and double doors to the lounge.

**Lounge**

16' 7" x 16' 0" (5.05m x 4.87m)

UPVC bow window to the front and radiator.

**Kitchen/diner**

14' 7" x 9' 8" (4.44m x 2.94m)

UPVC window to the rear, UPVC door to the rear, radiator, storage cupboard, wall and base units, combi boiler, gas hob, extractor, one and a half sink with mixer tap, plumbed for a washing machine, plumbed for a dishwasher, tiled splash backs, integral electric oven and grill.

**Bathroom**

10' 8" x 6' 0" (3.24m x 1.83m)

Low level W/C, vanity sink, vertical chrome towel warmer, extractor, loft access, storage cupboard, double mains shower.

**Bedroom one**

13' 3" x 9' 3" (4.04m x 2.81m)

UPVC window to the rear, radiator and fitted wardrobes.

**Study**

13' 11" x 7' 9" (4.25m x 2.36m)

UPVC window to the front, radiator, storage cupboard and stairs.

**Landing**

Velux window to the front and door to the bedroom.

**Dormer**

12' 4" x 7' 8" (3.76m x 2.34m)

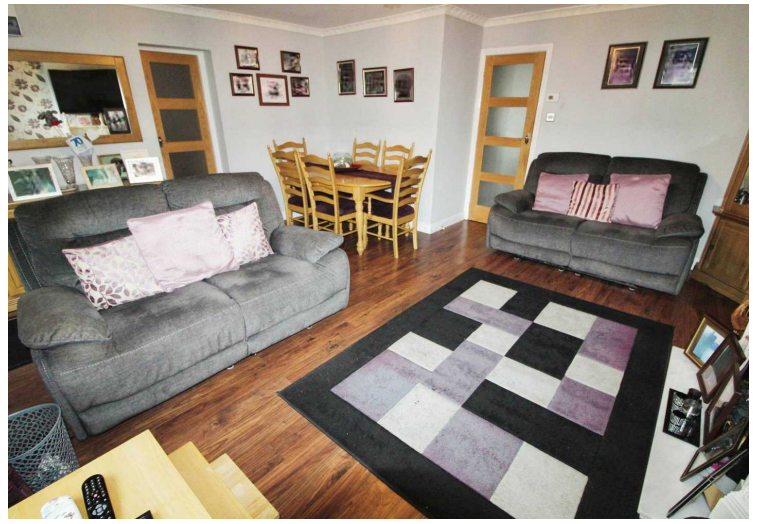
UPVC window to the rear, radiator and fitted cupboards.

**Lean-to**

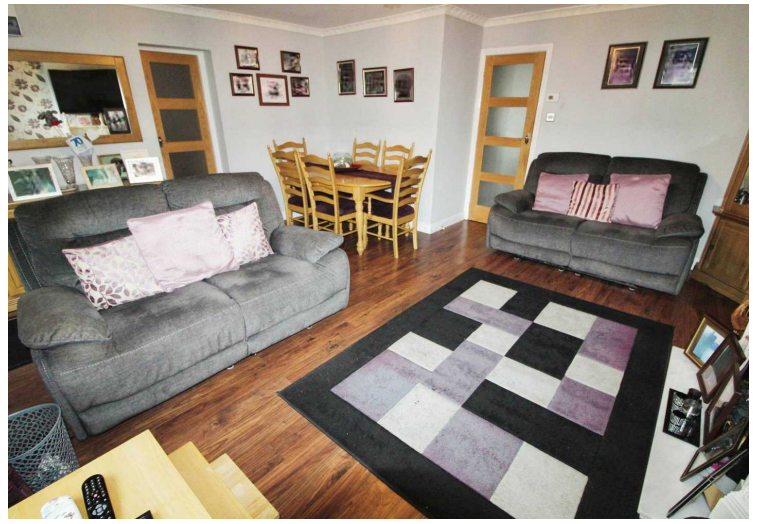
8' 1" x 3' 10" (2.47m x 1.17m)

UPVC window to rear and side, UPVC door to the side, plastic roof, radiator and power sockets.

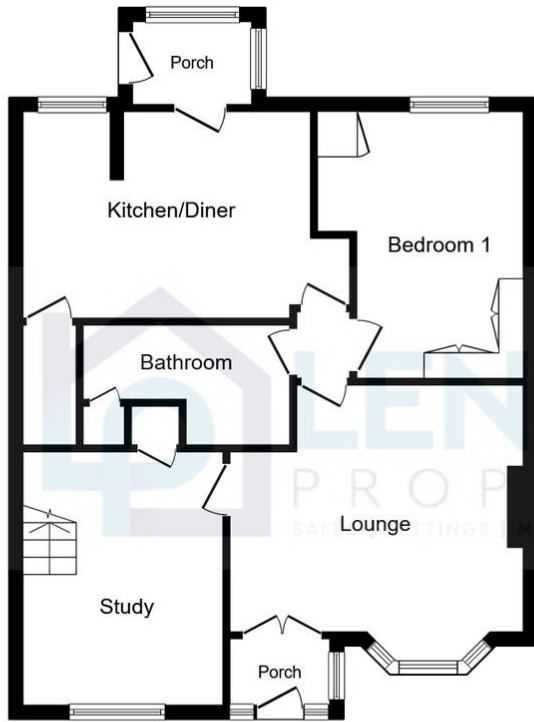






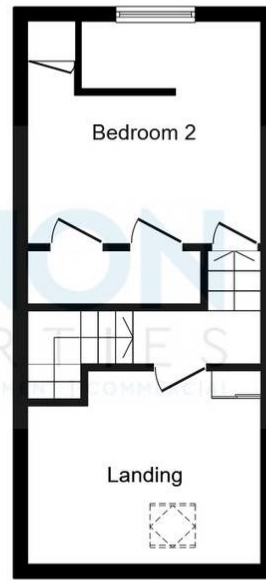






### Ground Floor

Floor area 66.6 m<sup>2</sup> (717 sq.ft.)



### First Floor

Floor area 28.5 m<sup>2</sup> (306 sq.ft.)

**TOTAL: 95.0 m<sup>2</sup> (1,023 sq.ft.)**

This floor plan is for illustrative purposes only. It is not drawn to scale. Any measurements, floor areas (including any total floor area), openings and orientations are approximate. No details are guaranteed, they cannot be relied upon for any purpose and do not form any part of any agreement. No liability is taken for any error, omission or misstatement. A party must rely upon its own inspection(s). Powered by [www.Propertybox.io](http://www.Propertybox.io)

