



## 473 Plessey Road, Blyth

£215,000 Freehold

Lennon Properties are delighted to present this immaculate three-bedroom semi-detached property to the market. Situated close to local transport links, amenities, and schools, this home is ideal for first-time buyers and growing families. The property briefly comprises a porch, hallway, lounge, kitchen/diner, utility room, downstairs W/C, and conservatory. On the first floor, there are three generously sized bedrooms and an impressive family bathroom. Externally, there is a paved driveway providing ample off-street parking and an enclosed rear garden.

Viewings are highly recommended to fully appreciate everything this property has to offer.

**Porch**

UPVC front door and UPVC door to the hallway.

**Hallway**

UPVC window to the front, radiator, stairs, spotlights, under stair cupboard access to the lounge and kitchen.

**Lounge**

14' 0" x 11' 5" (4.26m x 3.47m)

UPVC window to the front, radiator and feature fireplace.

**Kitchen/diner**

26' 8" x 11' 6" (8.13m x 3.51m)

UPVC window to the rear, stainless steel sink with mixer tap, wall and base units, gas range cooker, spotlights, integrated fridge and dishwasher. UPVC french doors to the rear, radiator, french doors to the conservatory.

**Utility**

10' 9" x 7' 3" (3.28m x 2.21m)

UPVC window to the front, radiator, roll top benches, wall and base units, spotlights, plumbed for a washing machine and dishwasher.

**Downstairs W/C**

4' 1" x 3' 8" (1.24m x 1.11m)

Low level W/C, sink and combi boiler.

**Conservatory**

11' 0" x 10' 6" (3.36m x 3.20m)

UPVC windows to three sides, UPVC french doors to the rear, power points, vertical white radiator, plastic roof and ceiling fan.

**Landing**

Frosted UPVC window to the side, access to the loft, three bedrooms and the family bathroom.

**Bedroom one**

12' 4" x 10' 8" (3.75m x 3.24m)

UPVC bay window to the front, radiator, fitted wardrobes and ceiling fan.

**Bedroom two**

10' 6" x 10' 7" (3.20m x 3.22m)

UPVC window to the rear, radiator and spotlights.

**Bedroom three**

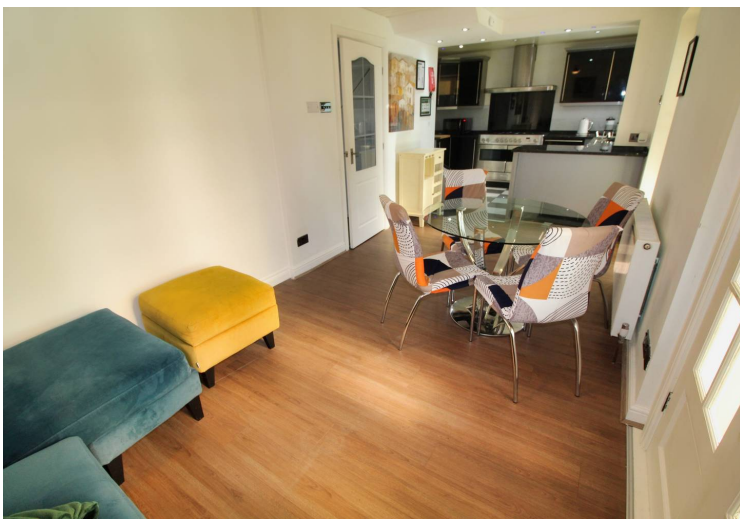
7' 7" x 6' 8" (2.31m x 2.04m)

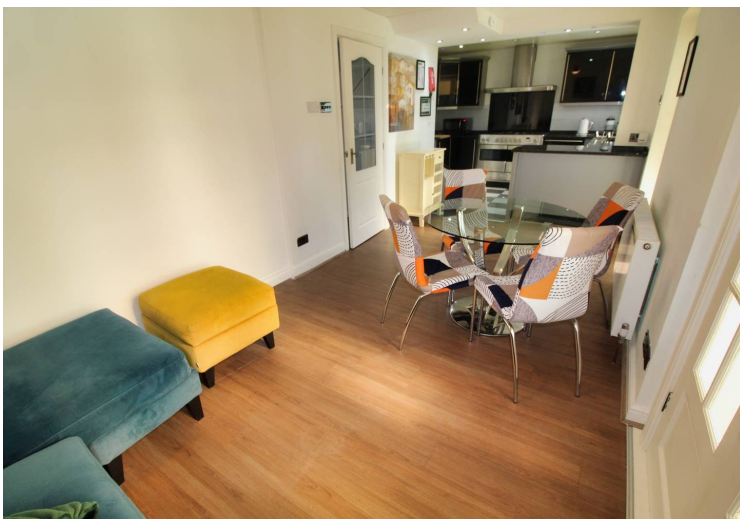
UPVC window to the front, radiator and spotlights.

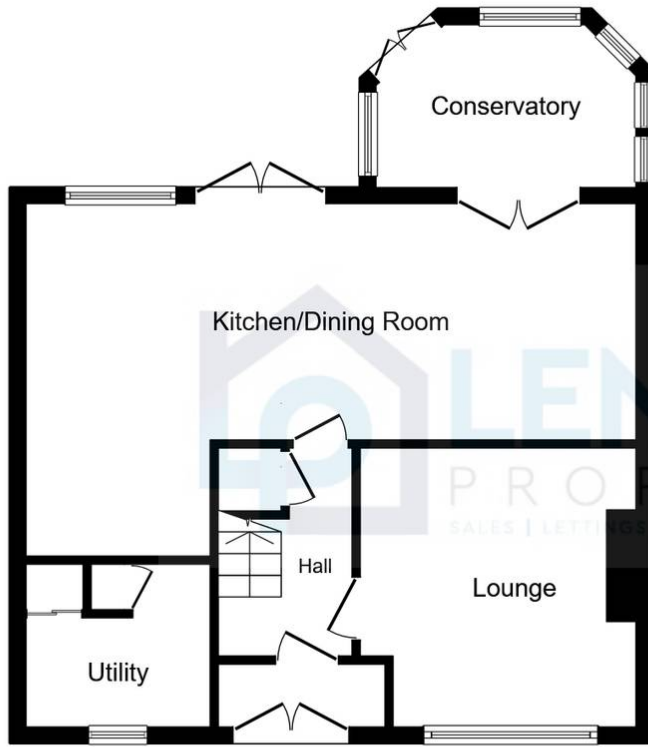
**Bathroom**

8' 2" x 5' 7" (2.48m x 1.69m)

Frosted UPVC window to the rear, vertical chrome towel warmer, low level W/C, vanity sink, spotlights, panelled bath with over mains shower.







### Ground Floor

Floor area 58.3 sq.m. (628 sq.ft.)



### First Floor

Floor area 35.2 sq.m. (379 sq.ft.)

**TOTAL: 93.5 sq.m. (1,007 sq.ft.)**

This floor plan is for illustrative purposes only. It is not drawn to scale. Any measurements, floor areas (including any total floor area), openings and orientations are approximate. No details are guaranteed, they cannot be relied upon for any purpose and do not form any part of any agreement. No liability is taken for any error, omission or misstatement. A party must rely upon its own inspection(s). Powered by [www.Propertybox.io](http://www.Propertybox.io)

