



1 Clover Way, Blyth

£244,999 Freehold

This impeccably presented three-bedroom detached family home is situated on a highly sought-after street within the Portland Wynd development. The property features a spacious hallway, a generous lounge with a bay window, a convenient downstairs cloakroom/WC, and a stunning kitchen/diner with French doors opening to the rear garden, along with an integral door to the garage.

On the first floor, there are three double bedrooms, with the primary bedroom benefiting from an en-suite, and a modern family bathroom. Externally, the property includes a front garden, a driveway providing off-street parking alongside a garage, and a sizable rear garden, perfect for outdoor entertaining. Due to the high demand for this property, prompt viewing is recommended

Hallway

Composite front door, radiator, stairs, with access to the downstairs W/C, lounge and kitchen/diner.

Lounge

17' 4" x 12' 6" (5.29m x 3.82m)

UPVC bay window to the front, radiator and storage cupboard.

Downstairs W/C

6' 7" x 3' 1" (2.00m x 0.95m)

Frosted UPVC to the side, low level W/C, sink, radiator and spotlights.

Kitchen/diner

12' 4" x 10' 2" (3.77m x 3.10m)

UPVC window to the rear, UPVC French doors to the rear, radiator, spotlights, one and a half stainless steel sink with mixer tap, gas hob, extractor hood, tiled splash backs, wall and base units, integral electric oven, fridge and freezer, plumbed for a washing machine, dishwasher and access to the garage.

Landing

UPVC window to the side, radiator, storage cupboard, access to the loft, family bathroom and the three bedrooms.

Bedroom one

14' 5" x 10' 5" (4.40m x 3.18m)

UPVC window to the front, radiator and fitted wardrobes.

En-suite

9' 3" x 3' 2" (2.82m x 0.96m)

Frosted UPVC window to the side, radiator, spotlights, extractor, mains shower.

Bedroom two

12' 0" x 10' 2" (3.67m x 3.09m)

UPVC window to the rear and radiator.

Bedroom three

10' 2" x 9' 3" (3.11m x 2.83m)

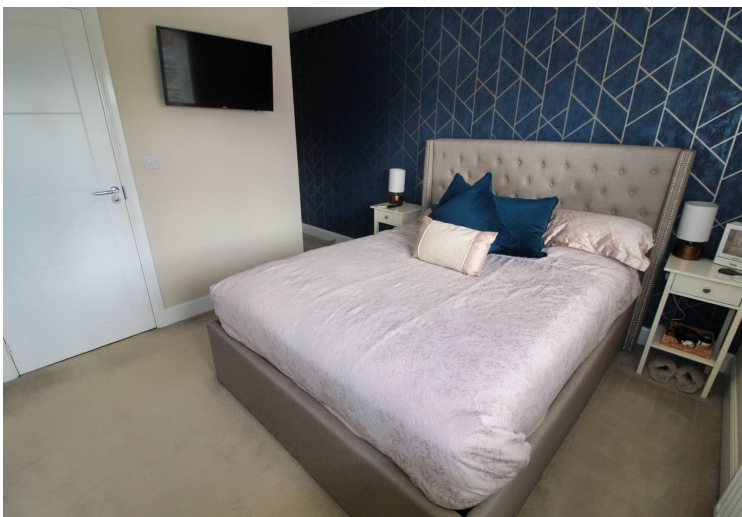
UPVC window to the rear and radiator.

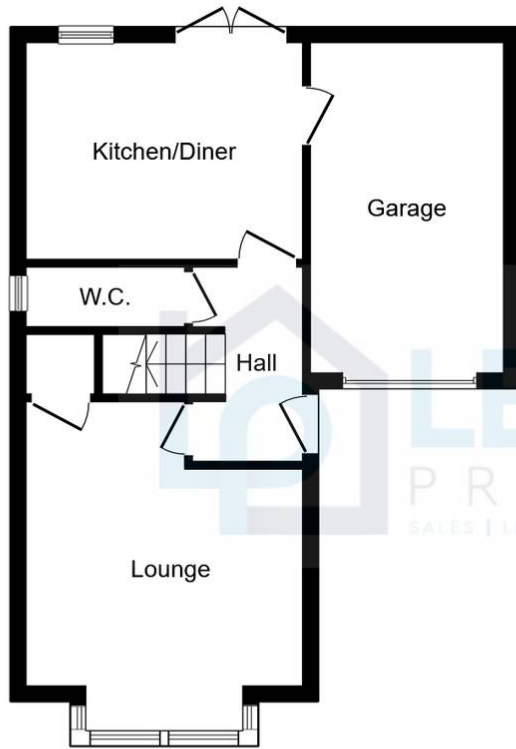
Family bathroom

8' 10" x 5' 7" (2.68m x 1.69m)

Frosted UPVC window to the front, radiator, low level W/C, sink, spotlights, extractor, panelled bath.







Ground Floor

Floor area 44.9 m² (484 sq.ft.)



First Floor

Floor area 44.4 m² (478 sq.ft.)

TOTAL: 89.4 m² (962 sq.ft.)

This floor plan is for illustrative purposes only. It is not drawn to scale. Any measurements, floor areas (including any total floor area), openings and orientations are approximate. No details are guaranteed, they cannot be relied upon for any purpose and do not form any part of any agreement. No liability is taken for any error, omission or misstatement. A party must rely upon its own inspection(s). Powered by www.Propertybox.io

