



16 Rothbury Avenue, Blyth

£149,950 Freehold

Lennon Properties are pleased to present this charming three-bedroom semi-detached home, situated in the highly sought-after area of Newsham Farm, nestled in a quiet cul-de-sac. The property is conveniently located close to local amenities, schools, and transport links.

The ground floor comprises a hallway, lounge/diner, kitchen, utility room, and conservatory. On the first floor, there are three generously sized bedrooms and a family bathroom.

Externally, the property features a front garden with a driveway leading to the garage, providing ample off-street parking. The rear garden is enclosed and benefits from both a paved area and a lawn.

Hallway

UPVC front door leading to the hallway, storage cupboard, stairs, access to the kitchen and lounge.

Lounge/diner

22' 11" x 12' 3" (6.99m x 3.74m)

UPVC bow window to the front, two radiators and UPVC patio doors to the rear.

Conservatory

11' 11" x 9' 0" (3.62m x 2.74m)

Plastic roof, ceiling fan, power points, UPVC windows to three sides and UPVC door to the side.

Kitchen

9' 8" x 8' 5" (2.95m x 2.56m)

UPVC window to the rear, radiator, gas hob, wall and base units, plumbed for a dishwasher, one and a half sink with mixer tap, electric oven, tiled splash backs, wooden effect rill top benches.

Utility room

7' 8" x 7' 7" (2.34m x 2.30m)

UPVC window to the rear, UPVC door to the rear, radiator, wall units, wooden effect roll top benches, wooden door to the garage and plumbed for a washing machine.

Landing

Frosted UPVC window to the side, combi boiler in a cupboard, access to the loft, family bathroom and the three bedrooms.

Bedroom one

11' 10" x 11' 1" (3.61m x 3.38m)

UPVC window to the front, radiator, and fitted wardrobes.

Bedroom two

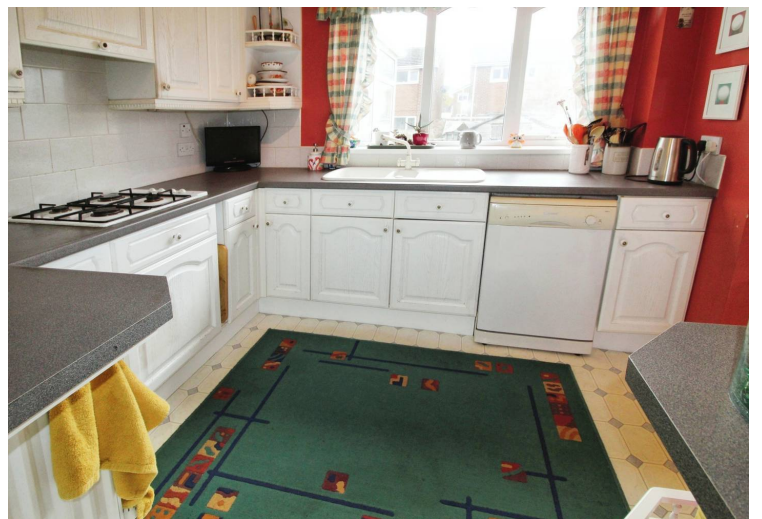
11' 11" x 8' 4" (3.62m x 2.53m)

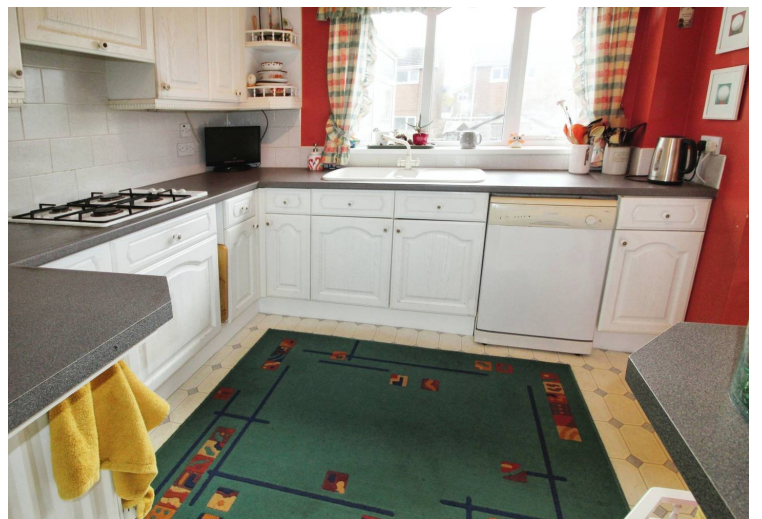
UPVC window to the rear, radiator and fitted wardrobes.

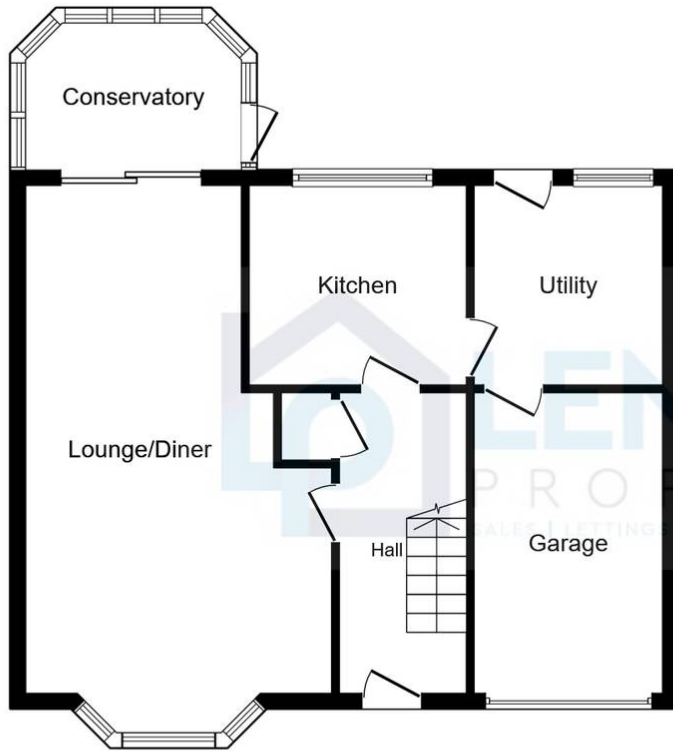
Bedroom three

8' 5" x 7' 10" (2.57m x 2.38m)

UPVC window to the front and radiator.

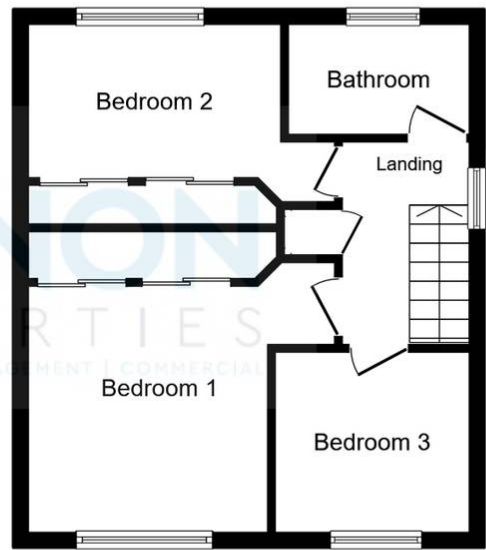






Ground Floor

Floor area 64.8 m² (698 sq.ft.)



First Floor

Floor area 40.0 m² (430 sq.ft.)

TOTAL: 104.8 m² (1,128 sq.ft.)

This floor plan is for illustrative purposes only. It is not drawn to scale. Any measurements, floor areas (including any total floor area), openings and orientations are approximate. No details are guaranteed, they cannot be relied upon for any purpose and do not form any part of any agreement. No liability is taken for any error, omission or misstatement. A party must rely upon its own inspection(s). Powered by www.Propertybox.io

