



## 6 Blackthorn Drive, Blyth

£285,000 Freehold

This stunning three bedroom detached family home comes to the sales market boasting a fabulous extension to the rear of the property making an ideal family breakfasting kitchen with bi folding doors to the rear garden, en suite to the main bedroom and a garage. Situated within the popular Blackthorn Drive Blyth the accommodation briefly comprises: Entrance, wc, lounge, kitchen family room, study and to the first floor, three double bedroom, the main with ensuite and a family bathroom/WC. Externally to the front of the property there is a good sized driveway leading to garage and to the rear an enclosed garden with lawn and block paving. Internal viewings are highly recommended to appreciate what this property has to offer.

**Entrance**

Via composite front door into the vestibule

**Hallway**

Stairs to first floor landing.

**Kitchen**

24' 7" x 10' 2" (7.50m x 3.09m)

Fitted with a range of wall and baser units to round edged work tops island with wine cooler, 11.2 stainless steel sink unit with mixer taps, electric hob, oven and grill with extractor over, plumbed for washing machine, plumber for dish washer, integrated microwave, spotlights to the ceiling.

**Extension / Family room**

15' 3" x 9' 5" (4.64m x 2.88m)

Spot lights to ceiling, Bi folding doors to rear garden, 2 Velux windows, two vertical radiators

**Study**

9' 2" x 8' 1" (2.79m x 2.46m)

French doors to the rear, spot lights to the ceiling.

**WC**

Low level wc, pedestal wash hand basin, radiator.

**Lounge**

13' 1" x 10' 9" (3.99m x 3.27m)

Radiator, double glazed bay window to the front

**First floor Landing**

Storage cupboard. loft access, double glazed window to the side

**Bedroom One**

17' 8" x 12' 7" (5.39m x 3.84m)

Two fitted wardrobes, radiator, double glazed window.

**Ensuite**

Vanity sink unit, low level wc, double shower cubical with mains shower, tiles wall, double glazed window and French doors.

**Bedroom Two**

11' 1" x 10' 9" (3.39m x 3.28m)

Fitted wardrobes, radiator, double glazed window

**Bedroom Three**

8' 11" x 8' 6" (2.73m x 2.59m)

Fitted wardrobes, radiator, double glazed window.

**Bathroom/WC**

Fitted with low level wc, vanity wash hand basin, panelled bath with shower over, tiled wall, spot lights to ceiling, radiator, double glazed window.

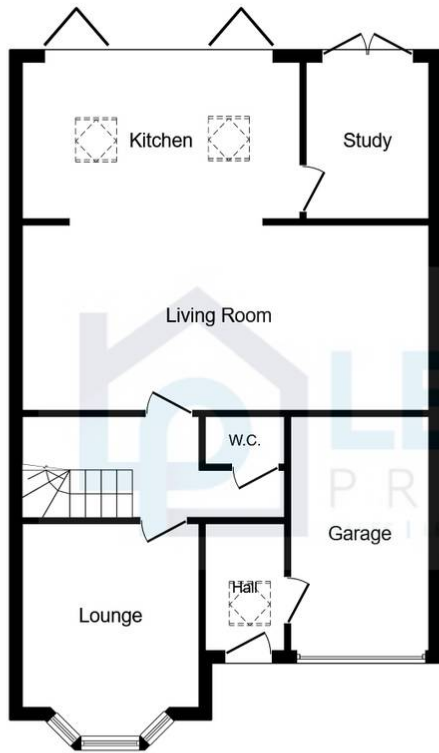






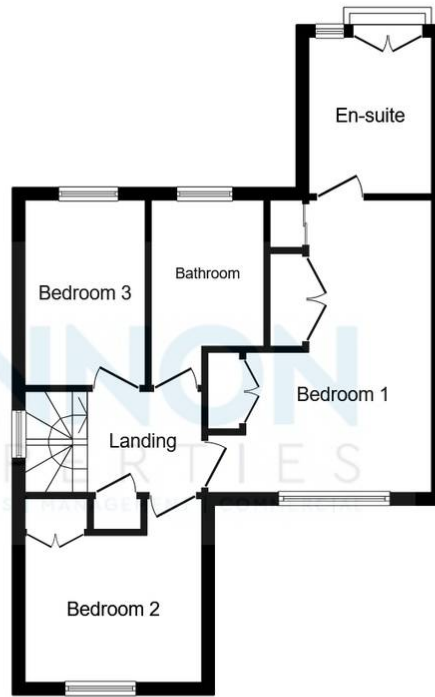






### Ground Floor

Floor area 71.1 sq.m. (766 sq.ft.)



### First Floor

Floor area 48.7 sq.m. (524 sq.ft.)

**TOTAL: 119.8 sq.m. (1,290 sq.ft.)**

This floor plan is for illustrative purposes only. It is not drawn to scale. Any measurements, floor areas (including any total floor area), openings and orientations are approximate. No details are guaranteed, they cannot be relied upon for any purpose and do not form any part of any agreement. No liability is taken for any error, omission or misstatement. A party must rely upon its own inspection(s). Powered by [www.Propertybox.io](http://www.Propertybox.io)

