



4 Pioneer Way, Blyth

£185,000 Freehold

Lennon Properties are delighted to bring this charming three bedroom semi-detached town house to the market, close to local amenities, transport links and the extremely popular Blyth Beach. The property briefly comprises of on the ground floor - hallway, lounge, kitchen and downstairs W/C. to the first floor there is two bedrooms and a family bathroom. To the second floor there is the primary bedroom benefiting from an en-suite. To the rear of the property there a driveway and garage providing plenty of off street parking. Viewings are highly recommend.

Hallway

Composite front, radiator, stairs and access to the lounge.

Lounge

13' 11" x 10' 3" (4.24m x 3.13m)

UPVC door to the front, radiator, spotlights and cupboard under the stairs.

Kitchen

13' 5" x 12' 4" (4.10m x 3.75m)

UPVC window to the rear, UPVC french doors to the rear, wall and base units, radiator, one and a half sink with mixer tap, electric hob, extractor hood, combi boiler, spotlights, integral fringe, freezer, microwave, oven and grill. Access to the down stairs W/C.

Downstairs W/C

6' 2" x 2' 10" (1.87m x 0.86m)

Frosted UPVC window to the side, radiator, sink, spotlights and low level W/C.

Landing

UPVC window to the side, spotlights, radiator, stairs to the top floor, access to the family bathroom and two bedrooms.

Bedroom two

11' 8" x 8' 6" (3.55m x 2.60m)

UPVC window to the rear, radiator, fitted wardrobes, spotlights and storage cupboard.

Bathroom

7' 0" x 6' 3" (2.14m x 1.90m)

Low level W/C, sink, vertical chrome radiator, spotlights and panelled bath.

Bedroom three

8' 11" x 7' 0" (2.72m x 2.13m)

UPVC window to the front and radiator.

Bedroom one

14' 10" x 13' 3" (4.51m x 4.04m)

UPVC window to the side, radiator and stairs, spotlights and access to the loft.

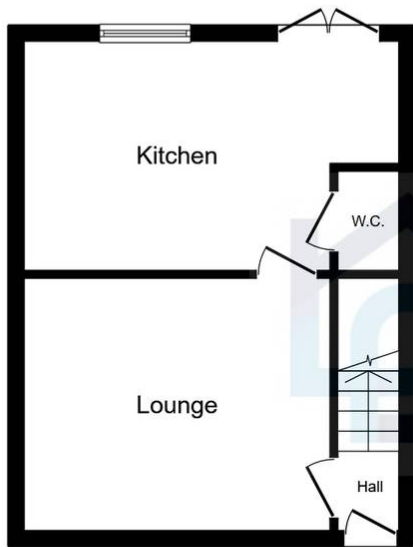
En-suite

6' 11" x 6' 0" (2.12m x 1.83m)

Velux window to the rear, vertical chrome towel warmer, low level W/C, sink, spotlights, extractor and electric shower.

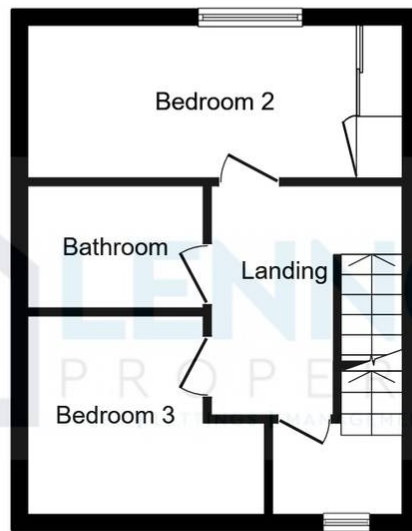






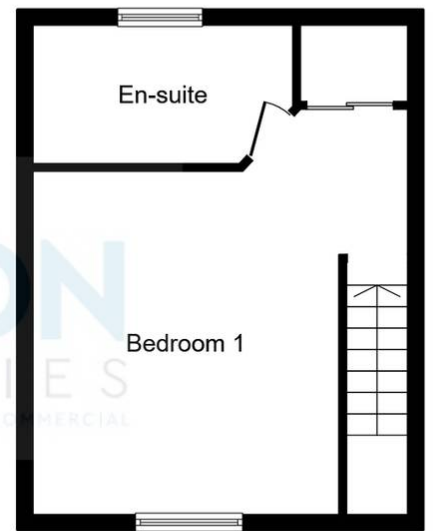
Ground Floor

Floor area 31.4 m² (338 sq.ft.)



First Floor

Floor area 31.4 m² (338 sq.ft.)



Second Floor

Floor area 31.4 m² (337 sq.ft.)

TOTAL: 94.1 m² (1,013 sq.ft.)

This floor plan is for illustrative purposes only. It is not drawn to scale. Any measurements, floor areas (including any total floor area), openings and orientations are approximate. No details are guaranteed, they cannot be relied upon for any purpose and do not form any part of any agreement. No liability is taken for any error, omission or misstatement. A party must rely upon its own inspection(s). Powered by www.Propertybox.io

