



Mayfield Close, Blyth

£295,000 Leasehold

We are delighted to bring to the sales market this immaculate detached family home, situated within North Farm development Blyth. The accommodation on offer briefly comprises : entrance hallway, cloaks/Wc, lounge, stunning kitchen/diner with integrated appliances . First floor, landing, four bedrooms with en-suite to main & family bathroom/WC. Externally there is Gardens front and rear and a driveway leading to a single garage. This property is located within the catchment area for local schools which includes Bede, and close proximity to the local beach. Amenities nearby include local shops, as well as transport links to surrounding areas including the soon to arrive Northumberland railway line. Internal Inspection is highly Recommended. Offered for sale with a 100% ownership.

Entrance

Via Composite front door.

Hallway

Stairs to first floor landing, single radiator, storage cupboard

WC

Low level WC, hand basin, single radiator.

Lounge

18' 8" x 13' 9" (5.70m x 4.18m)

Feature electric fire within media wall, two radiators, double glazed bay window to front.

Kitchen/diner

20' 10" x 13' 2" (6.34m x 4.01m)

Fitted with a range of wall and base units with co-ordinating roll edge work surfaces, breakfast bar, stainless steel sink unit and drainer with mixer tap, electric oven, gas hob, integrated fridge/freezer and dish washer, spotlights to ceiling, double glazed patio doors leading to rear garden, single radiator double glazed window to side.

First Floor Landing

Access to loft.

Bedroom One

15' 8" x 12' 3" (4.77m x 3.74m)

Double glazed to front, single radiator.

Ensuite

Low level WC, hand basin, double shower cubicle with mains shower, part tiling to walls, heated towel rail

Bedroom Two

11' 11" x 8' 10" (3.63m x 2.69m)

Radiator, double glazed window.

Bedroom Three

11' 11" x 8' 4" (3.63m x 2.54m)

Radiator, double glazed window.

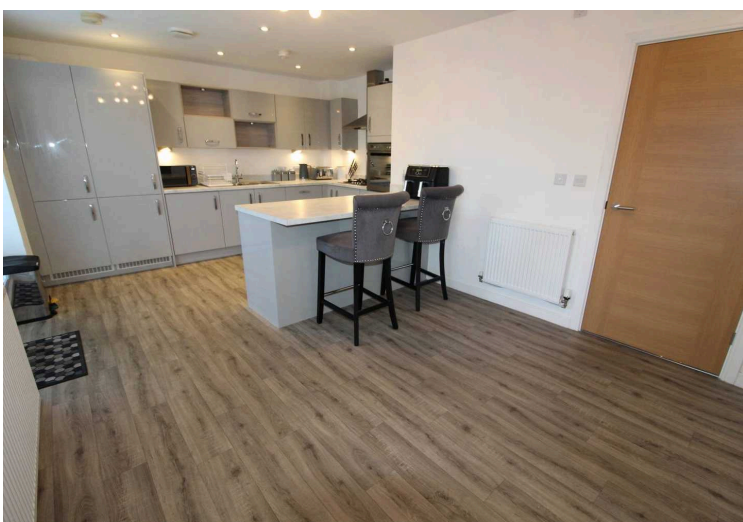
Bedroom Four

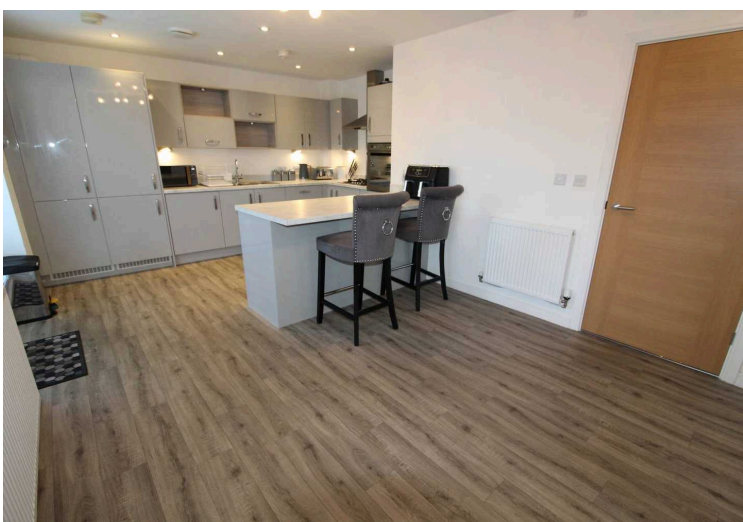
10' 7" x 8' 8" (3.22m x 2.64m)

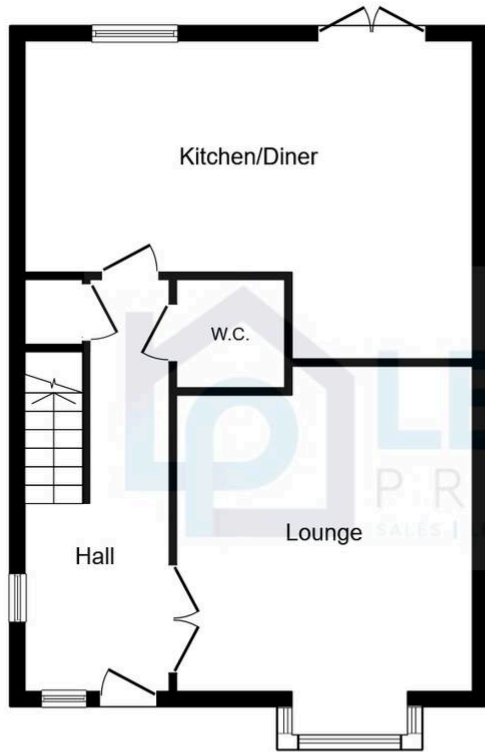
Radiator, double glazed window.

Bathroom/WC

Fitted with 3 piece suite comprising: Panelled bath, hand basin, low level WC, heated towel rail, part tiling to walls, spot lights to ceiling, double glazed window.

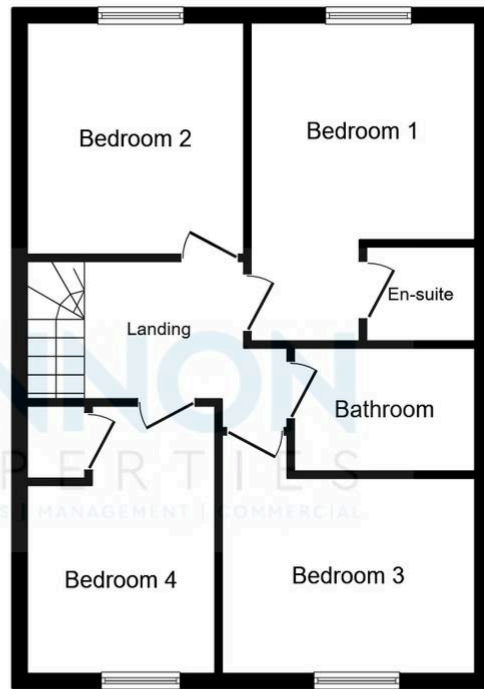






Ground Floor

Floor area 56.8 m² (611 sq.ft.)



First Floor

Floor area 55.8 m² (601 sq.ft.)

TOTAL: 112.6 m² (1,212 sq.ft.)

This floor plan is for illustrative purposes only. It is not drawn to scale. Any measurements, floor areas (including any total floor area), openings and orientations are approximate. No details are guaranteed; they cannot be relied upon for any purpose and do not form any part of any agreement. No liability is taken for any error, omission or misstatement. A party must rely upon its own inspection(s). Powered by www.Propertybox.io

You can include any text here. The text can be modified upon generating your brochure.



You can include any text here. The text can be modified upon generating your brochure.

