



## 5 Barnard Street, Blyth

£99,950 Freehold

This charming 3-bedroom mid-terraced house offers a wonderful opportunity for families and first-time buyers alike. Boasting a vestibule, spacious hallway and open plan lounge and diner, and modern kitchen. This property features three well-appointed bedrooms, and family bathroom. With a welcoming ambience, this home is located conveniently close to the town centre, local transport links, and reputable schools. The outside space of the property includes an enclosed rear yard with double gates, providing secure and convenient off-street parking.

**Vestibule**

UPVC door to the front and door to the hallway.

**Hallway**

Radiator, stairs and access to the diner.

**Lounge**

14' 10" x 12' 9" (4.53m x 3.89m)

UPVC window to the front and radiator.

**Diner**

13' 5" x 13' 0" (4.09m x 3.97m)

UPVC window to the rear, radiator and door to the kitchen.

**Kitchen**

11' 10" x 6' 9" (3.60m x 2.06m)

UPVC window to the side, UPVC door to the rear, stainless steel sink with mixer tap, radiator, wall and base units, combi boiler, tiled splash backs, wooden effect roll top benches, electric oven and hob, plumbed for a washing machine and storage cupboard.

**Landing**

UPVC window to the side, radiator and access to the loft, family bathroom and the three bedrooms.

**Bathroom**

6' 10" x 5' 6" (2.09m x 1.68m)

Frosted UPVC window to the rear, panelled bath, spotlights, low level W/C and sink.

**Bedroom one**

13' 6" x 12' 3" (4.11m x 3.73m)

UPVC window to the rear, radiator and storage cupboard.

**Bedroom two**

12' 9" x 11' 5" (3.89m x 3.48m)

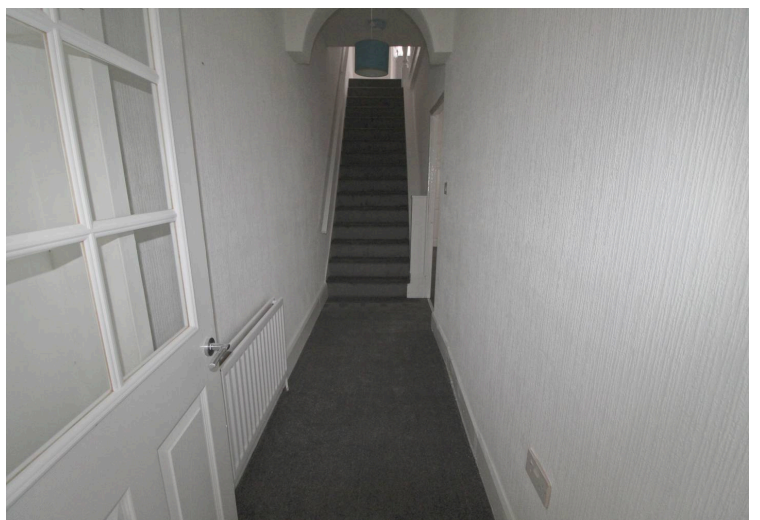
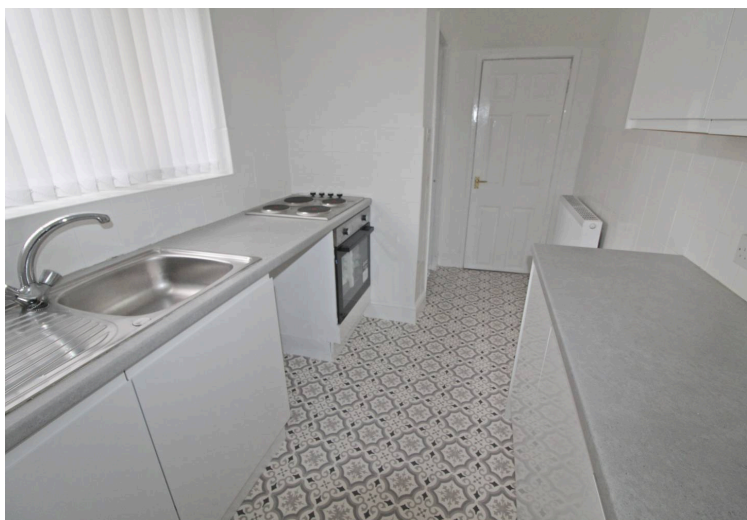
UPVC window to the front and radiator.

**Bedroom three**

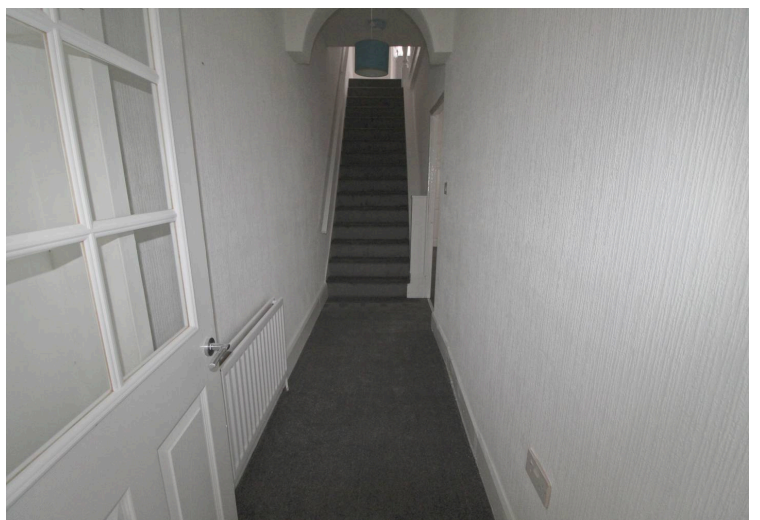
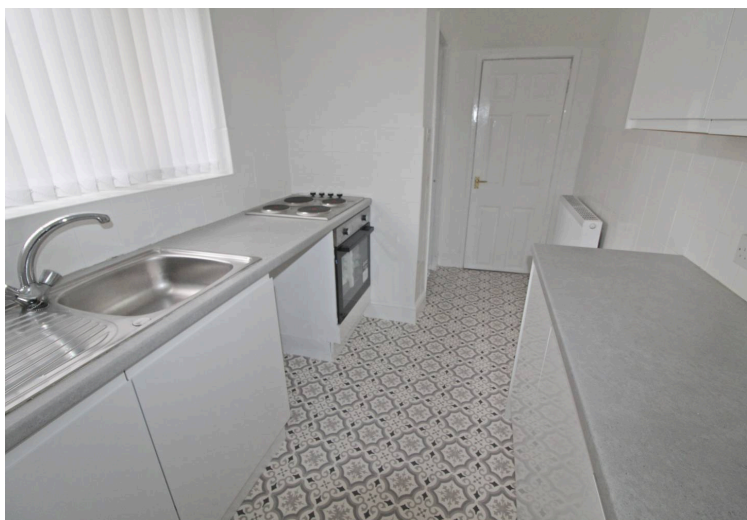
9' 1" x 7' 5" (2.77m x 2.25m)

UPVC window to the front and radiator.

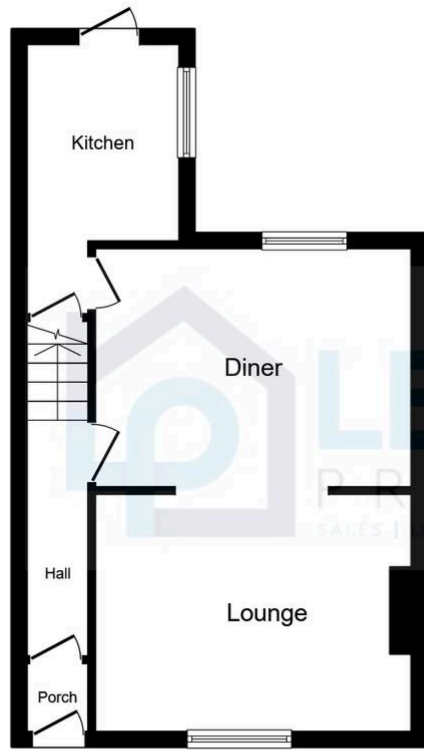












### Ground Floor

Floor area 37.5 m<sup>2</sup> (404 sq.ft.)



### First Floor

Floor area 37.5 m<sup>2</sup> (403 sq.ft.)

**TOTAL: 75.0 m<sup>2</sup> (807 sq.ft.)**

This floor plan is for illustrative purposes only. It is not drawn to scale. Any measurements, floor areas (including any total floor area), openings and orientations are approximate. No details are guaranteed; they cannot be relied upon for any purpose and do not form any part of any agreement. No liability is taken for any error, omission or misstatement. A party must rely upon its own inspection(s). Powered by [www.Propertybox.io](http://www.Propertybox.io)



