

Castle Terrace, Ashington

£65,000 Freehold

****FREEHOLD PAIR OF FLATS****

Great investment opportunity! 1 bedroom ground floor flat, currently vacant. Briefly comprises of vestibule, hallway, lounge, bedroom, rear hallway, kitchen, and bathroom. The upstairs flat is a two bedroom flats currently with tenant in situ, briefly comprises of hallway, landing, lounge, kitchen, bathroom and two bedrooms.

Vestibule

UPVC front door leading to hallway.

Hallway

Storage cupboard, access to the lounge and bedroom.

Bedroom

14' 6" x 14' 0" (4.42m x 4.27m)

UPVC window to the front, radiator and combi boiler.

Lounge

12' 6" x 12' 6" (3.81m x 3.81m)

UPVC window and radiator.

Kitchen

6' 10" x 6' 6" (2.09m x 1.99m)

UPVC window to the side, wall and base units, stainless steel sink with mixer tap, radiator, plumbed for a washing machine.

Rear hallway

UPVC door to the side, storage cupboard, access to the kitchen, bathroom and the shared rear yard.

Bathroom

6' 11" x 5' 5" (2.11m x 1.64m)

Frosted UPVC window to the side, radiator, low level W/C, mains shower cubicle and sink.

Hallway

UPVC front door leading to the stairs.

Landing

Access to lounge and both bedrooms.

Lounge

16' 2" x 12' 8" (4.92m x 3.86m)

UPVC window to the rear, storage cupboard and access to the kitchen.

Bedroom one

14' 2" x 10' 4" (4.31m x 3.14m)

UPVC window to the front and radiator.

Bedroom two

10' 10" x 7' 5" (3.31m x 2.26m)

UPVC window to the front and radiator.

Kitchen

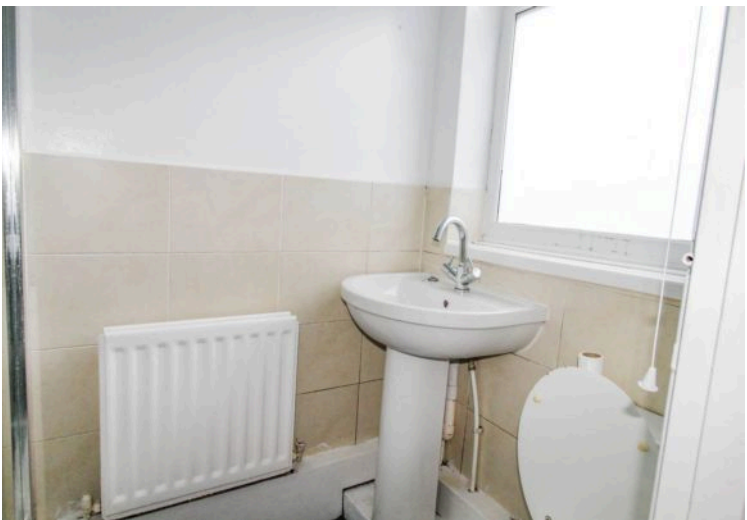
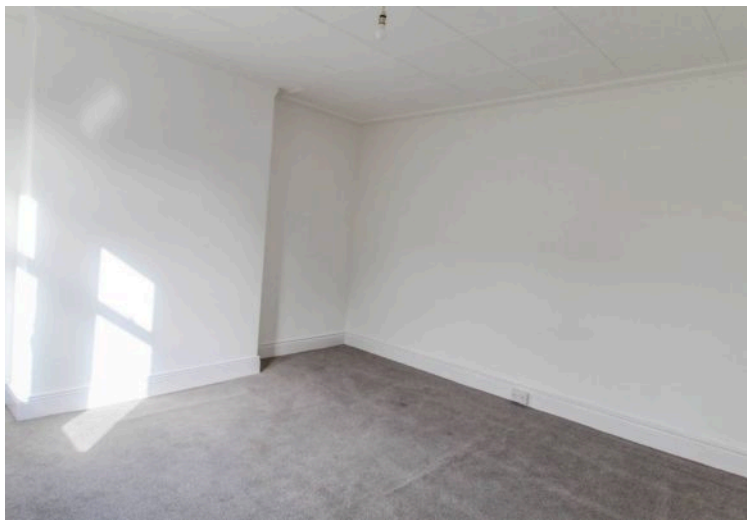
7' 1" x 6' 9" (2.17m x 2.07m)

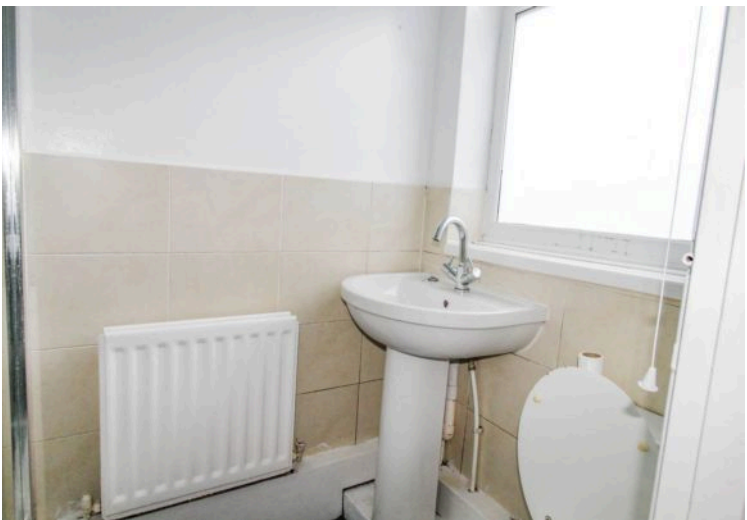
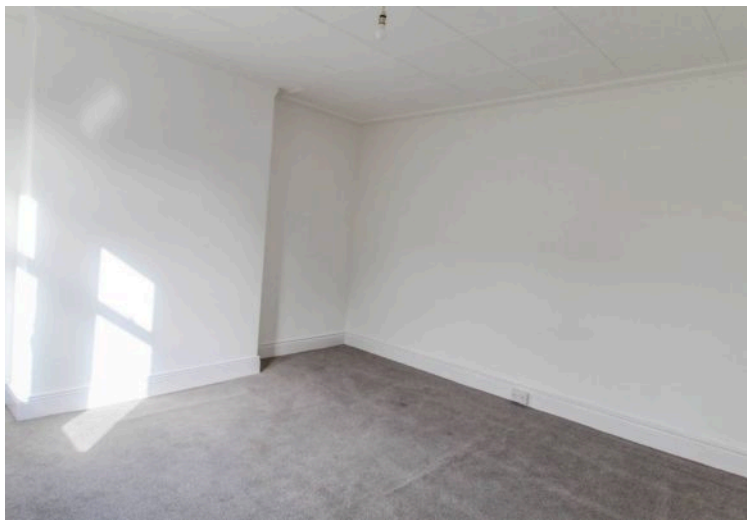
UPVC window to the side, wall and base units, stainless steel sink, plumbed for a washing machine and access to the bathroom.

Bathroom

6' 11" x 5' 5" (2.11m x 1.65m)

Frosted UPVC window to the side, low level W/C, sink, radiator and panelled bath.





You can include any text here. The text can be modified upon generating your brochure.



You can include any text here. The text can be modified upon generating your brochure.

