



79 Bolam Avenue, Blyth

£135,000 Freehold

Lennon properties are delighted to bring this charming three bedroom semi-detached home to the sales market in the very popular Bolam Avenue. Perfect for first time buyer's and growing families. The property briefly comprises of hallway, lounge, diner, kitchen and conservatory. To the first floor there are three bedrooms and a family bathroom.

To the exterior there are front and rear gardens with on street parking. This property is located close to local transport links, schools and local amenities making it an ideal location. Viewings are essential to appreciate everything this home has to offer.

Hallway

UPVC front door, radiator, stairs, cupboard under the stairs and access to the lounge.

Lounge

14' 0" x 12' 8" (4.26m x 3.86m)

UPVC bay window to the front, radiator and electric fire.

Diner

10' 11" x 9' 11" (3.32m x 3.01m)

UPVC patio doors to the rear and radiator.

Conservatory

8' 4" x 7' 3" (2.53m x 2.20m)

UPVC windows to three sides, UPVC french doors to the rear and plastic roof.

Kitchen

13' 11" x 8' 10" (4.23m x 2.70m)

UPVC bay window to the rear, one and a half sink with mixer tap, radiator, spotlights, wall and base units, gas hob, extractor fan, electric oven, plumbed for a washing machine and wooden door to the side.

Landing

Frosted UPVC window to the side, loft access, three bedrooms and bathroom.

Bedroom one

12' 0" x 11' 1" (3.66m x 3.37m)

UPVC window to the front and radiator.

Bedroom two

11' 1" x 11' 3" (3.38m x 3.43m)

UPVC window to the front and radiator.

Bedroom three

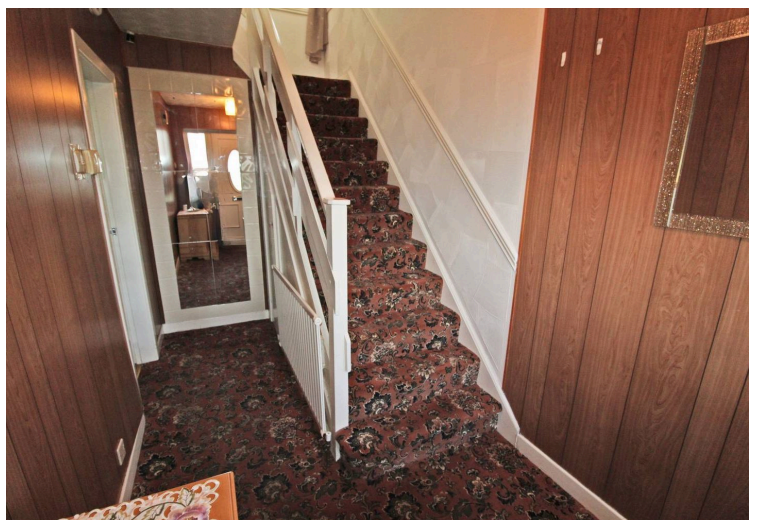
8' 10" x 8' 2" (2.70m x 2.48m)

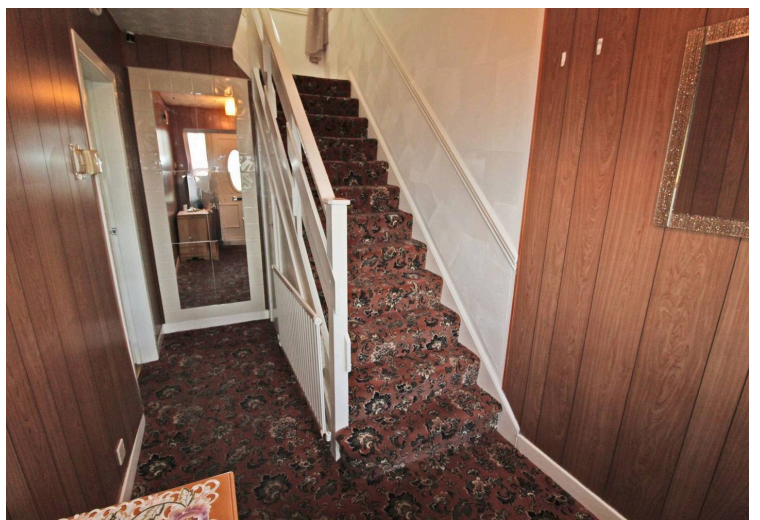
UPVC window to the front, radiator and storage cupboard.

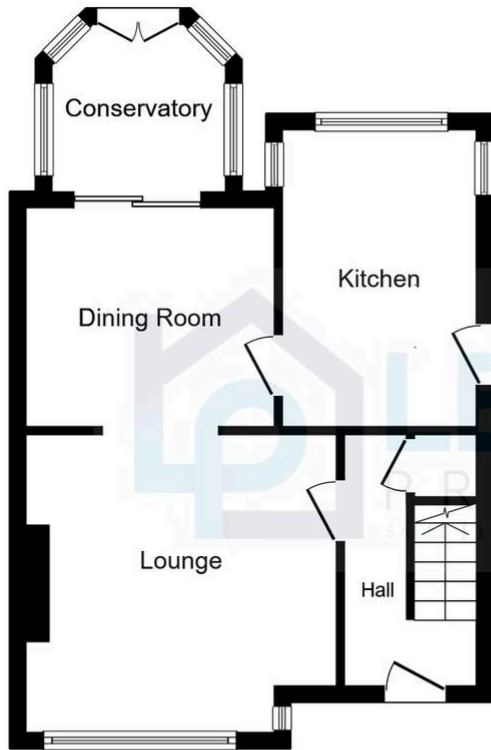
Bathroom

7' 11" x 8' 0" (2.42m x 2.43m)

Frosted UPVC windows to the rear and side, low level W/C, radiator, sink, panelled bath and combi boiler.

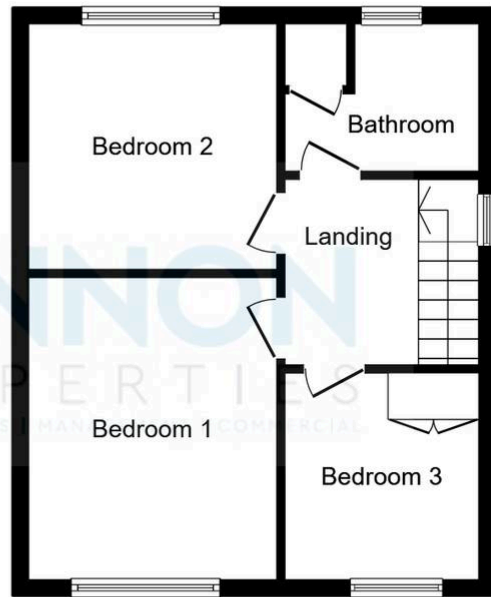






Ground Floor

Floor area 45.1 m² (485 sq.ft.)



First Floor

Floor area 41.5 m² (447 sq.ft.)

TOTAL: 86.6 m² (932 sq.ft.)

This floor plan is for illustrative purposes only. It is not drawn to scale. Any measurements, floor areas (including any total floor area), openings and orientations are approximate. No details are guaranteed; they cannot be relied upon for any purpose and do not form any part of any agreement. No liability is taken for any error, omission or misstatement. A party must rely upon its own inspection(s). Powered by www.Propertybox.io

