



## 66 Goschen Street, Blyth

£100,000 Freehold

Lennon Properties are delighted to bring this two bedroom semi-detached home to the sales market, conventionally located close to schools, transport links and local amenities making it perfect for any family. The property briefly comprises of hallway, lounge with a bay window flooding the room with natural light, modern kitchen, utility room, rear hallway, downstairs W/C and access to the snug. To the first floor there are two generous sized bedrooms and modern family bathroom. This property also benefits from a paved front garden that could be used for off street parking, to the rear there is an enclosed garden. Viewings are highly recommend to fully appreciate every thing this charming home has to offer.

**Hallway**

Composite front door, radiator, stairs and access to the lounge.

**Lounge**

15' 4" x 12' 8" (4.68m x 3.85m)

Double glazed bay window to the front and radiator.

**Kitchen**

11' 4" x 8' 7" (3.45m x 2.61m)

Double glazed window to the rear, sink with mixer tap, wall and base units, gas range cooker, extractor hood, wooden effect roll top benches, radiator and tiled splash backs.

**Utility room**

8' 4" x 4' 6" (2.53m x 1.38m)

Frosted double glazed window to the rear, plumbed for a washing machine, combi boiler and wooden effect roll top benches.

**Rear hallway**

Electric radiator, UPVC door to the rear, access to the snug and down stairs W/C.

**Downstairs W/C**

4' 5" x 2' 4" (1.35m x 0.70m)

Frosted single window to the rear and low level W/C.

**Snug**

14' 8" x 7' 6" (4.46m x 2.28m)

UPVC window to the front and electric radiator.

**Landing**

Double glazed window to the side, access to the loft, bathroom and both bedrooms.

**Bedroom one**

11' 8" x 13' 5" (3.55m x 4.10m)

Double glazed bay window to the front, radiator and fitted wardrobes.

**Bedroom two**

11' 2" x 8' 8" (3.41m x 2.63m)

Double glazed window to the rear, radiator and fitted wardrobes.

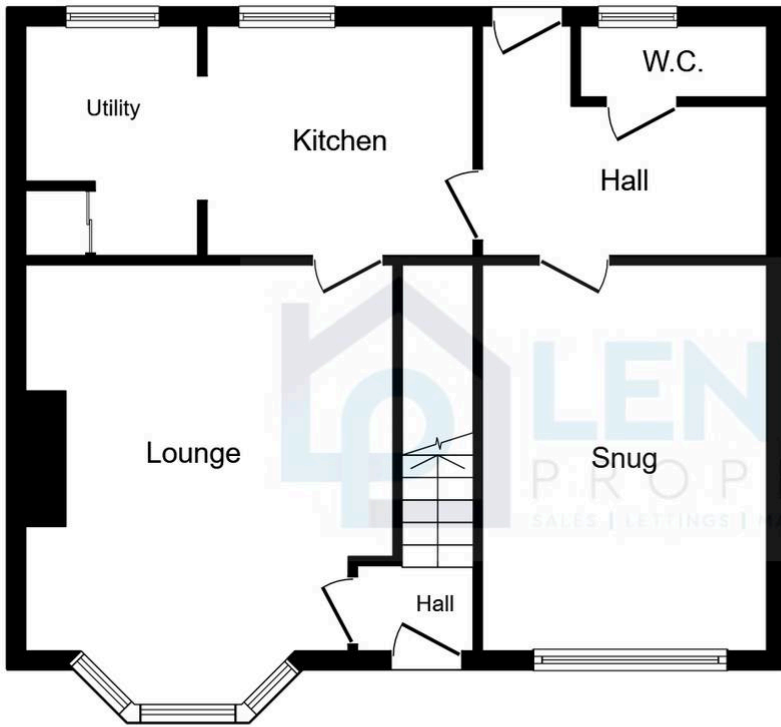
**Bathroom**

7' 3" x 7' 3" (2.22m x 2.21m)

Frosted double glazed window to the rear, panelled bath, sink low level W/C, vertical chrome towel warmer and double mains walk in shower.

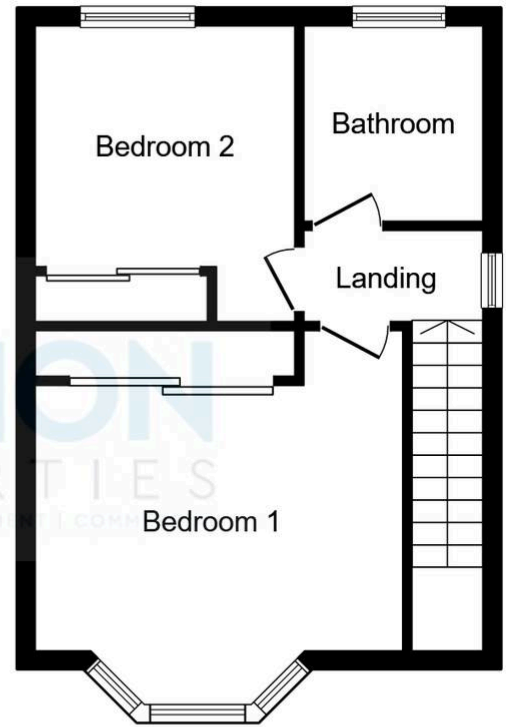






### Ground Floor

Floor area 59.5 sq.m. (640 sq.ft.)



### First Floor

Floor area 36.4 sq.m. (391 sq.ft.)

**TOTAL: 95.8 sq.m. (1,031 sq.ft.)**

This floor plan is for illustrative purposes only. It is not drawn to scale. Any measurements, floor areas (including any total floor area), openings and orientations are approximate. No details are guaranteed; they cannot be relied upon for any purpose and do not form any part of any agreement. No liability is taken for any error, omission or misstatement. A party must rely upon its own inspection(s). Powered by [www.Propertybox.io](http://www.Propertybox.io)

