



Horton Street, Blyth

£92,950 Freehold

This Spacious two bedroom end terrace house on Horton Street in Blyth is being sold with the benefit of no upper chain. Briefly comprising: hallway, lounge and kitchen. Two bedrooms to the first floor and family bathroom. An ideal first time buy/investment located close to schools and town centre amenities. Interest in this realistically priced house will be high, call now to arrange your viewing.

Entrance

Via double glazed front door.

Lounge

17' 1" x 13' 8" (5.21m x 4.17m)

Two radiators, double glazed window.

Kitchen

11' 11" x 5' 2" (3.64m x 1.58m)

Fitted with a range of wall and base units to round edged work tops, stainless steel sink with mixer taps, electric hob and oven radiator, double glazed window and door to rear.

Landing

Loft access, radiator.

Bedroom One

13' 3" x 12' 10" (4.04m x 3.91m)

Two radiators, double glazed window to front.

Bedroom Two

10' 8" x 6' 5" (3.24m x 1.95m)

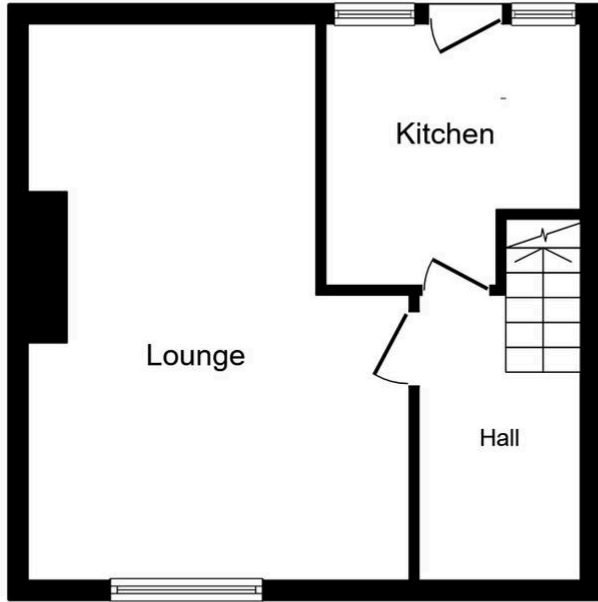
Radiator, double glazed window.

Bathroom/WC

Low level wc, pedestal wash hand basin, panelled bath with mains over, radiator, double glazed window.

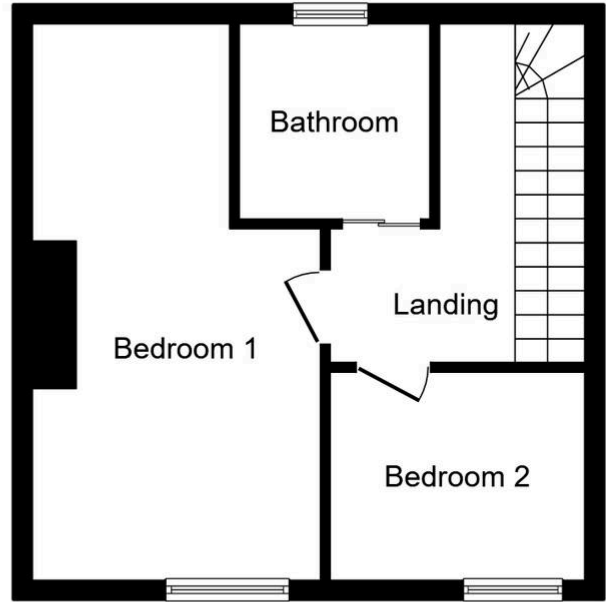






First Floor

Floor area 35.2 m² (379 sq.ft.)



Ground Floor

Floor area 35.2 m² (379 sq.ft.)

TOTAL: 70.5 m² (759 sq.ft.)

This floor plan is for illustrative purposes only. It is not drawn to scale. Any measurements, floor areas (including any total floor area), openings and orientations are approximate. No details are guaranteed, they cannot be relied upon for any purpose and do not form any part of any agreement. No liability is taken for any error, omission or misstatement. A party must rely upon its own inspection(s). Powered by www.Propertybox.io

