



Hadrian Road, Blyth

£245,000 Freehold

Lennon Properties are delighted to bring this, beautifully presented detached family home to the sales market, located on this highly regarded Hadrian Road in Woodlands Park. The property briefly comprises of hallway, generous sized lounge through dining room with patio doors to the rear that flood the room with natural light and modern kitchen with integrated appliances. To the first floor there is a modern family bathroom, and three double bedrooms all with fitted wardrobes and the primary bedroom benefiting from a contemporary En-suite. The property also benefits from well maintained front and rear gardens, garage and driveway. Viewings are highly recommended to fully appreciate this fabulous family home.

Hallway

UPVC front door, UPVC window to the front, radiator, stairs and access to the lounge.

Lounge/diner

21' 2" x 12' 6" (6.45m x 3.80m)

UPVC window to the front, UPVC patio doors to the rear, two radiators and cupboard under the stairs.

Kitchen

8' 9" x 9' 9" (2.67m x 2.96m)

UPVC window to the rear, sink with mixer tap, vertical anthracite radiator, wall and base units, electric hob and oven, extractor hood and integrated dishwasher.

Utility room

5' 8" x 5' 3" (1.73m x 1.60m)

UPVC door to the rear and plumbed for a washing machine.

Downstairs W/C

5' 3" x 2' 9" (1.59m x 0.84m)

Frosted UPVC window to the side, low level W/C, vanity sink and radiator.

Landing

Access to the three bedroom and bathroom.

Bedroom one

10' 11" x 10' 7" (3.32m x 3.22m)

UPVC window to the rear, radiator and fitted wardrobes.

En-suite

5' 6" x 5' 2" (1.68m x 1.57m)

Frosted UPVC window to the rear, low level W/C, vanity sink, mains shower, spotlights, extractor and vertical chrome towel warmer.

Bedroom two

12' 2" x 10' 7" (3.72m x 3.22m)

Two UPVC windows to the front, radiator, fitted wardrobes and loft access.

Bedroom three

9' 2" x 9' 1" (2.79m x 2.77m)

UPVC window to the front, radiator and fitted wardrobes.

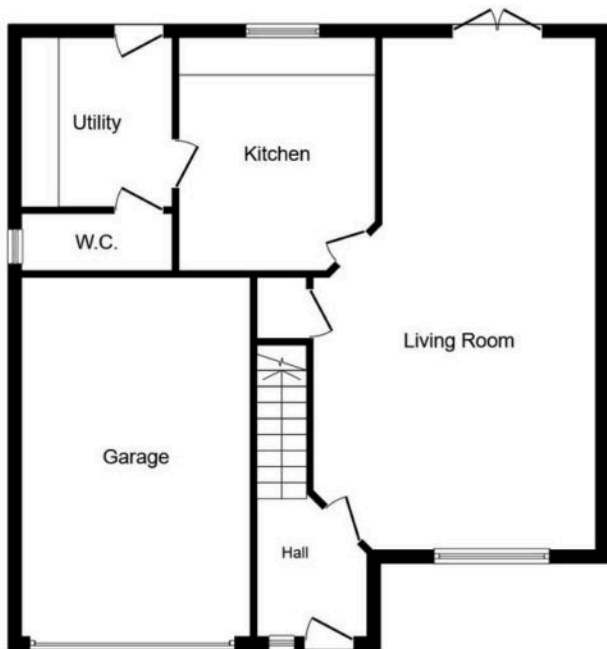
Family bathroom

8' 3" x 5' 7" (2.51m x 1.71m)

Frosted UPVC window to the rear, low level W/C, vanity sink, panelled bath, vertical chrome towel warmer and extractor.

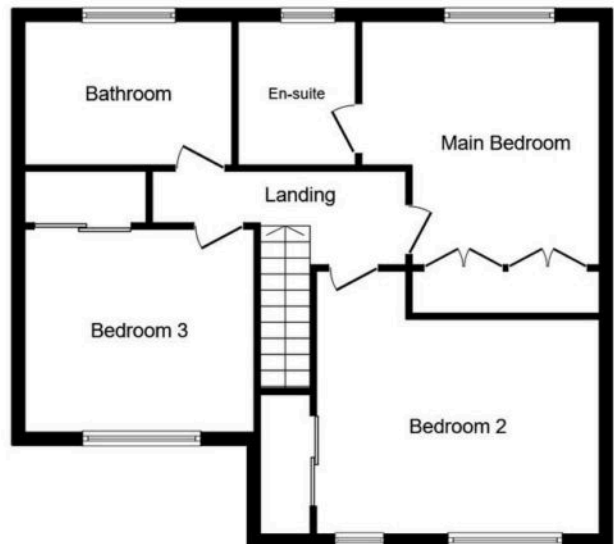






Ground Floor

Floor area 83.3 sq.m. (897 sq.ft.)



First Floor

Floor area 69.4 sq.m. (747 sq.ft.)

TOTAL: 152.7 sq.m. (1,644 sq.ft.)

This floor plan is for illustrative purposes only. It is not drawn to scale. Any measurements, floor areas (including any total floor area), openings and orientations are approximate. No details are guaranteed, they cannot be relied upon for any purpose and do not form any part of any agreement. No liability is taken for any error, omission or misstatement. A party must rely upon its own inspection(s). Powered by www.Propertybox.io

