



## 3 Thorntree Way, Blyth

£200,000 Leasehold

This spacious and well presented three bedroom semi detached family home, Located on this sought after and established development close to Asda and major road links. Favourably positioned on a corner plot with the benefit of a double garage with the accommodation briefly comprises: Entrance hall, generous lounge through diner, conservatory, kitchen, utility room. To the first floor you have three bedrooms and family bathroom. Externally you have small lawn garden to the front with double driveway for multi cars leading to double garage. A beautiful enclosed rear garden perfect for those alfresco evening, that is mainly blocked paved with artificial lawn. Interest in this property will be high call or email to arrange your viewing. The property is currently leasehold but will be freehold upon completion.

**Entrance**

Via double glazed front door.

**Hallway**

Stairs to first floor landing, radiator.

**Kitchen**

9' 8" x 7' 10" (2.95m x 2.40m)

Fitted with a range of wall and base units to round edged work tops, electric oven and hob with extractor over, 1 1/2 sink unit, tiled splash backs, plumbed for dishwasher, integrated fridge, radiator, double glazed window to rear.

**utility room**

10' 1" x 5' 9" (3.07m x 1.74m)

Fitted with wall and base units, work tops, plumbed for washing machine. combi boiler.

**Lounge**

15' 5" x 12' 7" (4.70m x 3.83m)

Two radiator, understairs cupboard, double glazed bow window to the front.

**Dining Room**

9' 6" x 7' 7" (2.89m x 2.30m)

Radiator, double glazed patio doors to rear,

**conservatory**

8' 4" x 8' 2" (2.53m x 2.49m)

Double glazed windows to side and rear, power points.

**Landing**

Loft access, double glazed window to side.

**Bedroom One**

14' 0" x 9' 5" (4.26m x 2.88m)

Fitted wardrobes, radiator, double glazed window to the front

**Bedroom Two**

11' 8" x 9' 5" (3.56m x 2.88m)

Radiator, double glazed window.

**Bedroom Three**

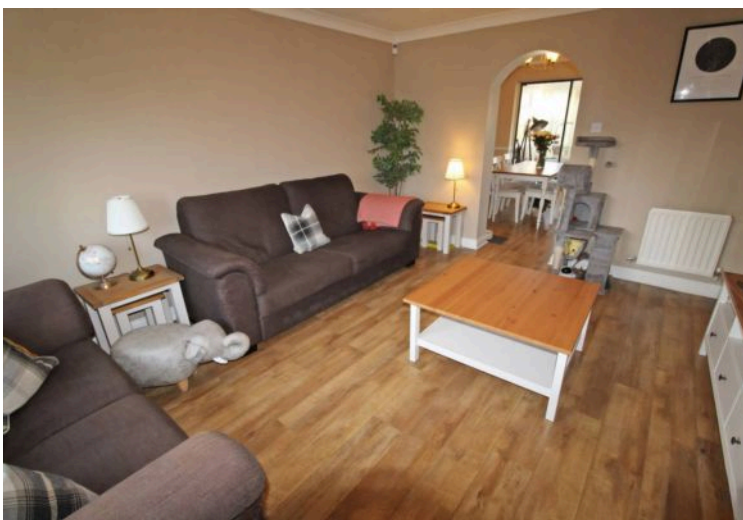
8' 6" x 6' 8" (2.59m x 2.02m)

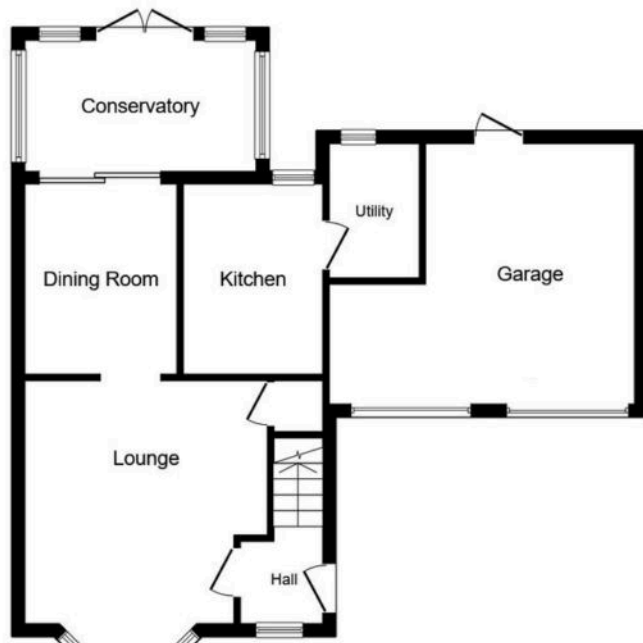
Radiator, double glazed window.

**Bathroom/WC**

Fitted with a three piece suite in white comprising: low level wc, pedestal wash hand basin, panelled bath with electric shower over, storage cupboard,, radiator, double glazed window.

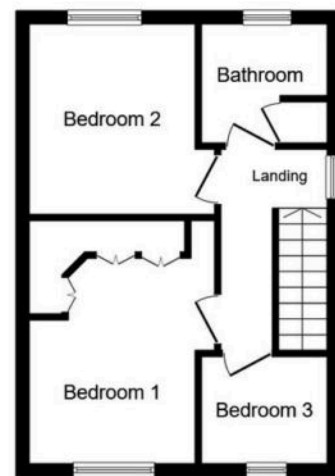






### Ground Floor

Floor area 63.9 m<sup>2</sup> (688 sq.ft.)



### First Floor

Floor area 33.7 m<sup>2</sup> (363 sq.ft.)

**TOTAL: 97.6 m<sup>2</sup> (1,050 sq.ft.)**

This floor plan is for illustrative purposes only. It is not drawn to scale. Any measurements, floor areas (including any total floor area), openings and orientations are approximate. No details are guaranteed, they cannot be relied upon for any purpose and do not form any part of any agreement. No liability is taken for any error, omission or misstatement. A party must rely upon its own inspection(s). Powered by [www.Propertybox.io](http://www.Propertybox.io)

