

Devonworth Place, Blyth

£145,000 Freehold

This stunning three bedroom semi detached house comes to the sale market, situated on the sought after Devonworth Place in Blyth. The current owners have this property presented to a very high standard offering a perfect blend of modern style and comfort making this an ideal family home, The property accommodation briefly comprises: entrance hall, lounge/diner, kitchen, utility room and WC. Three bedrooms to the first floor and gorgeous bathroom W.C. Externally there is a small garden to the front and to the rear a enclosed garden perfect for those alfresco evenings We anticipate an extremely high level of viewings on this ideal family home. Interest in this property will be high call or email to arrange your viewing.

Entrance

Via composite front door.

Hallway

Radiator, stairs to first floor landing, understairs cupboard.

Lounge/Diner

25' 9" x 12' 8" (7.85m x 3.86m)

Feature fire place with gas fire, radiator, double glazed window to the front and double glazed windows and door to rear.

Kitchen

13' 11" x 8' 11" (4.23m x 2.72m)

Fitted with a range of wall and base units to round edged work tops, sink unit with mixer taps, tiled splash backs, electric induction hob with with extractor over, double oven, integrated dishwasher, fridge freezer, double glazed window and door to side and rear.

Utility Room

14' 11" x 5' 10" (4.56m x 1.78m)

Combi boiler, storage cupboard, double glazed door and window.

WC

Low level wc, pedestal wash hand basin, window to the side.

First Floor Landing

Loft access, double glazed window to side.

Bedroom One

12' 1" x 10' 11" (3.69m x 3.32m)

Radiator, double glazed window.

Bedroom Two

11' 1" x 9' 0" (3.38m x 2.75m)

Two fitted wardrobes, radiator, double glazed window

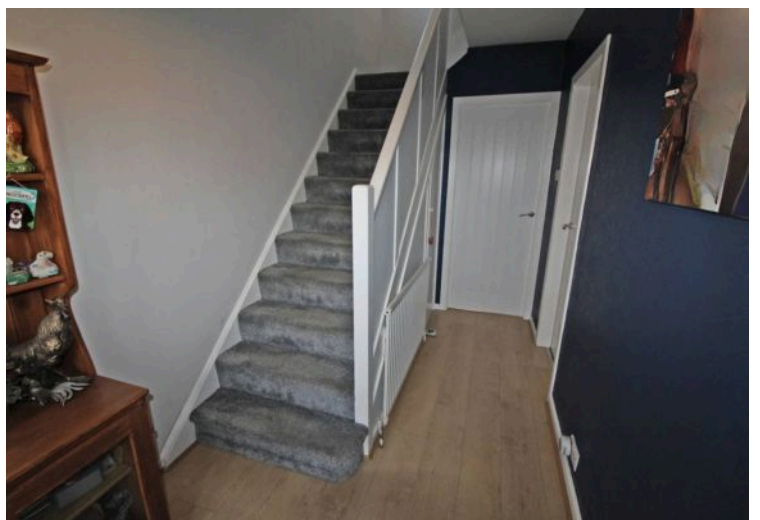
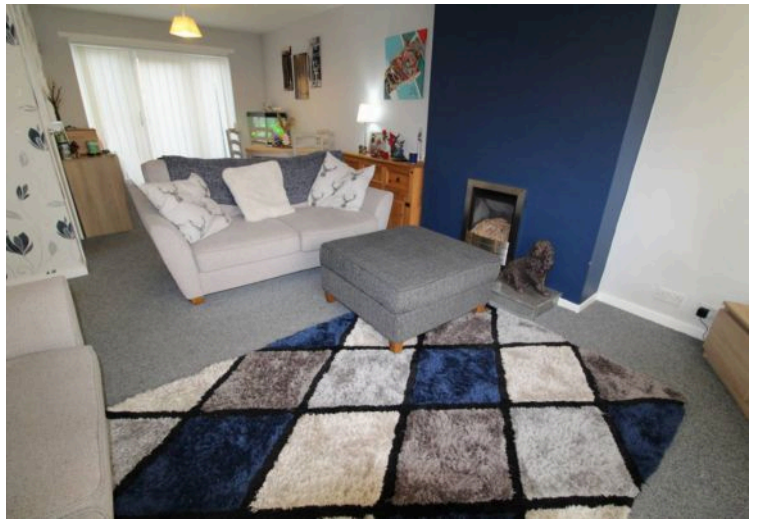
Bedroom Three

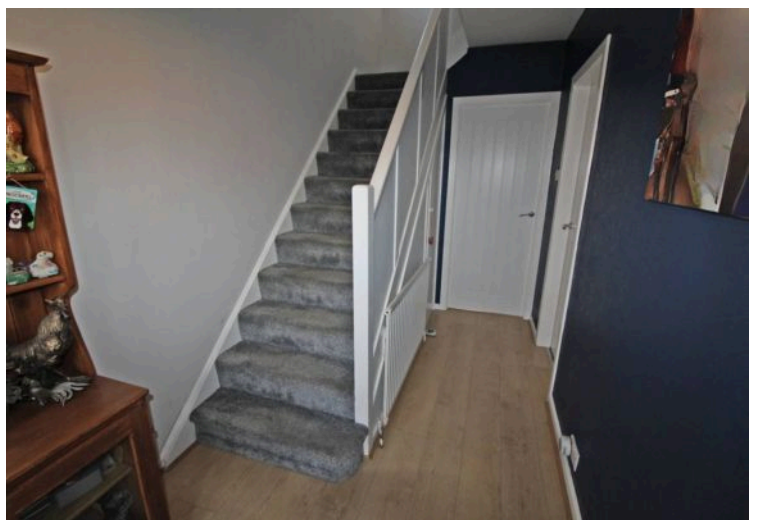
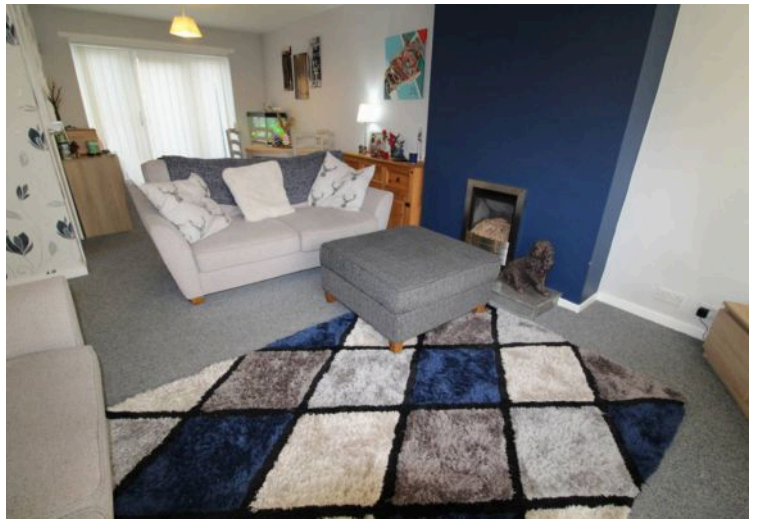
8' 3" x 8' 2" (2.52m x 2.49m)

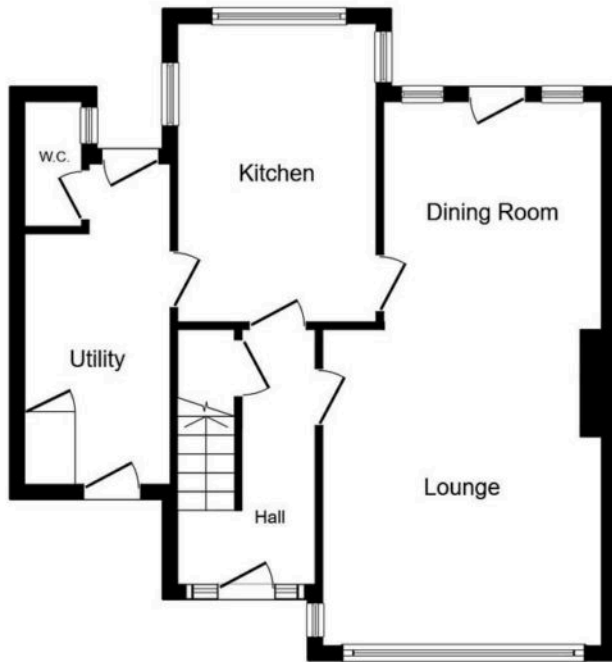
Storage cupboard, double glazed window.

Bathroom/WC

Low level wc, pedestal wash hand basin, panelled bath with electric shower over, storage cupboard, double glazed window.

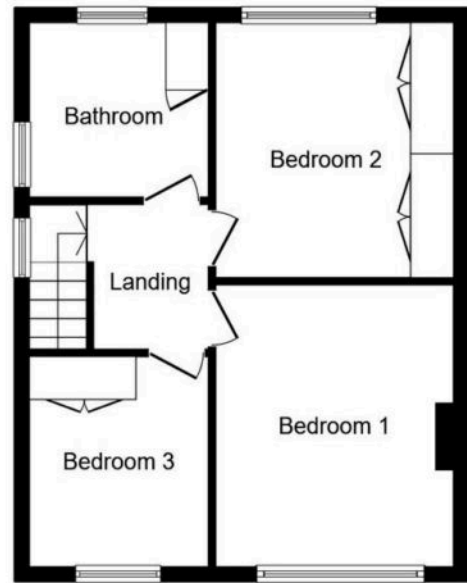






Ground Floor

Floor area 56.6 m² (609 sq.ft.)



First Floor

Floor area 45.0 m² (485 sq.ft.)

TOTAL: 101.7 m² (1,094 sq.ft.)

This floor plan is for illustrative purposes only. It is not drawn to scale. Any measurements, floor areas (including any total floor area), openings and orientations are approximate. No details are guaranteed, they cannot be relied upon for any purpose and do not form any part of any agreement. No liability is taken for any error, omission or misstatement. A party must rely upon its own inspection(s). Powered by www.Propertybox.io

