



## Twentieth Avenue, Blyth

£120,000 Freehold

This modernized three-bedroom house is situated on a popular area of Twentieth Avenue Blyth, offering easy access to local amenities, schools, and the beautiful Northumbria coastline. A perfect blend of contemporary style and everyday convenience, this property is ideal for families and professionals alike. The Accommodation on offer briefly comprises a welcoming entrance hallway leading to a spacious lounge, breakfasting kitchen, bathroom/WC, To the first floor, you'll find three generous bedrooms. Externally the property boasts an enclosed garden, ideal for outdoor entertaining or relaxing in the sun. A low maintenance garden at the front with off-street parking for added convenience. This property is sure to generate significant interest, making it an ideal choice for first-time buyers, families, or anyone seeking a stylish, move-in ready home. Don't miss out—contact us today to arrange your viewing!

**Entrance**

Via double glazed door.

**Hallway**

Radiator, stairs to first floor landing.

**Dining Kitchen**

13' 11" x 11' 0" (4.24m x 3.35m)

Fitted with a range of base units to round edged work tops, stainless steel sink unit with mixer taps, electric cooker, plumbed for washing machine., radiator, double glazed window and door to rear.

**Lounge**

13' 4" x 11' 11" (4.06m x 3.64m)

Understairs cupboard, radiator, double glazed window to front.

**Bathroom/WC**

Low level wc, pedestal wash hand basin, panelled kidney shaped bath, radiator, double glazed window.

**First Floor Landing**

Double glazed window to side.

**Bedroom One**

13' 5" x 9' 10" (4.10m x 3.00m)

Two storage cupboards, radiator, double glazed window.

**Bedroom Two**

10' 3" x 9' 9" (3.13m x 2.96m)

Radiator, double glazed window.

**Bedroom Three**

7' 3" x 6' 6" (2.20m x 1.99m)

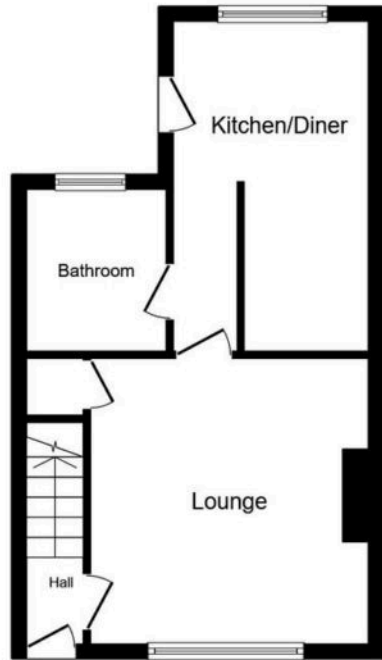
Radiator, double glazed window.











### Ground Floor

Floor area 37.2 sq.m. (401 sq.ft.)



### First Floor

Floor area 30.7 sq.m. (331 sq.ft.)

**TOTAL: 68.0 sq.m. (732 sq.ft.)**

This floor plan is for illustrative purposes only. It is not drawn to scale. Any measurements, floor areas (including any total floor area), openings and orientations are approximate. No details are guaranteed, they cannot be relied upon for any purpose and do not form any part of any agreement. No liability is taken for any error, omission or misstatement. A party must rely upon its own inspection(s). Powered by [www.Propertybox.io](http://www.Propertybox.io)

You can include any text here. The text can be modified upon generating your brochure.



You can include any text here. The text can be modified upon generating your brochure.

