



Broadway, Blyth

£245,000 Freehold

Boasting stylish and contemporary living spaces, this stunning 3-bedroom semi-detached house is a true gem in a sought-after location. The property features a modern lounge that is filled with natural light from the bay window, a jaw dropping open plan kitchen/diner, perfect for entertaining guests or enjoying family meals, downstairs W/C and utility room. To the first floor there are three generous sized bedrooms, bathroom and W/C. The outdoor space complements the property perfectly, with generous wrap-around gardens providing ample space for outdoor activities and relaxation. The garage, situated to the side of the property, offers additional storage space or parking options. A driveway in front of the garage ensures easy access and convenience for homeowners. Enjoy the best of indoor and outdoor living in this exceptional property with a perfect blend of comfort, style, and practicality.

Hallway

UPVC front door, stairs, vertical radiator. access to lounge and diner

Lounge

13' 9" x 12' 8" (4.18m x 3.87m)

UPVC bay window to front, radiator and gas fire.

Kitchen/ Diner

19' 5" x 12' 3" (5.92m x 3.74m)

UPVC door to rear, two vertical radiators, breakfast bar, spot lights, one and a half sink with mixer tap, top and bottom cupboards, gas hob, electric oven and extractor, combi boiler and storage cupboard.

Utility room

12' 5" x 7' 1" (3.78m x 2.16m)

UPVC door to the front and rear, UPVC window to side, top cupboards, plumbed for washing machine and dishwasher.

Downstairs W/C

3' 11" x 2' 6" (1.20m x 0.75m)

Frosted UPVC window to the front, low level W/C.

Landing

UPVC window to side, leading to W/C, bathroom, storage cupboard, three bedrooms.

Bedroom one

14' 9" x 10' 10" (4.50m x 3.30m)

UPVC bay window to front, radiator and fitted wardrobes.

Bedroom two

12' 6" x 12' 4" (3.82m x 3.75m)

UPVC window to rear and radiator.

Bedroom three

7' 11" x 7' 11" (2.41m x 2.41m)

UPVC window to front and radiator.

Upstairs W/C

5' 5" x 2' 7" (1.64m x 0.80m)

Frosted UPVC window to rear, low level W/C, loft access.

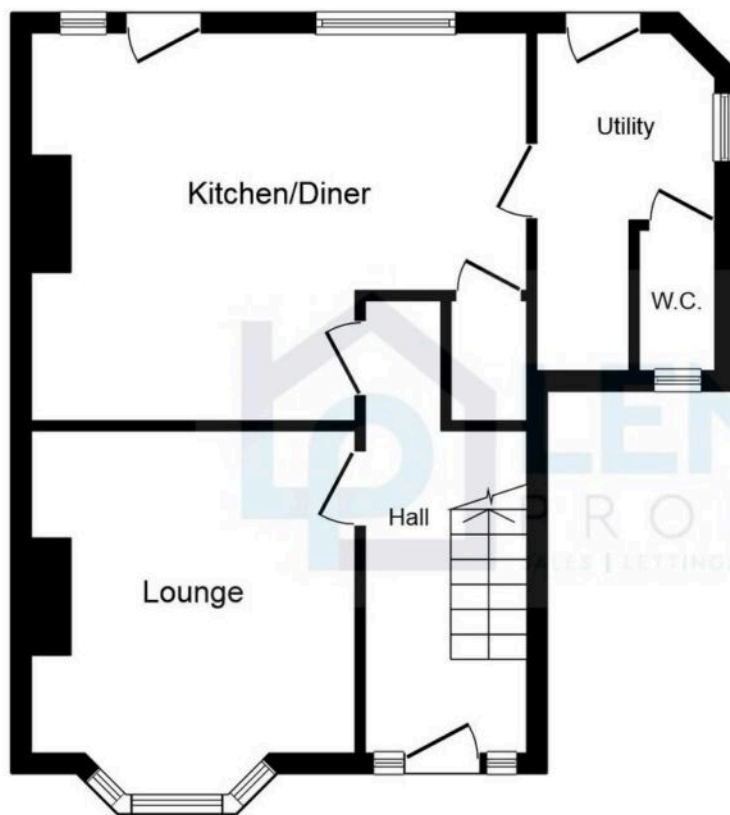
Bathroom

5' 10" x 5' 5" (1.77m x 1.64m)

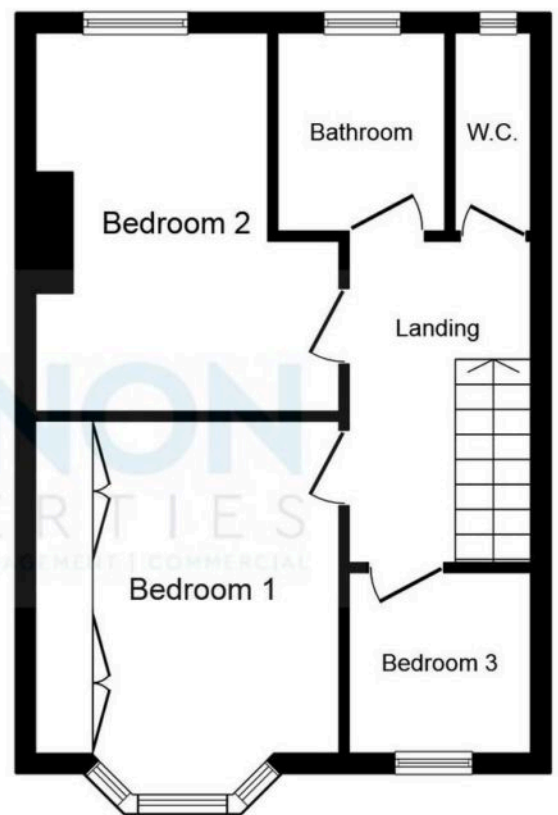
Frosted UPVC window to rear, vertical chrome radiator, sink, panelled bath with mains shower and spot lights.







Ground Floor



First Floor

This plan is for illustration purposes only and may not be representative of the property. Plan not to scale. Powered by PropertyBox

You can include any text here. The text can be modified upon generating your brochure.



You can include any text here. The text can be modified upon generating your brochure.

