



Eskdale Avenue, Blyth

£137,000 Freehold

We are delighted to offer this spacious four bedroom family home located on Eskdale Avenue in Cowpen Estate in Blyth. The property is located close to local schools, bus routes, local amenities and the ASDA Superstore. The property features an entrance hall, a combined lounge/diner, a breakfasting kitchen, and a downstairs W/C. The first floor comprises four bedrooms and a family bathroom, gas central heating, and double glazing. Externally, the house boasts front and rear gardens with a summer house to the rear. Viewings of this property are highly recommended.

Entrance

Via Composite front door to hallway.

Hallway

Double glazed window, radiator, stairs, access to lounge/ diner, kitchen and wc.

Lounge / Diner

18' 4" x 12' 10" (5.60m x 3.91m)

Double glazed window to the front and rear, radiator.

Kitchen

11' 9" x 10' 11" (3.58m x 3.32m)

Double glazed window, UPVC door leading to the rear garden, vertical radiator, standard radiator, extractor fan, one and a half stainless sink with mixer tap, electric hob and oven, extractor hood, wall and base units and drawers, tile splash backs, plumbed for washing machine, storage cupboard containing combi boiler.

WC

Frosted double glazed window, low level wc, radiator.

Landing

Double glazed window, four bedrooms, family bathroom, loft access

Bedroom One

11' 11" x 9' 7" (3.62m x 2.93m)

Double glazed window, cupboard/ wardrobe, radiator.

Bedroom Two

10' 6" x 9' 8" (3.21m x 2.95m)

Double glazed window, radiator.

Bedroom Three

10' 7" x 8' 6" (3.22m x 2.59m)

Double glazed window, cupboard/ wardrobe, radiator.

Bedroom Four

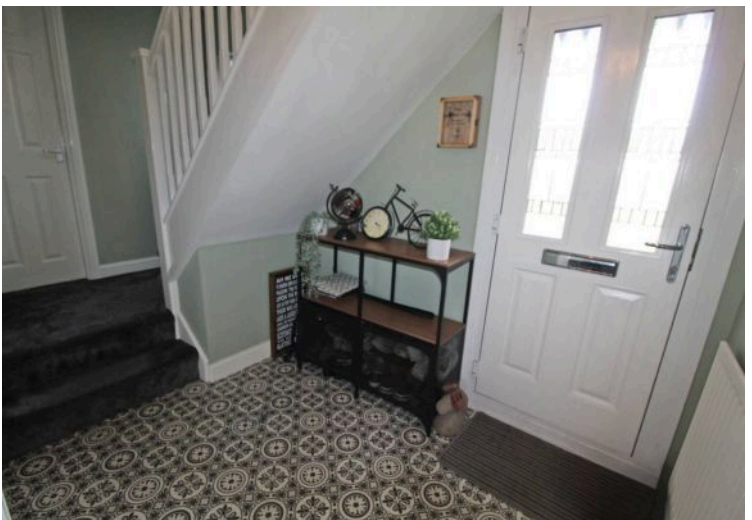
8' 11" x 8' 6" (2.72m x 2.59m)

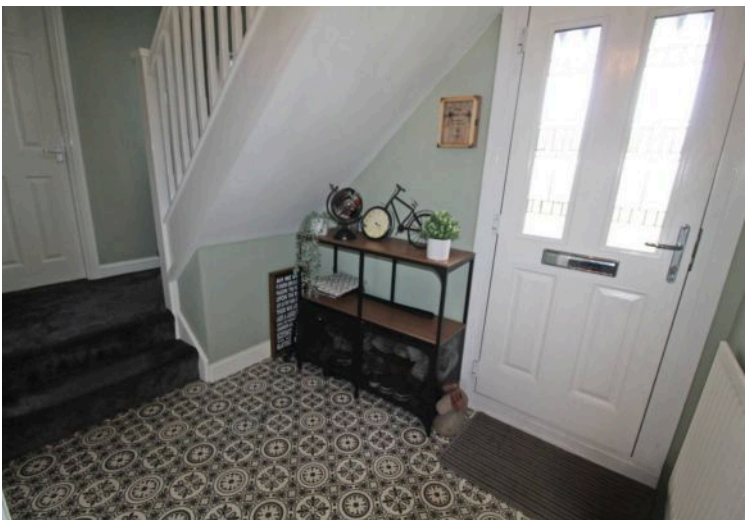
Double glazed window, Two cupboards/ wardrobes, radiator.

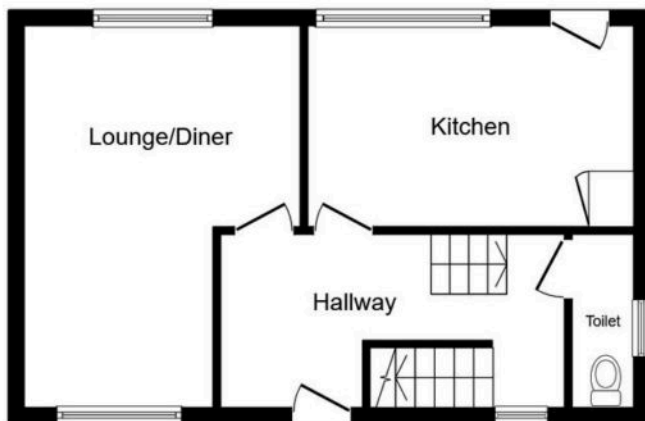
Bathroom

6' 2" x 5' 6" (1.89m x 1.68m)

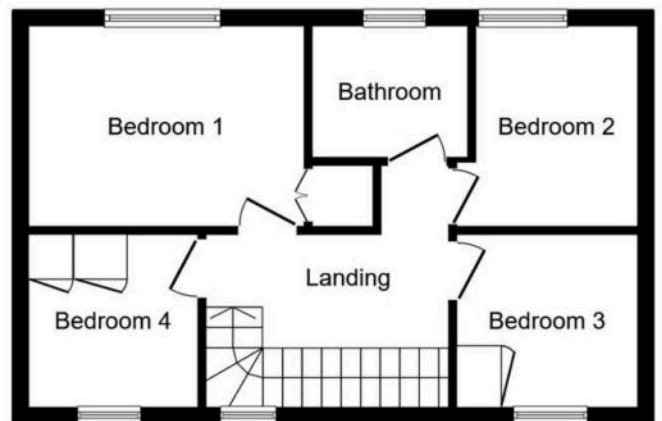
Frosted double glazed window, pedestal sink, low level wc, chrome towel warmer, panel bath with over bath mains shower, spotlights, extractor fan.







Ground Floor



First Floor

This floor plan is for illustrative purposes only. It is not drawn to scale. Any measurements, floor areas (including any total floor area), openings and orientations are approximate. No details are guaranteed, they cannot be relied upon for any purpose and do not form any part of any agreement. No liability is taken for any error, omission or misstatement. A party must rely upon its own inspection(s). Powered by www.Propertybox.io

You can include any text here. The text can be modified upon generating your brochure.



You can include any text here. The text can be modified upon generating your brochure.

