



Halton Grove, Blyth

£195,000 Freehold

This four bedroom townhouse, situated on the highly sought-after Halton Grove within Crofton Grange Estate Blyth. Conveniently located near Asda and major transport links, this well presented semi-detached home spans three floors and offers substantial living space. The property welcomes you with an entrance hallway leading to a downstairs cloakroom/W.C. and a spacious lounge, breakfasting kitchen is fitted with French doors that open onto the rear garden, offering both style and functionality. To the first floor, there are three well-proportioned bedrooms alongside a family bathroom. The top floor provides the master bedroom with ensuite making this an ideal home for growing families or those needing versatile living space. Externally there is rear garden, and allocated parking.

Early viewing is strongly advised to avoid disappointment! Interest in this property will be high call or email to arrange your viewing.

Entrance

Via composite front door

Hallway

Radiator, stairs to first floor landing, door to WC & lounge.

WC

Low level wc, wash hand basin, radiator, double glazed window.

Lounge

14' 4" x 11' 9" (4.36m x 3.58m)

Understairs cupboard, radiator, stairs to first floor landing.

Kitchen/Diner

15' 3" x 8' 9" (4.64m x 2.66m)

Fitted with a range of wall and base units to round edged work tops, stainless steel sink with mixer tap, tiled splash backs, plumbed for washing machine and dishwasher, radiator, double glazed window and French doors to rear.

Landing

Storage cupboard, radiator, double glazed window

Bedroom Two

9' 7" x 8' 11" (2.91m x 2.72m)

Radiator, double glazed window.

Bedroom Three

8' 10" x 7' 7" (2.68m x 2.30m)

Radiator, double glazed window.

Bedroom Four

7' 7" x 6' 3" (2.30m x 1.90m)

Radiator, double glazed window.

Bathroom

Low level wc, pedestal wash hand basin, panelled bath, half tiled walls, radiator, double glazed window.

Second Floor Landing

Velux window.

Bedroom One

15' 11" x 9' 1" (4.84m x 2.77m)

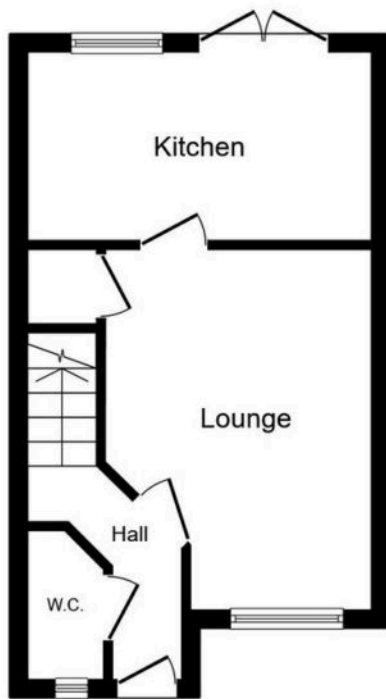
Velux window to rear, radiator, storage cupboard, dormer window to front.

Ensuite

Velux window, sink, wc, shower cubical with mains shower,

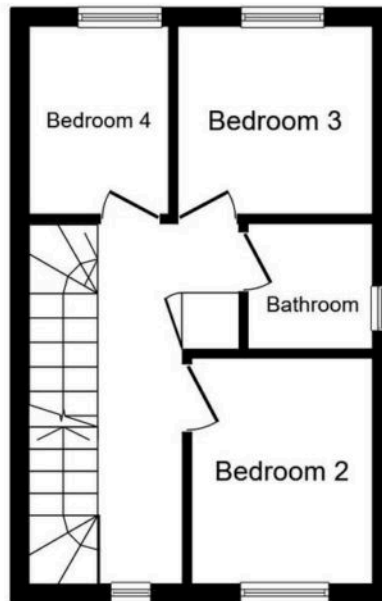






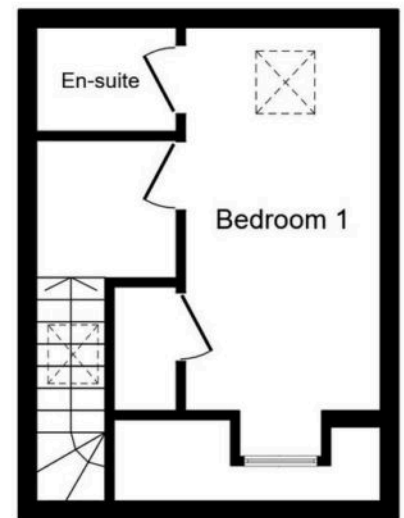
Ground Floor

Floor area 27.4 sq.m. (295 sq.ft.)



First Floor

Floor area 25.9 sq.m. (279 sq.ft.)



Second Floor

Floor area 22.0 sq.m. (237 sq.ft.)

Total floor area: 75.3 sq.m. (811 sq.ft.)

This floor plan is for illustrative purposes only. It is not drawn to scale. Any measurements, floor areas (including any total floor area), openings and orientations are approximate. No details are guaranteed, they cannot be relied upon for any purpose and do not form any part of any agreement. No liability is taken for any error, omission or misstatement. A party must rely upon its own inspection(s). Powered by www.Propertybox.io

You can include any text here. The text can be modified upon generating your brochure.



You can include any text here. The text can be modified upon generating your brochure.

