



Bromley Gardens, Blyth

£215,000 Freehold

We are delighted to offer for sale this four bedroom semi detached house, situated within the sought after Bromley Gardens on South Beach Blyth. Offering spacious and versatile living accommodation, perfect for families seeking a comfortable and convenient lifestyle with the accommodation on offer briefly comprising; Entrance hall, lounge, dining room, kitchen, lean to conservatory. First floor, landing, four bedrooms main with ensuite and a family bathroom. Externally there are generous gardens to the front & rear. Driveway leading to a single garage. Within the catchment area for local schools which include Bede, and close proximity to the local beach, amenities nearby include local shops, as well as transport links to surrounding areas including the Northumberland railway line. We anticipate a great deal of interest in the property and early inspection is encouraged.

Entrance

Via double glazed door to the porch

Hallway

Radiator, stairs to the first floor, double door access to the lounge.

Lounge

13' 2" x 12' 4" (4.01m x 3.75m)

Understairs cupboard, radiator, double glazed window.

Dining Room

10' 10" x 8' 0" (3.31m x 2.43m)

Radiator, double glazed window.

Kitchen

15' 10" x 10' 9" (4.83m x 3.28m)

Fitted with a range of wall and base units to round edged work tops, 1 1/2 stainless steel sink unit with mixer taps, electric hob and oven, plumbed for washer, radiator, two double glazed windows to rear, double glazed door to rear, internal door access to the garage.

Lean to Conservatory**First Floor Landing**

Loft Access, access to four bedrooms and family bathroom.

Bedroom One

18' 1" x 7' 5" (5.52m x 2.27m)

Fitted wardrobes, radiator, loft access, double glazed window to front.

En Suite

Frosted double glazed window, low level wc, vanity sink unit, double shower cubical with electric shower.

Bedroom Two

8' 8" x 15' 7" (2.64m x 4.75m)

Fitted wardrobes, radiator, double glazed window.

Bedroom Three

9' 2" x 9' 1" (2.80m x 2.78m)

Radiator, double glazed window, cupboard with combi boiler.

Bedroom Four

9' 10" x 6' 6" (3.00m x 1.98m)

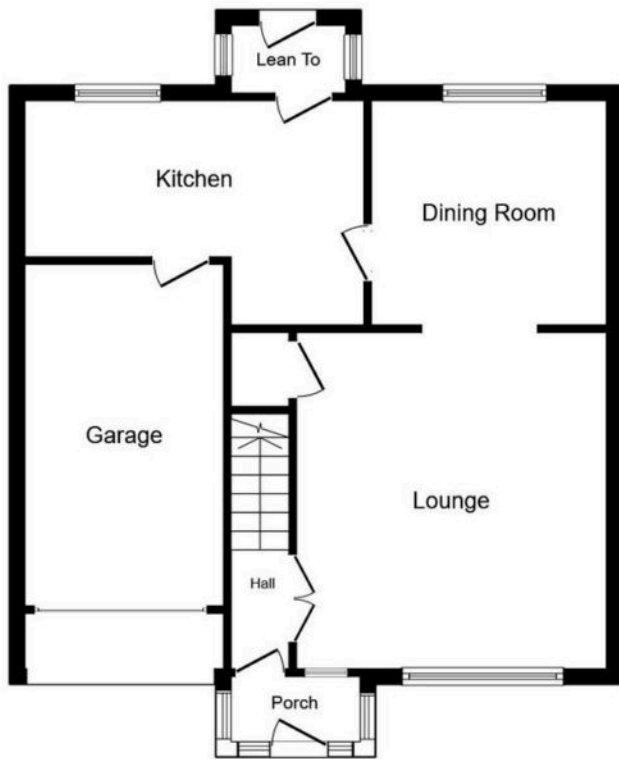
Storage cupboard, radiator, double glazed window .

Bathroom/WC

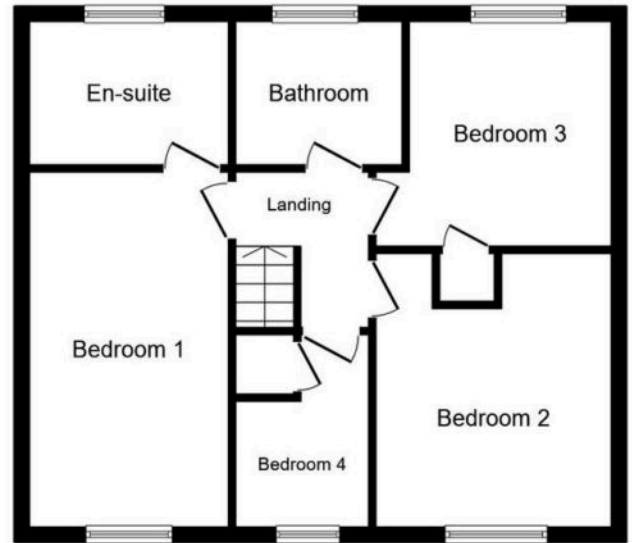
Low level wc and sink vanity unit, Shower cubical, chrome towel rail, double glazed window.







Ground Floor



First Floor

This floor plan is for illustrative purposes only. It is not drawn to scale. Any measurements, floor areas (including any total floor area), openings and orientations are approximate. No details are guaranteed, they cannot be relied upon for any purpose and do not form any part of any agreement. No liability is taken for any error, omission or misstatement. A party must rely upon its own inspection(s). Powered by www.Propertybox.io

You can include any text here. The text can be modified upon generating your brochure.



You can include any text here. The text can be modified upon generating your brochure.

