



2 Burnham Close, Blyth

£160,000 Freehold

This well presented three bedroom semi detached house, Located on Burnham Close in the very sought after South Beach Estate in Blyth. Which is just a stone's throw from Blyth Beach, nearby schools, and transport links.

This lovely home briefly comprises; entrance hall, open plan lounge and dining room, modern kitchen. To the first floor there are three bedrooms and a family bathroom.

To the front of the property you will find a front garden mainly laid to lawn and a double length driveway to comfortably accommodate two cars.

The enclosed rear garden mainly laid to lawn with a summer house, also has a paved patio area making it perfect for entertaining or having BBQ's.

Viewings highly recommended to appreciate this wonderful family home.

Entrance

Through UPVC front door

Hallway

Radiator, stairs, access via double doors to lounge

Lounge

12' 4" x 13' 0" (3.76m x 3.96m)

UPVC double glazed window to the front, understairs storage cupboard, electric feature fireplace, radiator, open access through to dining area.

Dining Room

UPVC double glazed window to the rear, radiator, door access to the kitchen.

Kitchen

11' 4" x 7' 6" (3.45m x 2.29m)

UPVC double glazed window to the side, UPVC door to the rear leading to the garden, fitted wall and base units, stainless sink with mixer tap, plumbed for washing machine, tile splash backs, radiator.

Landing

UPVC double glazed window, loft access, access to three bedrooms and the family bathroom.

Bedroom One

13' 2" x 8' 0" (4.01m x 2.44m)

UPVC double glazed window to the front, fitted wardrobes with sliding doors, radiator.

Bedroom Two

9' 3" x 9' 2" (2.82m x 2.79m)

UPVC double glazed window to the rear, storage cupboard with combi boiler, radiator.

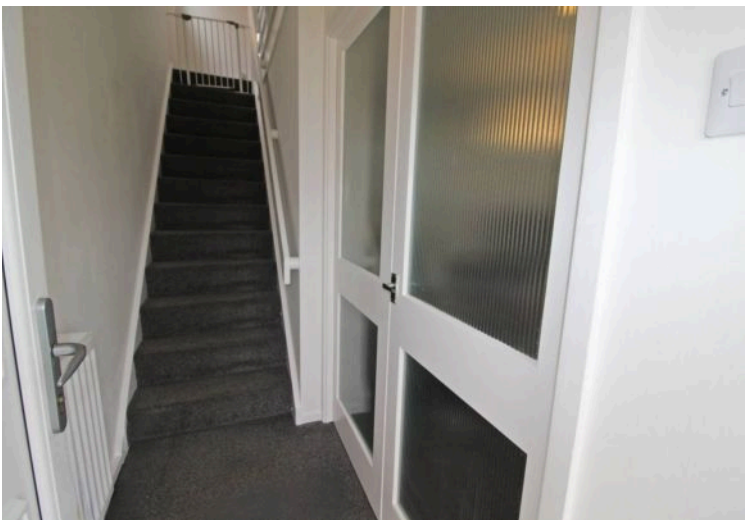
Bedroom Three

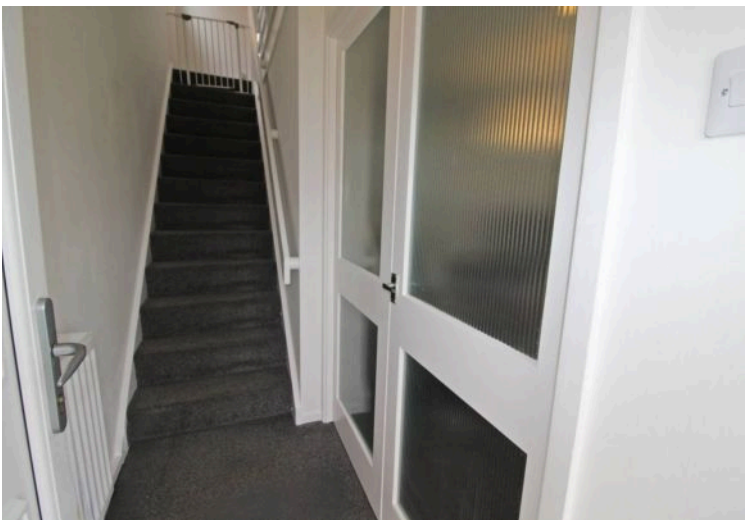
9' 10" x 6' 6" (2.99m x 1.98m)

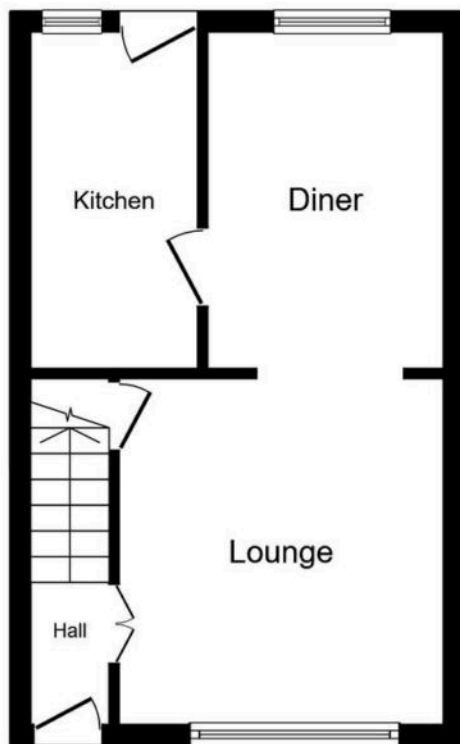
UPVC double glazed window to the front, storage cupboard, radiator.

Bathroom

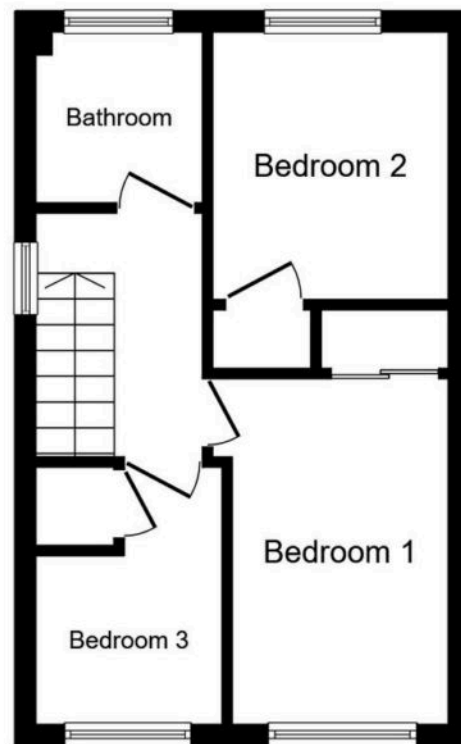
Frosted UPVC double glazed window, vanity sink and wc unit, panelled bath with over bath mains shower, chrome heated towel rail, spotlights.







Ground Floor



First Floor

This floor plan is for illustrative purposes only. It is not drawn to scale. Any measurements, floor areas (including any total floor area), openings and orientations are approximate. No details are guaranteed, they cannot be relied upon for any purpose and do not form any part of any agreement. No liability is taken for any error, omission or misstatement. A party must rely upon its own inspection(s). Powered by www.Propertybox.io

You can include any text here. The text can be modified upon generating your brochure.



You can include any text here. The text can be modified upon generating your brochure.

