



Salisbury Street, Blyth

£75,000 Freehold

Introducing this three bedroom mid terrace house, ideally situated close to amenities, offering a perfect blend of comfort and convenience. Step inside this property to discover a welcoming living space that is ready to be transformed into your home. The ground floor features lounge, dining room, kitchen. Upstairs, you will find three bedrooms & family bathroom. This property boasts an enclosed rear yard, offering a private outdoor retreat. Council Tax Band A and EPC Rating D ensure affordability and energy efficiency. Don't miss out on the opportunity to make this property your own.

Entrance

Via double glazed door.

Lounge

Radiator, double glazed window

Dining Room

13' 1" x 12' 4" (4.00m x 3.77m)

French patio doors to rear.

Kitchen

12' 5" x 6' 7" (3.78m x 2.01m)

Fitted with a range of wall and base units to round edged work tops, stainless steel sink unit with mixer taps, built in oven and hob, double glazed window and door to rear.

Landing**Bedroom One**

14' 2" x 12' 6" (4.33m x 3.80m)

Radiator, double glazed window.

Bedroom Two

13' 4" x 10' 10" (4.07m x 3.31m)

Radiator, double glazed window.

Bedroom Three

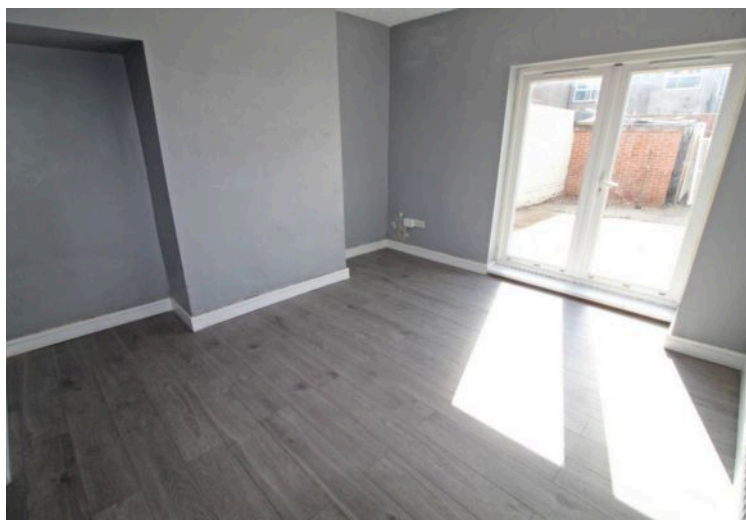
10' 2" x 6' 5" (3.11m x 1.95m)

Radiator, double glazed window.

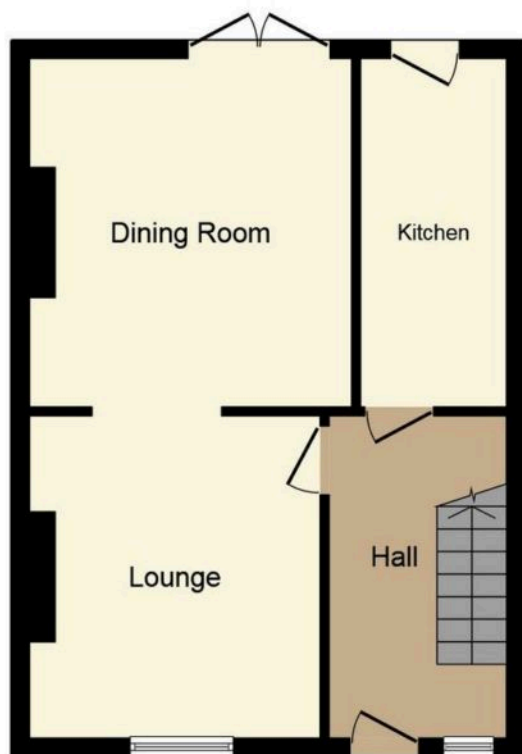
Bathroom

8' 0" x 5' 5" (2.43m x 1.64m)

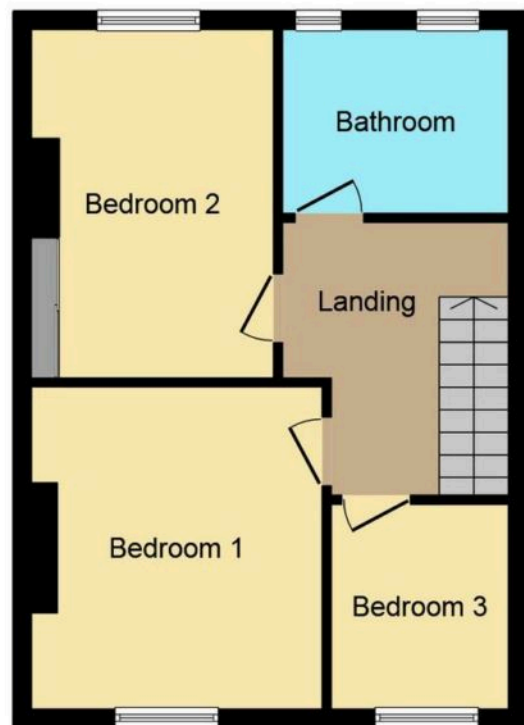
Low level wc, pedestal wash hand basin, panelled bath with shower screen, tiled walls, two double glazed windows.







Ground Floor



First Floor

This Floor Plan is for illustration purposes only and may not be representative of the property. The position and size of doors, windows and other features are approximate. Unauthorized reproduction prohibited. © PropertyBOX

You can include any text here. The text can be modified upon generating your brochure.



You can include any text here. The text can be modified upon generating your brochure.

