

Cowpen Hall Road, Blyth

£99,950 Freehold

We are pleased to present this immaculate two-bedroom semi-detached residence, situated in the sought-after location of Cowpen Hall Road.

The accommodation briefly comprises an entrance hallway, a well-proportioned modern lounge, a fitted kitchen, and a conservatory to the rear at ground floor level. To the first floor, there are two generously sized double bedrooms and a contemporary, stylish bathroom.

Externally, the property benefits from a front garden and driveway, whilst to the rear there is a spacious enclosed garden, complete with a car port offering additional off-street parking.

Early viewing is highly recommended in order to fully appreciate all that this delightful home has to offer.

Hallway

Composite front door, UPVC window to the front, radiator, stairs, under stairs cupboard, access to the lounge and kitchen.

Lounge

14' 11" x 12' 5" (4.54m x 3.78m)

Vertical radiator.

Kitchen

10' 0" x 8' 9" (3.04m x 2.67m)

UPVC window to the front, UPVC door to the side, one and a half sink with mixer tap, spotlights, wall and base units, electric hob, electric oven, extractor hood and plumbed for a washing machine.

Conservatory

9' 2" x 7' 1" (2.79m x 2.16m)

Solid roof, UPVC windows to three sides and UPVC French doors to the rear.

Landing

Storage cupboard, access to both bedrooms, bathroom and loft.

Bedroom one

12' 6" x 10' 0" (3.82m x 3.06m)

UPVC window to the front, radiator and storage cupboard with combi boiler.

Bedroom two

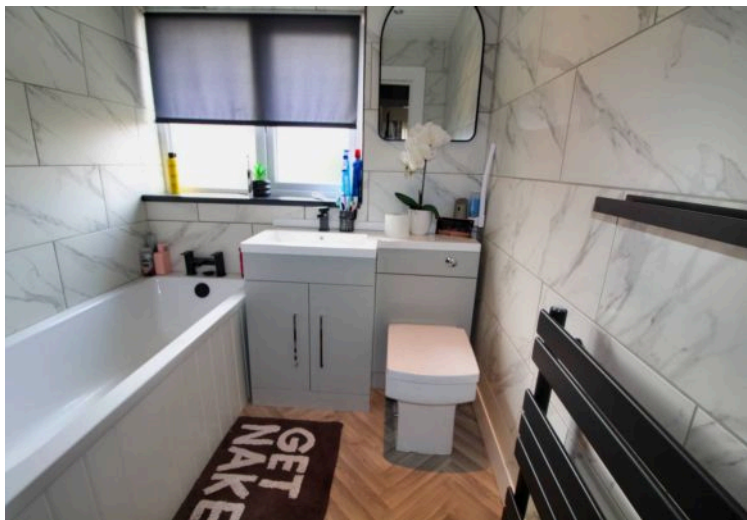
9' 4" x 10' 2" (2.84m x 3.10m)

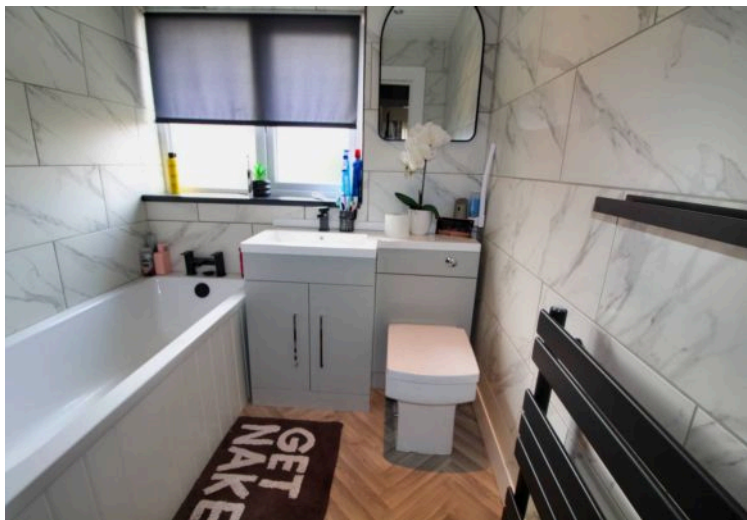
UPVC window to the rear, radiator and two fitted cupboards.

Bathroom

6' 10" x 6' 1" (2.08m x 1.86m)

Frosted UPVC window to the rear, vanity sink and W/C unit, spotlights and vertical black radiator.





You can include any text here. The text can be modified upon generating your brochure.



You can include any text here. The text can be modified upon generating your brochure.

