



Kingfisher Way, Blyth

£159,950 Freehold

A Prime Opportunity to Acquire an Extended Three-Bedroom Mid-Terraced Residence in South Blyth, Close to the Beach

We are pleased to offer for sale this beautifully extended three-bedroom mid-terraced home, enviably positioned in the much sought-after area of South Blyth, just a short stroll from the beach.

Upon entering the property, you are welcomed by an entrance hallway leading to a comfortable lounge and an impressive extended kitchen and family living area, thoughtfully designed for modern living.

To the first floor, there are two generously sized double bedrooms and a well-proportioned single bedroom. A staircase provides access to a spacious loft area, offering further potential for development, subject to the necessary consents. The accommodation is completed by a contemporary family bathroom, finished to a high

Hallway

UPVC front door, stairs with access to the lounge.

Lounge

13' 7" x 12' 4" (4.13m x 3.77m)

UPVC bow window to the front, UPVC frosted window to the front, radiator and storage cupboard.

Kitchen with family living area

20' 2" x 15' 7" (6.15m x 4.76m)

Wall and base units, vertical anthracite radiator, UPVC door to the rear, Velux window to the rear, sink with mixer tap, gas hob, extractor hood, quartz surfaces, integrated oven & grill, tiled splash backs, plumbed for a washing machine, dishwasher and combi boiler.

Landing

Radiator, access to the three bedrooms and bathroom.

Bedroom one

13' 0" x 9' 1" (3.97m x 2.78m)

UPVC window to the front, radiator and fitted wardrobes.

Bedroom two

9' 3" x 9' 1" (2.83m x 2.78m)

UPVC window to the rear, radiator and storage cupboard.

Bedroom three

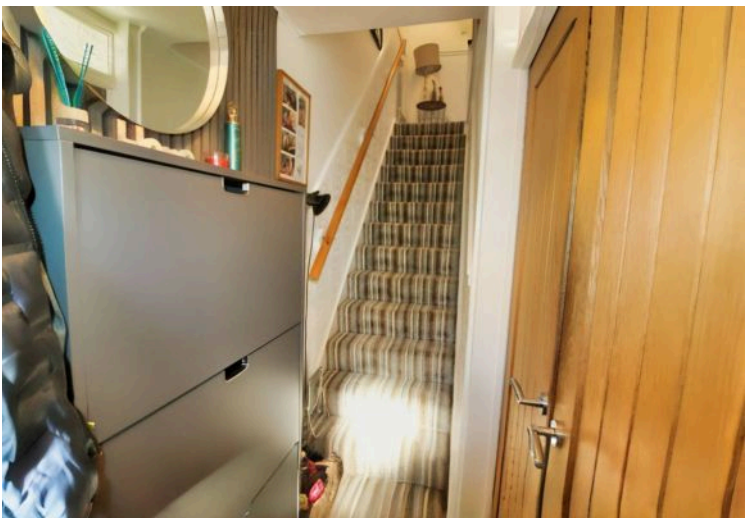
10' 0" x 6' 9" (3.06m x 2.05m)

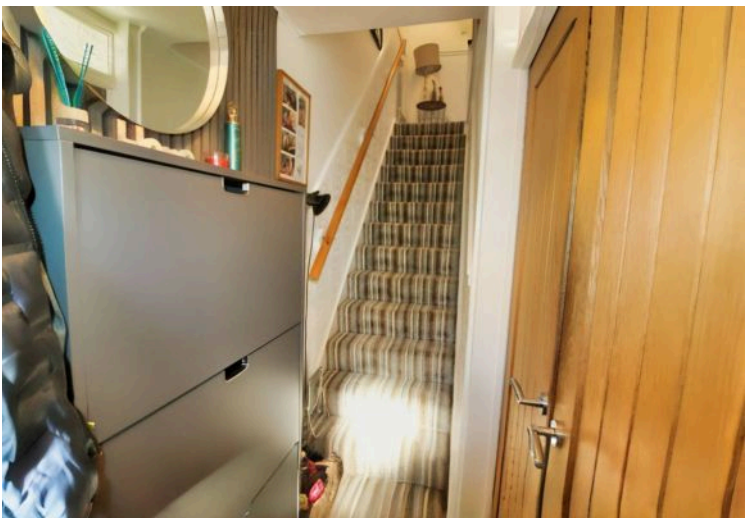
UPVC window to the front, radiator and stairs to the loft space.

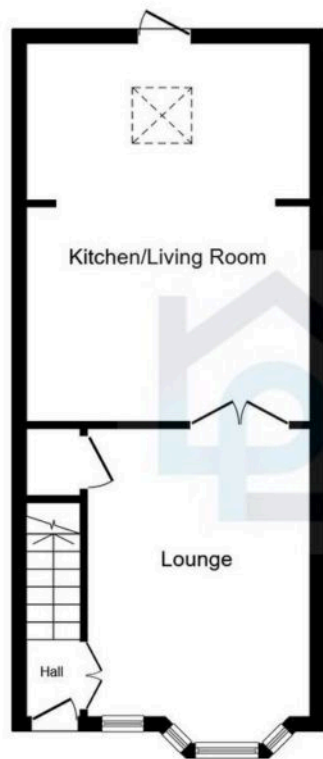
Loft space

15' 9" x 11' 9" (4.80m x 3.57m)

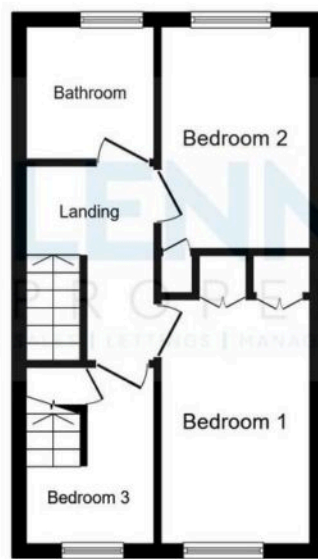
Velux window to the rear, radiator, cupboards to the eaves.



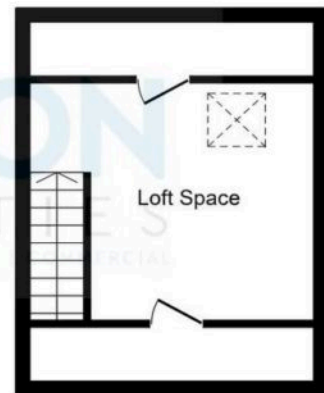




Ground Floor



First Floor



Second Floor

This floor plan is for illustrative purposes only. It is not drawn to scale. Any measurements, floor areas (including any total floor area), openings and orientations are approximate. No details are guaranteed, they cannot be relied upon for any purpose and do not form any part of any agreement. No liability is taken for any error, omission or misstatement. A party must rely upon its own inspection(s). Powered by www.Propertybox.io

You can include any text here. The text can be modified upon generating your brochure.



You can include any text here. The text can be modified upon generating your brochure.

