

Marine Terrace, Blyth

£125,000 Freehold

An Exceptionally Rare and Unique Five-Bedroom Mid-Terrace Property

We are delighted to bring to market this remarkably rare and characterful five-bedroom mid-terrace residence, ideally situated within close proximity to the town centre, reputable schools, and excellent transport links.

The accommodation briefly comprises a welcoming vestibule, entrance hallway, spacious lounge, separate dining room, guest WC, and a well-appointed kitchen. To the mid-landing, there is a family bathroom, followed by a main landing that provides access to three generously proportioned bedrooms, one of which benefits from the added luxury of a private sauna. The upper landing leads to a further two bedrooms.

This impressive property offers a wealth of potential and can be adapted to suit a variety of needs and lifestyles. It presents an exceptional opportunity for those seeking a forever family home in a highly convenient location.

Vestibule

Wooden door to the front and internal door to the hallway.

Hallway

Two radiators, stairs, access to the lounge, dining room, W/C and kitchen.

Lounge

18' 7" x 16' 3" (5.66m x 4.95m)

Wooden frame bay window to the front and radiator.

Dining Room

14' 4" x 14' 10" (4.36m x 4.52m)

Wooden frame window to the rear, radiator, and mains shower cubicle. (1.24 x 1.16)

W/C

5' 3" x 2' 8" (1.61m x 0.82m)

Hand basin and low level macerator W/C.

Kitchen

Wooden frame window to the side, wooden door to the side, one and a half sink with mixer tap, wall and base units, tiled splash backs, gas range cooker and plumbed for a washing machine.

Mid Landing

Access to the bathroom

Bathroom

8' 2" x 5' 11" (2.49m x 1.80m)

Frosted wooden frame window to the side, low level W/C vanity sink, combi boiler, vertical chrome towel warmer and mains shower.

Landing

Access to three bedrooms and stairs to the upper floor.

Bedroom One

15' 0" x 13' 5" (4.57m x 4.10m)

Wooden frame window to the front and radiator.

Bedroom Two

14' 10" x 14' 3" (4.53m x 4.34m)

Wooden frame window to the rear, spotlights, radiator and sauna.

Bedroom Three

10' 6" x 7' 6" (3.19m x 2.29m)

Wooden frame window to the front and radiator.

Upper Floor Landing

Velux window to the rear and access to two bedrooms.

Bedroom Four

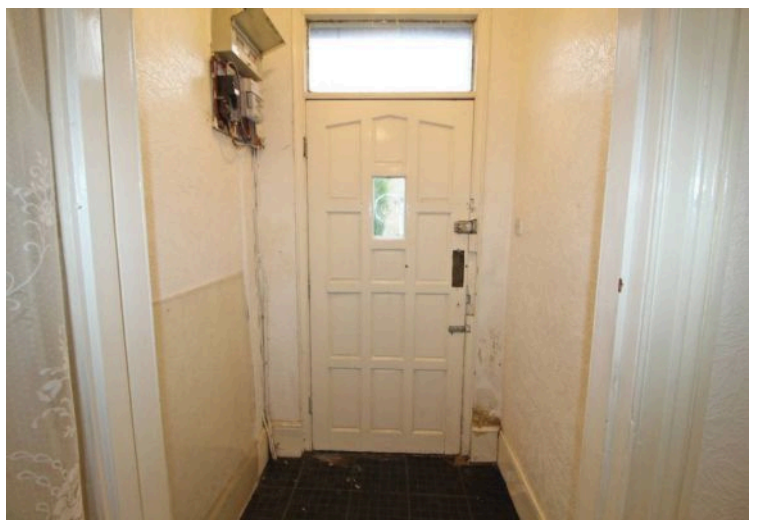
13' 7" x 11' 4" (4.14m x 3.46m)

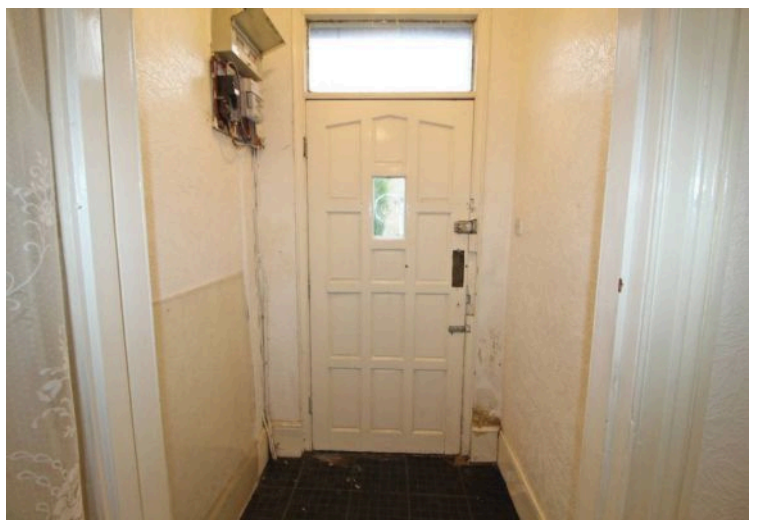
Velux window to the front, radiator

Bedroom Five

18' 1" x 8' 6" (5.50m x 2.59m)

Velux window to the front, radiator and featured fire place.







This floor plan is for illustrative purposes only. It is not drawn to scale. Any measurements, floor areas (including any total floor area), openings and orientations are approximate. No details are guaranteed, they cannot be relied upon for any purpose and do not form any part of any agreement. No liability is taken for any error, omission or misstatement. A party must rely upon its own inspection(s). Powered by www.Propertybox.io

You can include any text here. The text can be modified upon generating your brochure.



You can include any text here. The text can be modified upon generating your brochure.

