



Snowdrop Close, Blyth

£169,995 Freehold

We are delighted to present this very well presented two-bedroom detached coach house, ideally situated in a popular and sought-after location. This modern property is an excellent opportunity for first-time buyers or those seeking a stylish, low-maintenance home within easy reach of local amenities, schools, and transport links. The spacious and thoughtfully designed layout begins with a welcoming entrance that leads into a bright and airy open plan lounge/kitchen, perfect for relaxing or entertaining guests. Both bedrooms are generously sized, with the main bedroom benefitting from a sleek ensuite shower room for added convenience. A further well-appointed bathroom serves the second bedroom and guests. The property is equipped with an efficient air source heat pump system, ensuring comfort and energy efficiency throughout the year. Additional features include ample storage and a neutral décor, making this home ready to move into with minimal effort.

Externally the property enjoys a private, enclosed paved garden to the rear. The detached coach house also

Entrance

Via Door into Hall

Hallway

Stairs to first floor landing, radiator, double glazed door to rear.

Open Plan Lounge/Kitchen

19' 6" x 15' 7" (5.94m x 4.74m)

Fitted with a range of wall and base units to round edged work tops, 1 1/2 sink unit with mixer taps, electric hob and oven with extractor hood over, integrated dishwasher, washing machine, fridge freezer, radiator, double glazed window to front and rear.

Bedroom One

14' 4" x 10' 3" (4.38m x 3.12m)

Fitted wardrobes, radiator, double glazed window to front.

En Suite

Low level wc, vanity wash hand basin, double shower cubical with mains shower, tiled walls, radiator, double glazed window.

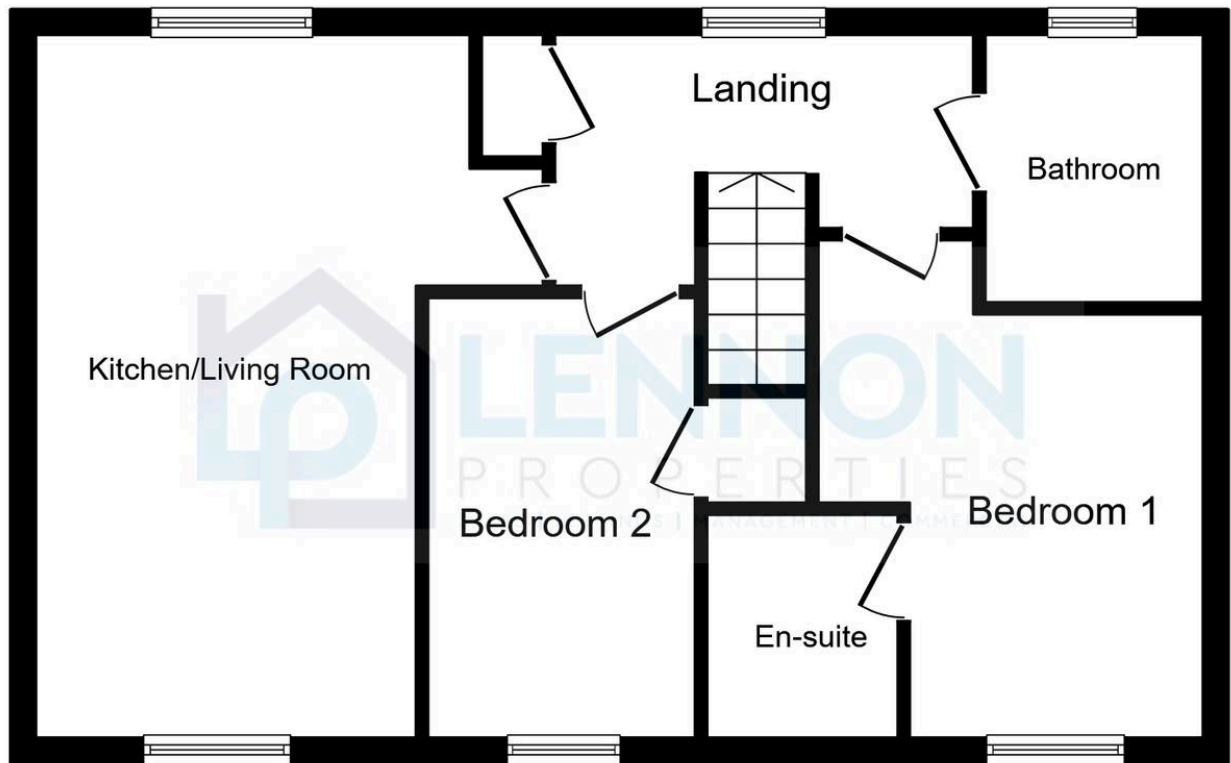
Bedroom Two

12' 2" x 8' 3" (3.71m x 2.52m)

Storage cupboard, radiator, double glazed window.

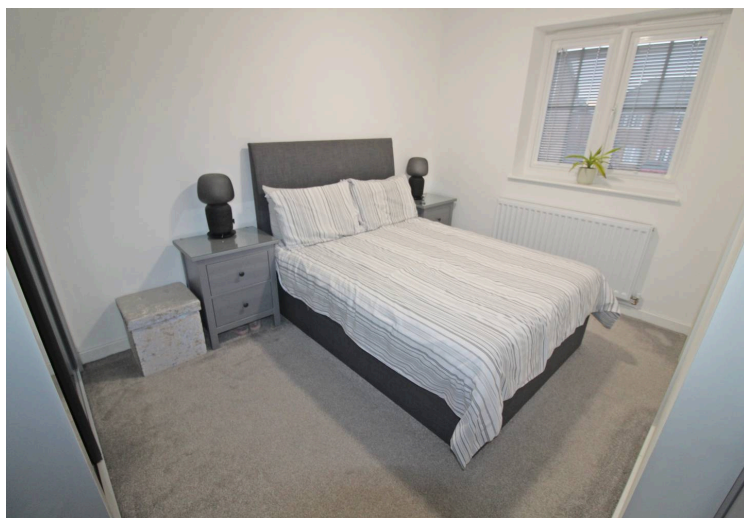
Bathroom/WC

Low level wc, vanity wash hand basin, panelled bath, half tiled walls, radiator, double glazed window.

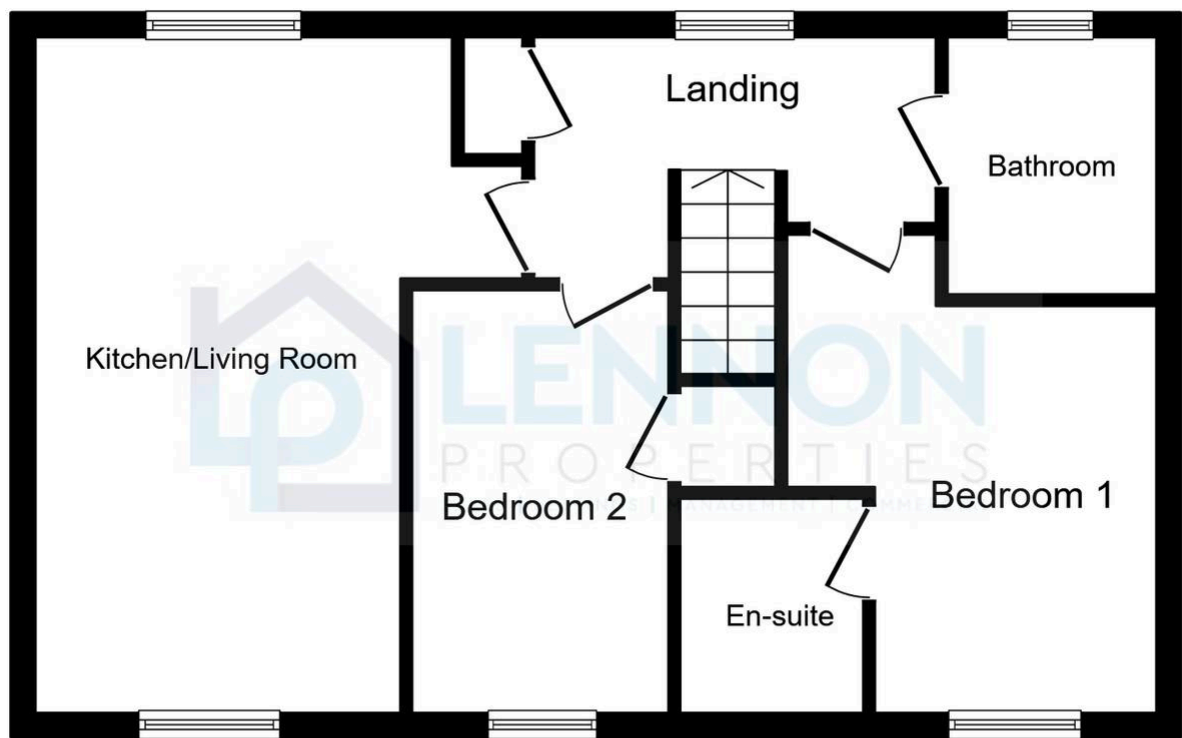


First Floor

This floor plan is for illustrative purposes only. It is not drawn to scale. Any measurements, floor areas (including any total floor area), openings and orientations are approximate. No details are guaranteed, they cannot be relied upon for any purpose and do not form any part of any agreement. No liability is taken for any error, omission or misstatement. A party must rely upon its own inspection(s). Powered by www.Propertybox.io







First Floor

This floor plan is for illustrative purposes only. It is not drawn to scale. Any measurements, floor areas (including any total floor area), openings and orientations are approximate. No details are guaranteed, they cannot be relied upon for any purpose and do not form any part of any agreement. No liability is taken for any error, omission or misstatement. A party must rely upon its own inspection(s). Powered by www.Propertybox.io

You can include any text here. The text can be modified upon generating your brochure.



You can include any text here. The text can be modified upon generating your brochure.

