



## Northumberland Court, Blyth

£55,000 Leasehold

This beautifully presented two-bedroom flat offers contemporary living with standout features including off-road parking, a charming brick exterior, and a secure private entrance. Step inside to discover a spacious open plan living and dining area, bathed in natural light from large windows and enhanced by elegant wood flooring and modern decor. The welcoming entryway sets the tone with a stylish front door and durable hardwood flooring, while both bedrooms provide a calm, inviting ambience with wooden flooring, ample natural light, and built-in storage for convenience.

The sleek modern kitchen is equipped with integrated appliances, a gas hob, and stylish subway tile backsplash, complemented by wood-effect flooring and ample counter space – perfect for those who love to cook and entertain. The bathroom is finished to a high standard, featuring a contemporary walk-in shower, marble-effect

**Hallway**

Composite front door, access to the bathroom, lounge/diner, both bedrooms and kitchen.

**Lounge/diner**

Two UPVC windows, one to the front and one to the rear and radiator.

**Kitchen**

UPVC window to the side, fitted wall and base units, stainless steel sink, oven, hob and extractor.

**Bathroom**

Shower cubicle, vanity sink unit and low level w/c.

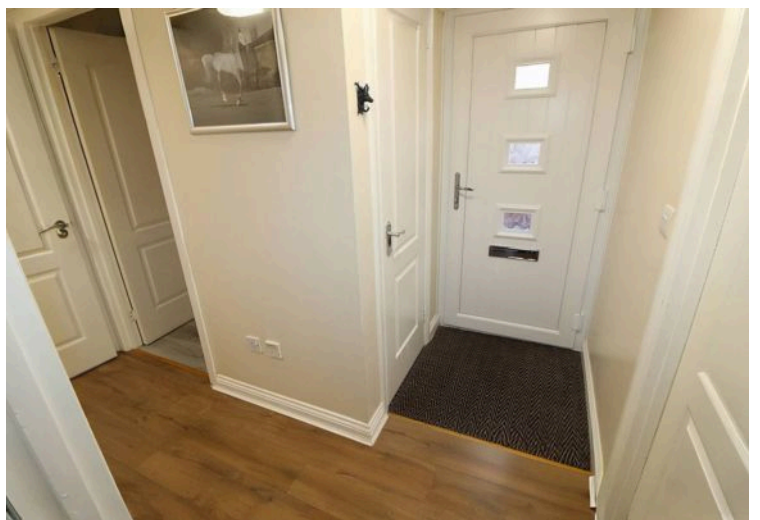
**Bedroom one**

UPVC window to the rear, radiator and storage cupboard.

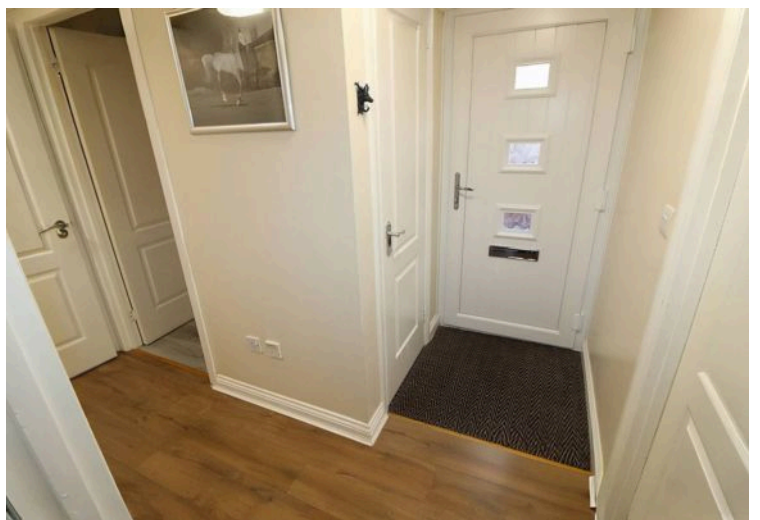
**Bedroom two**

UPVC window to the rear and radiator.









You can include any text here. The text can be modified upon generating your brochure.



You can include any text here. The text can be modified upon generating your brochure.

