



Pecket Close, Blyth

£185,000 Freehold

Nestled in a highly sought-after residential area, this beautifully presented three-bedroom semi-detached house offers the perfect blend of comfort, style, and practicality, making it an ideal family home. From the moment you step inside, you are welcomed by a bright and airy entrance hall that leads into a spacious lounge, perfect for relaxing evenings or entertaining guests. The modern kitchen is thoughtfully designed with ample storage and worktop space. Upstairs, the property boasts three generously sized bedrooms, each tastefully decorated and flooded with natural light. The contemporary family bathroom features quality fixtures and fittings, ensuring convenience and comfort for the whole household. Every room has been meticulously maintained and finished to a high standard, allowing you to move straight in and start enjoying your new home from day one. Step outside to discover a delightful enclosed garden, offering a private and secure space for children to play or for hosting summer gatherings with friends and family. The property also benefits from side access to the garden,

ENTRANCE

Via double glazed door

ENTRANCE PORCH

Frosted upvc window to front, radiator, upvc doors leading to lounge

LOUNGE

15' 2" x 13' 11" (4.62m x 4.23m)

Storage cupboard under stairs, two radiators, Upvc window to front.

DINING ROOM

10' 6" x 8' 7" (3.20m x 2.62m)

Radiator, Upvc window to rear,

KITCHEN

10' 6" x 9' 0" (3.21m x 2.75m)

Fitted with a range of wall and base units with complimentary wood worktops, ceramic sink and mixer, integrated gas hob with electric oven, radiator. Upvc window to rear, spotlights to ceiling,

UTILITY ROOM

8' 7" x 8' 6" (2.62m x 2.60m)

Plumbed for washing machine, wall and base units with wood worktops, radiator. Upvc window and door to rear.

FIRST FLOOR LANDING

Loft access which is partially boarded and housing boiler, Upvc window to side.

BEDROOM ONE

12' 0" x 9' 8" (3.67m x 2.94m)

Fitted wardrobes, radiator, Upvc window to front.

BEDROOM TWO

11' 7" x 10' 5" (3.54m x 3.18m)

Fitted wardrobes, storage cupboard, radiator. Upvc window to rear.

BEDROOM THREE

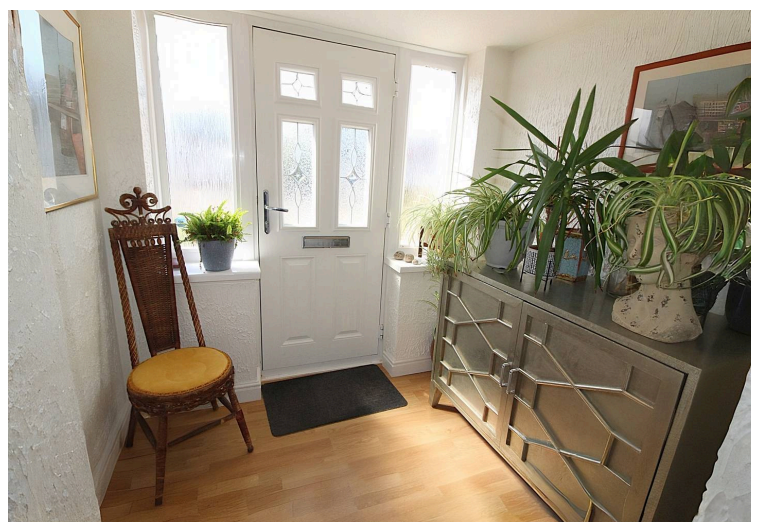
8' 11" x 7' 8" (2.71m x 2.34m)

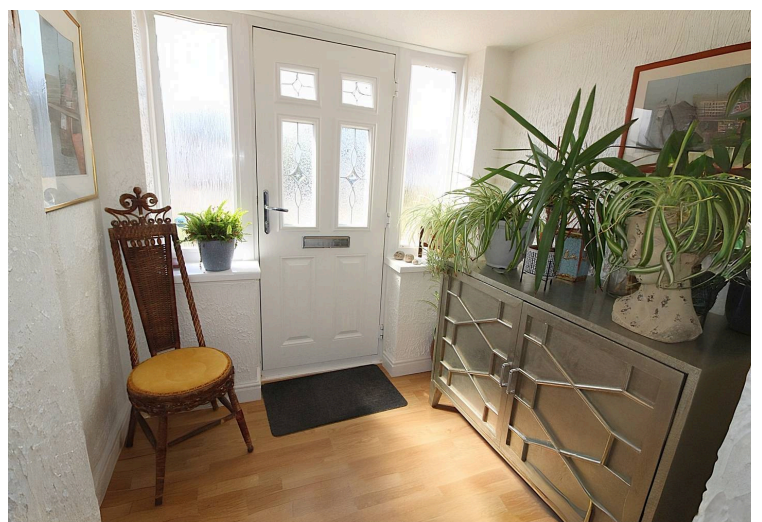
Radiator, fitted wardrobes, Upvc window to front

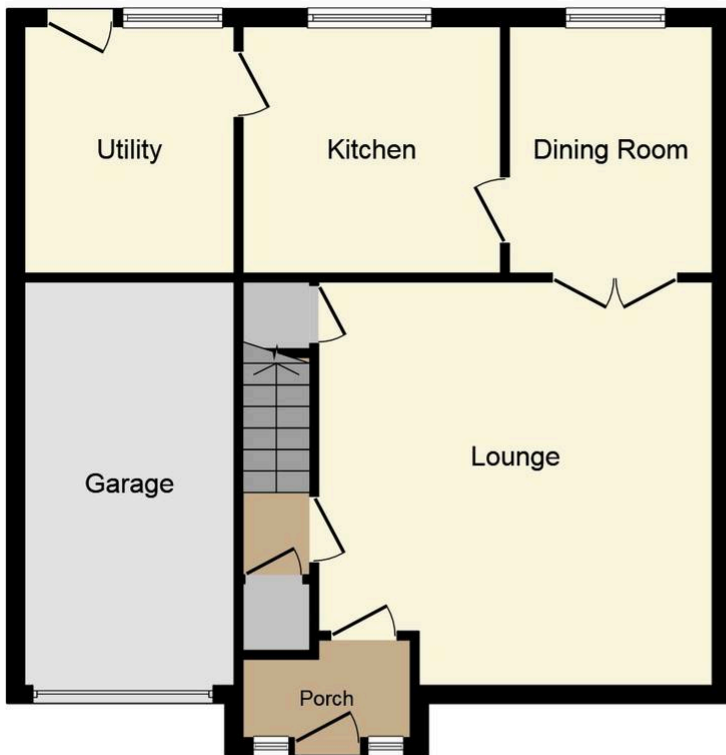
BATHROOM

8' 8" x 5' 6" (2.64m x 1.67m)

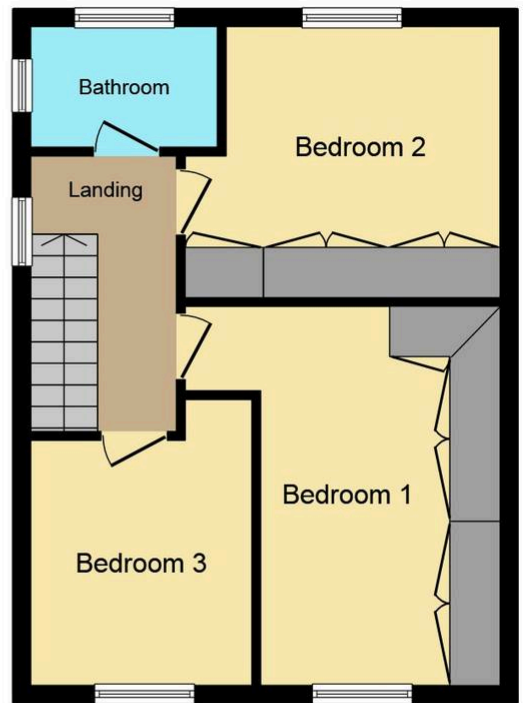
Low level w.c, wash hand basin with vanity unit, panelled bath with mains shower over, extractor fan, vertical chrome radiator, spotlights to ceiling, frosted upvc window to side.







Ground Floor



First Floor

This Floor Plan is for illustration purposes only and may not be representative of the property. The position and size of doors, windows and other features are approximate. Unauthorized reproduction prohibited. © PropertyBOX

You can include any text here. The text can be modified upon generating your brochure.



You can include any text here. The text can be modified upon generating your brochure.

