



## Chase Meadows, Blyth

£300,000

Presenting this remarkable four-bedroom detached family home, perfectly positioned in a highly sought-after location and thoughtfully extended to offer exceptional living space throughout. As you step into the welcoming entrance hall, you are immediately greeted by a sense of light and space that sets the tone for the entire property. This kitchen and dining area is designed with both family life and entertaining in mind. This expansive space boasts modern cabinetry, high-quality integrated appliances, and ample room for a large dining table, making it the perfect hub for gatherings and daily meals alike. Flowing seamlessly from the kitchen is the heart of the home the impressive rear family room which is a true highlight, featuring stylish bi-folding doors that invite natural light to flood in and create an inviting atmosphere for relaxing or socialising. Also a lounge to the front. The versatile layout continues with four generously sized bedrooms upstairs, each offering comfortable accommodation for family members or guests. The main bedroom benefits from a contemporary en-suite shower room, providing a private retreat complete with sleek fixtures and fittings. The remaining bedrooms are well-proportioned, ideal for children, guests, or a home office if desired, and are served by a modern family bathroom finished to a high standard. Throughout the property, tasteful décor

**Entrance**

Via Composite front door.

**Hallway**

Stairs to first floor landing, radiator.

**Lounge**

11' 5" x 17' 7" (3.48m x 5.36m)

Radiator, understairs cupboard, double glazed window to sides and double glazed window to front.

**Kitchen/Diner**

42' 0" x 9' 11" (12.80m x 3.03m)

Fitted with a range of wall and base units to round edged work tops, 1 1/2 sink unit with mixer taps, induction electric hob, intergrated fridge, dishwasher and oven, radiator, double glazed window.

**Utility Room**

5' 9" x 5' 9" (1.74m x 1.74m)

Base units, sink unit, plumbed for washing machine, double glazed door to rear.

**WC**

Low level wc, vanity wash hand basin, radiator.

**Extension/ Family Room**

12' 1" x 12' 0" (3.69m x 3.65m)

Under floor heating, media wall, tri folding doors to garden, velux window, double glazed window to side.

**First Floor Landing**

Storage cupboard, radiator.

**Bedroom One**

11' 5" x 12' 3" (3.48m x 3.74m)

Fitted wardrobes, radiator, double glazed window.

**Ensuite**

Low level wc, Vanity wash hand basin, shower cubical with mains shower, chrome towel rail, double glazed window.

**Bedroom Two**

12' 2" x 9' 3" (3.70m x 2.81m)

Fitted wardrobes, radiator, double glazed window.

**Bedroom Three**

9' 3" x 9' 2" (2.82m x 2.80m)

Fitted wardrobes, radiator, double glazed window.

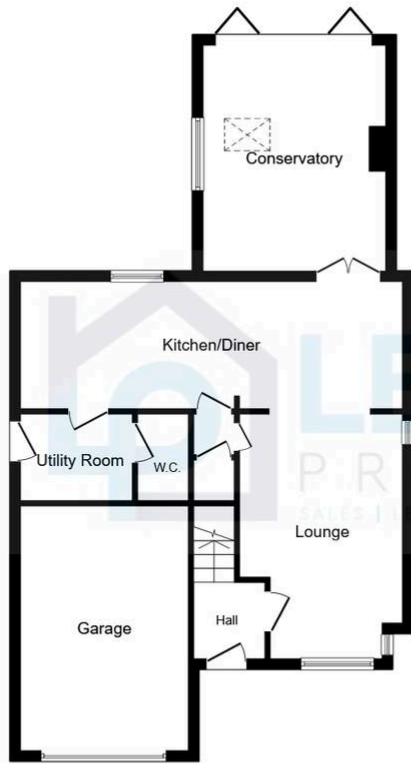
**Bedroom Four**

9' 6" x 10' 2" (2.90m x 3.10m)

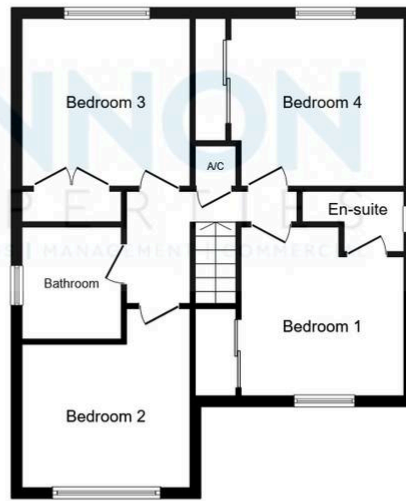
Radiator, double glazed window.

**Bathroom/wc**

Low Level wc, vanity wash hand basin, panelled bath, chrome towel rail, double glazed window.



Ground Floor



First Floor

This floor plan is for illustrative purposes only. It is not drawn to scale. Any measurements, floor areas (including any total floor area), openings and orientations are approximate. No details are guaranteed, they cannot be relied upon for any purpose and do not form any part of any agreement. No liability is taken for any error, omission or misstatement. A party must rely upon its own inspection(s). Powered by [www.Propertybox.io](http://www.Propertybox.io)







Ground Floor

First Floor

This floor plan is for illustrative purposes only. It is not drawn to scale. Any measurements, floor areas (including any total floor area), openings and orientations are approximate. No details are guaranteed, they cannot be relied upon for any purpose and do not form any part of any agreement. No liability is taken for any error, omission or misstatement. A party must rely upon its own inspection(s). Powered by [www.Propertybox.io](http://www.Propertybox.io)

You can include any text here. The text can be modified upon generating your brochure.



You can include any text here. The text can be modified upon generating your brochure.

