



## Poppy Drive, Blyth

£340,000 Freehold

This exceptional four-bedroom, two-bathroom detached house offers stylish contemporary living perfectly suited for modern families. The property welcomes you with a sleek brick facade, double-glazed windows, and a well-maintained front lawn. Inside, the home boasts a bright and spacious reception room featuring a multi fuel burner, a chic wood panel accent wall, and French doors that open directly to the garden. The heart of the home is a stunning open-plan kitchen and dining area, complete with integrated appliances, modern kitchen units, elegant wooden flooring, and abundant natural light. Upstairs, each bedroom is thoughtfully designed with plush carpeting, built-in or mirrored wardrobes, and ample natural light, creating tranquil retreats for all family members. The family bathroom and additional modern shower room are finished with contemporary fixtures and stylish tiling.

Additional highlights include a double garage, dedicated home office with built-in storage, a practical utility room

**Hallway**

Composite front door, stairs, access to the the study, downstairs w/c, lunge, utility room and the kitchen/diner.

**Study**

8' 8" x 8' 0" (2.65m x 2.43m)

UPVC window to the front and radiator.

**Lounge**

17' 5" x 10' 10" (5.31m x 3.31m)

UPVC window to the rear, UPVC French doors to the side, two radiators and multi fuel burner.

**Downstairs w/c**

6' 11" x 3' 6" (2.10m x 1.06m)

Frosted UPVC window to the side, radiator and sink.

**Utility room**

6' 5" x 5' 9" (1.95m x 1.74m)

Stainless steel sink with mixer tap, combi boiler, base units, plumbed for a washing machine and radiator.

**Kitchen/diner**

20' 0" x 9' 6" (6.10m x 2.90m)

UPVC window to the front, UPVC window to the rear, two radiators, spotlights, one and a half stainless steel sink with mixer tap, gas hob, extractor hood, tiled splash backs, wall and base units, electric grill and oven, integrated dishwasher and fridge freezer.

**Landing**

UPVC window to the rear, access to the loft, four bedrooms and bathroom.

**Bedroom one**

11' 7" x 11' 3" (3.53m x 3.42m)

UPVC window to the front, fitted wardrobes, radiator and access to the en-suite.

**En-suite**

6' 8" x 6' 3" (2.02m x 1.90m)

Frosted UPVC window to the front, radiator, sink, low level w/c, mains walk-in shower, spotlights and extractor fan.

**Bedroom two**

12' 11" x 11' 7" (3.93m x 3.52m)

UPVC window to the front and radiator.

**Bedroom three**

11' 8" x 10' 11" (3.56m x 3.33m)

UPVC window to the side and radiator.

**Bedroom four**

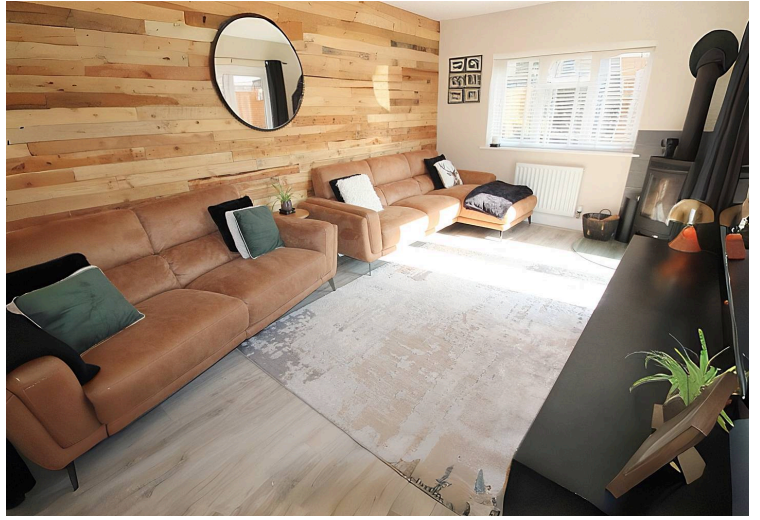
9' 7" x 7' 11" (2.93m x 2.42m)

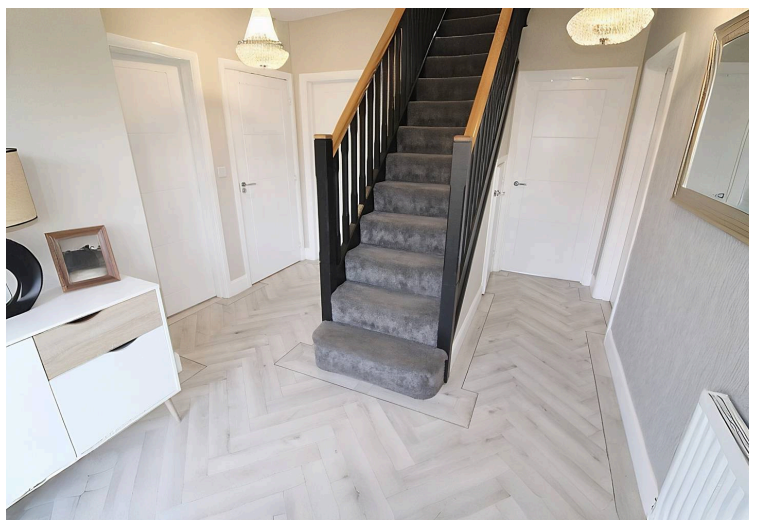
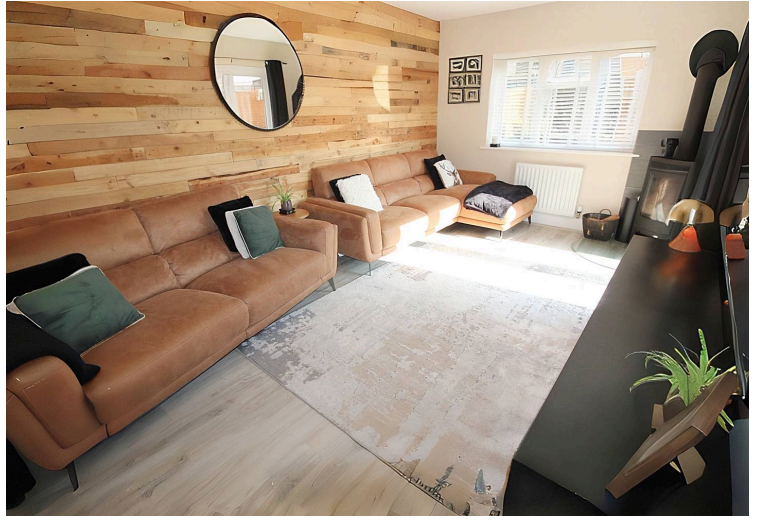
UPVC window to the rear and radiator.

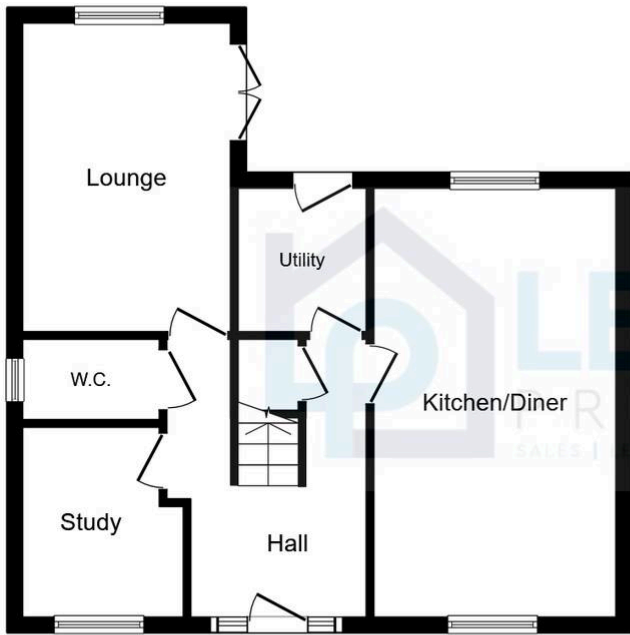
**Bathroom**

7' 8" x 6' 0" (2.34m x 1.84m)

Frosted UPVC window to the side, extractor, spotlights, low level w/c, sink and panelled bath.







Ground Floor



First Floor

This floor plan is for illustrative purposes only. It is not drawn to scale. Any measurements, floor areas (including any total floor area), openings and orientations are approximate. No details are guaranteed, they cannot be relied upon for any purpose and do not form any part of any agreement. No liability is taken for any error, omission or misstatement. A party must rely upon its own inspection(s). Powered by [www.Propertybox.io](http://www.Propertybox.io)

You can include any text here. The text can be modified upon generating your brochure.



You can include any text here. The text can be modified upon generating your brochure.

