



Stardale Avenue, Blyth

£240,000 Freehold

Presenting an exceptional opportunity to acquire a substantial five-bedroom semi-detached house, ideally suited for families seeking space, comfort, and modern conveniences. This impressive home welcomes you with a generous entrance hall leading to two versatile reception rooms, perfect for both relaxing evenings and lively gatherings. The contemporary kitchen is thoughtfully designed with ample workspace and storage, making meal preparation a delight. Each of the five bedrooms is well-proportioned and benefits from built-in wardrobe storage, ensuring clutter-free living and a restful atmosphere. The property also features a convenient downstairs w/c, adding to the practical layout. Energy efficiency is a key highlight, with solar panels installed to help reduce running costs and support sustainable living. Additional benefits include a double garage and off-road parking, complemented by a dedicated car charger for electric vehicles. This freehold residence combines modern lifestyle features with a flexible layout, presenting a rare chance to secure a spacious family home in a sought-after

Porch

UPVC front door, UPVC windows to both sides and door to the hallway.

Hallway

Stairs, radiator, under stair cupboard and access to reception room two.

Reception room two

20' 6" x 11' 7" (6.26m x 3.52m)

UPVC window to the rear, UPVC bay window to the rear, two radiators, access to the reception room one and the kitchen.

Reception room one

13' 11" x 14' 6" (4.24m x 4.42m)

UPVC bay window to the front and radiator.

Kitchen

14' 4" x 8' 4" (4.37m x 2.55m)

UPVC window to the rear, radiator, UPVC door to the rear, access to the garage, wall and base units, one and a half stainless steel sink with mixer tap and tiled splash backs.

Downstairs W/C

2' 8" x 5' 3" (0.82m x 1.61m)

Frosted UPVC window to the side, sink, low level w/c and combi boiler.

Landing

Storage cupboard, access to the boarded loft, five bedrooms and bathroom.

Bedroom one

14' 4" x 10' 6" (4.38m x 3.20m)

UPVC French doors to the front and two radiators.

Bedroom two

9' 4" x 11' 11" (2.84m x 3.63m)

UPVC window to the front, radiator and fitted sliding door wardrobes.

Bedroom three

11' 4" x 10' 8" (3.45m x 3.25m)

UPVC window to the rear, radiator and fitted wardrobes.

Bedroom four

11' 1" x 9' 1" (3.38m x 2.77m)

UPVC window to the rear and radiator.

Bedroom five

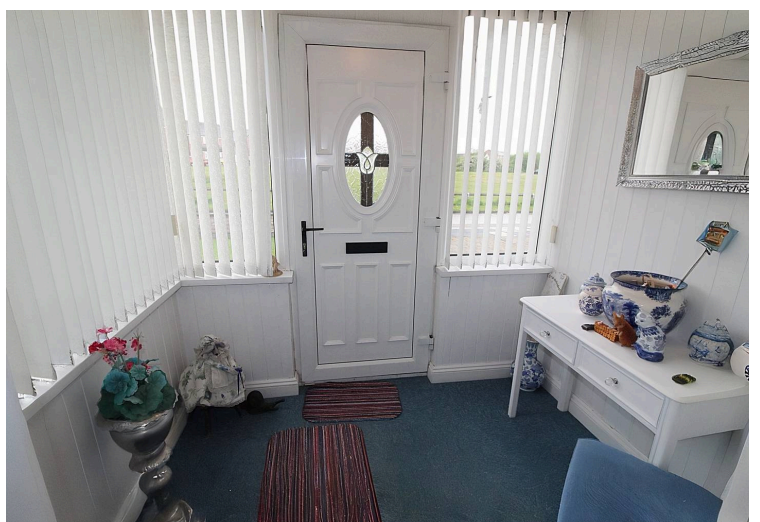
9' 2" x 8' 6" (2.80m x 2.59m)

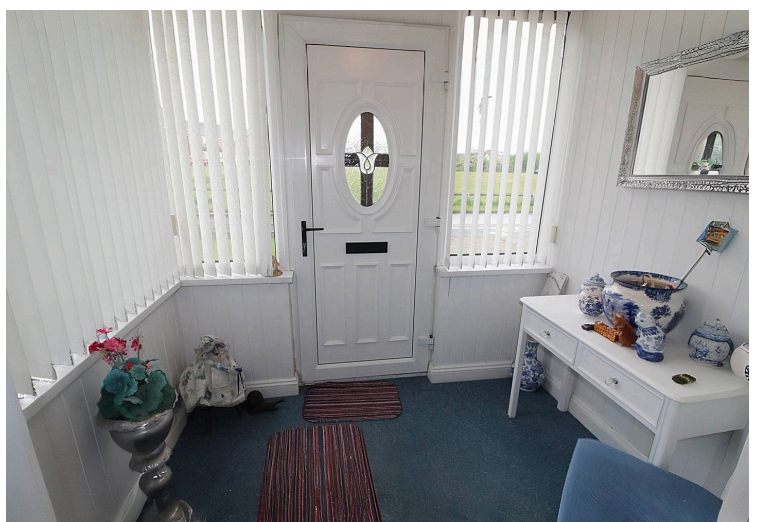
UPVC window to the front and radiator.

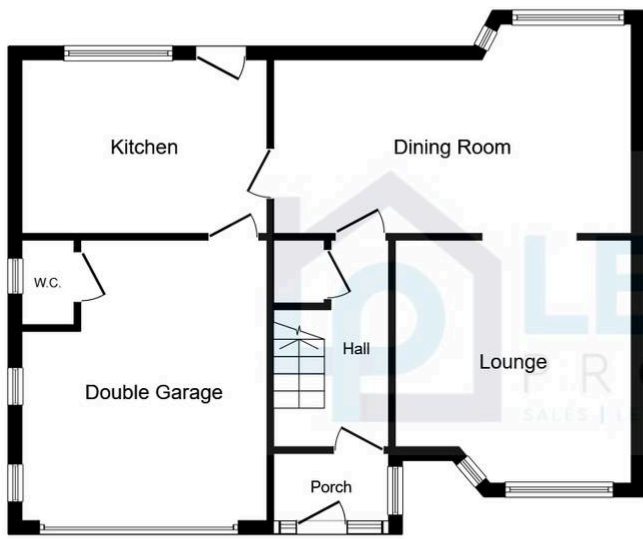
Bathroom

9' 1" x 5' 6" (2.77m x 1.68m)

Two frosted UPVC windows to the rear, vertical chrome radiator, low level w/c, sink and a 'p' shaped jacuzzi bath with over mains shower.







Ground Floor



First Floor

This floor plan is for illustrative purposes only. It is not drawn to scale. Any measurements, floor areas (including any total floor area), openings and orientations are approximate. No details are guaranteed, they cannot be relied upon for any purpose and do not form any part of any agreement. No liability is taken for any error, omission or misstatement. A party must rely upon its own inspection(s). Powered by www.Propertybox.io

You can include any text here. The text can be modified upon generating your brochure.



You can include any text here. The text can be modified upon generating your brochure.

