



Horton Manor Front Street, Blyth

£140,000 Freehold

Nestled gracefully in a charming cul-de-sac on a highly sought-after modern development, this three bedroom end terrace is available with no upper chain. From its enviable position, not overlooked the property has been thoughtfully designed for modern living. Step inside to a welcoming entrance hallway, lounge, breakfasting kitchen, downstairs cloaks/WC which adds a touch of practicality, spacious first floor landing, three bedrooms, the main with ensuite and a further bathroom/wc. Externally to the front there is off street parking and a small garden to the rear. Located within the popular Horton Manor in Bebside Blyth, close to Asda and major transport links, Internal viewing is highly recommended & interest in this property will be extremely high call soon to arrange your viewing.

Entrance

Via double glazed door to side

Hallway

Stairs to first call landing, double glazed window.

Lounge

16' 9" x 11' 11" (5.10m x 3.62m)

Two radiators, double glazed bay window to the front.

Kitchen

13' 9" x 11' 5" (4.20m x 3.48m)

Fitted with a range of wall and base units to round edged work tops, electric hob and oven, stainless steel sink unit with mixer taps, plumbed for washing machine, storage cupboard, double glazed window to rear.

Rear Hall

Double glazed door to rear.

WC

Low level wc, pedestal wash hand basin, double glazed window.

Landing

Double glazed window to side, storage cupboard, loft access.

Bedroom One

11' 11" x 8' 4" (3.64m x 2.54m)

Radiator, double glazed window to rear.

Ensuite

Low level wc, pedestal wash hand basin, shower cubical with electric shower.

Bedroom Two

14' 5" x 8' 4" (4.40m x 2.55m)

Radiator, double glazed window to the front.

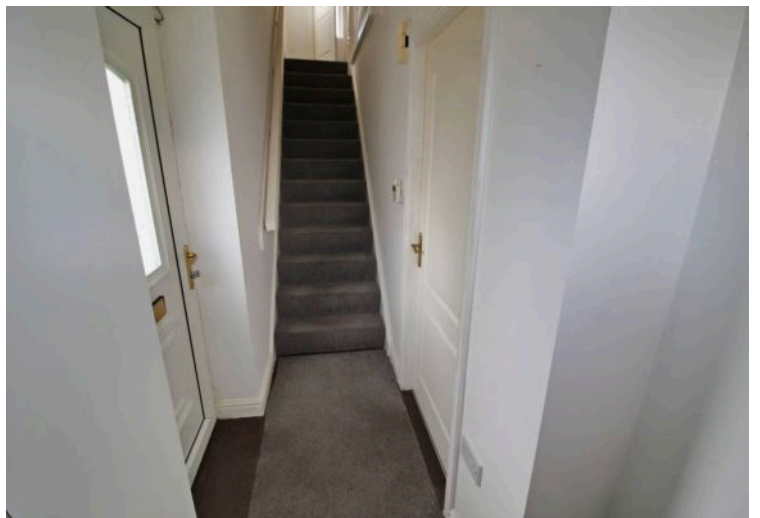
Bedroom Three

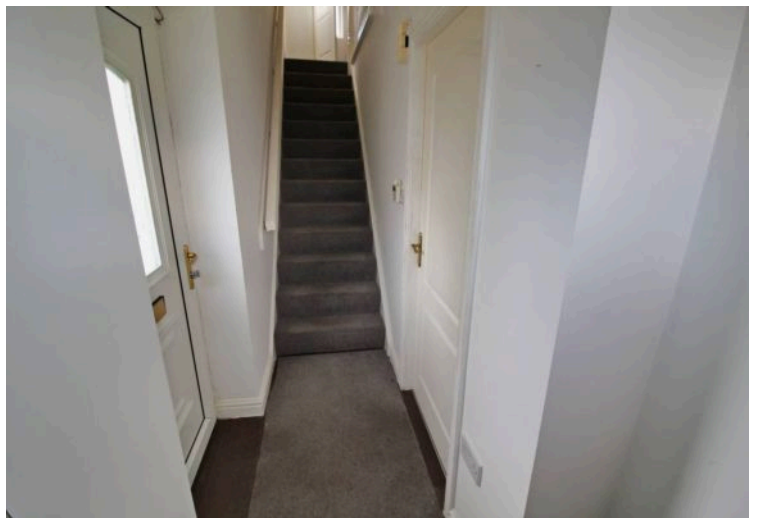
10' 3" x 7' 1" (3.13m x 2.15m)

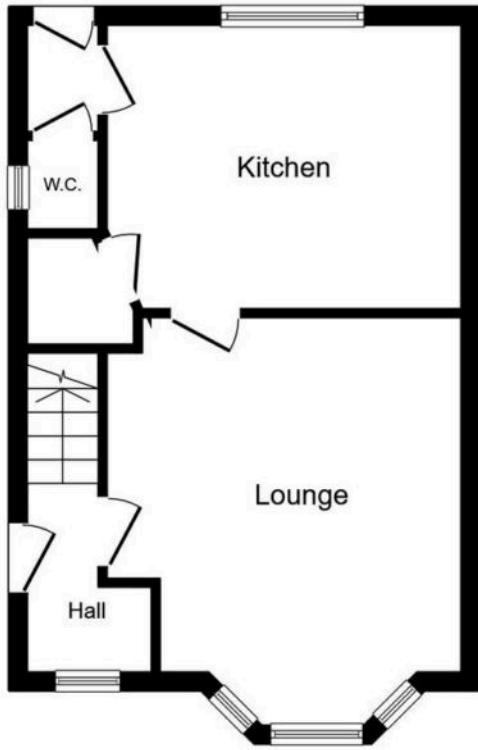
Radiator, double glazed window to the front and two double glazed window to the side.

Bathroom

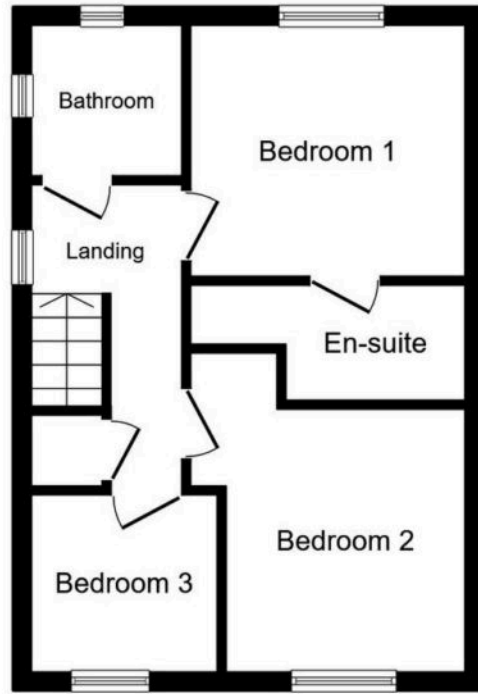
Low level wc, pedestal wash hand basin, panelled bath radiator, double glazed window.







Ground Floor



First Floor

This floor plan is for illustrative purposes only. It is not drawn to scale. Any measurements, floor areas (including any total floor area), openings and orientations are approximate. No details are guaranteed, they cannot be relied upon for any purpose and do not form any part of any agreement. No liability is taken for any error, omission or misstatement. A party must rely upon its own inspection(s). Powered by www.Propertybox.io

You can include any text here. The text can be modified upon generating your brochure.



You can include any text here. The text can be modified upon generating your brochure.

