



5 Kingsdale Avenue, Blyth

£190,000 Freehold

This exceptional three-bedroom, semi-detached house offers spacious and versatile living across a thoughtfully designed layout. The property welcomes you with a modern entrance hall featuring light wood flooring and decorative accents, leading to a bright open plan living area with a classic fireplace, large bay window, and elegant flooring. The inviting dining area, complete with rustic wooden furniture, connects seamlessly to a stylish conservatory via large patio doors, enabling effortless indoor-outdoor living. The well-appointed kitchen boasts integrated appliances including an oven, gas hob, and dishwasher, complemented by ample cabinetry and natural light. Upstairs, three generously sized bedrooms feature built-in wardrobes, large windows for abundant light, and charming decor - one with a built-in desk, ideal for a home office. The modern family bathroom offers a spacious bath-tub, tiled flooring, and a second compact bathroom adds additional convenience.

Porch

UPVC front door, wooden French doors leading to the hallway.

Hallway

Radiator, stairs, access to both reception rooms.

Reception room one

11' 3" x 16' 7" (3.42m x 5.05m)

UPVC bay window to the front and radiator.

Reception room two

8' 6" x 10' 9" (2.59m x 3.27m)

UPVC patio doors to the rear and radiator.

Conservatory

10' 1" x 10' 4" (3.08m x 3.14m)

Plastic roof, radiator, UPVC windows to three sides and a UPVC door to the side.

Kitchen

8' 10" x 10' 8" (2.68m x 3.24m)

UPVC window to the rear, one and a half sink with mixer tap, spotlights, wall and base units, gas hob, electric oven and grill, radiator, plumber for a washing machine and dish washer.

Utility room

7' 0" x 8' 5" (2.13m x 2.57m)

UPVC window to the rear, UPVC door to the rear, radiator and plumbed for a washing machine.

Wet room/ downstairs w/c

4' 2" x 4' 5" (1.26m x 1.35m)

Hand basin, low level w/c, radiator, extractor fan and electric shower.

Garage conversion

7' 0" x 16' 6" (2.13m x 5.02m)

UPVC window to the front, UPVC window to the side and radiator.

Landing

UPVC window to the side, storage cupboard, access to the loft, bathroom and three bedrooms.

Bathroom

5' 5" x 7' 6" (1.65m x 2.29m)

Frosted UPVC window to the rear and side, radiator, low level w/c, sink, paneled bath with over electric shower.

Bedroom one

9' 9" x 13' 10" (2.96m x 4.22m)

UPVC window to the front, radiator and fitted wardrobes.

Bedroom two

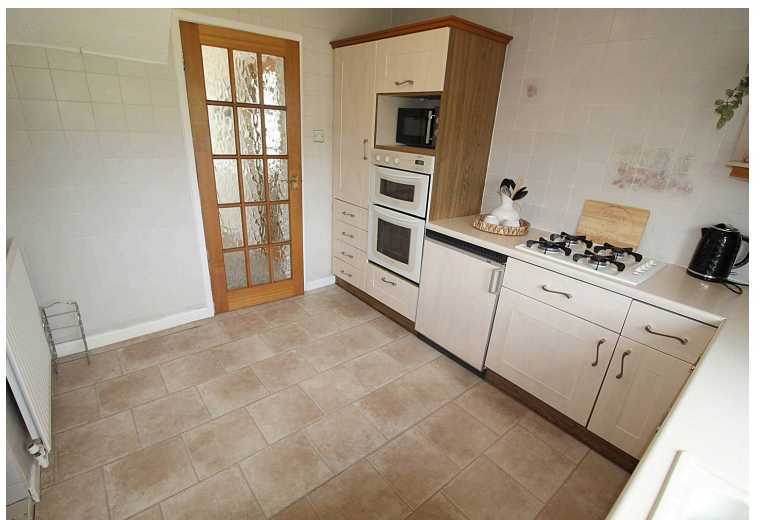
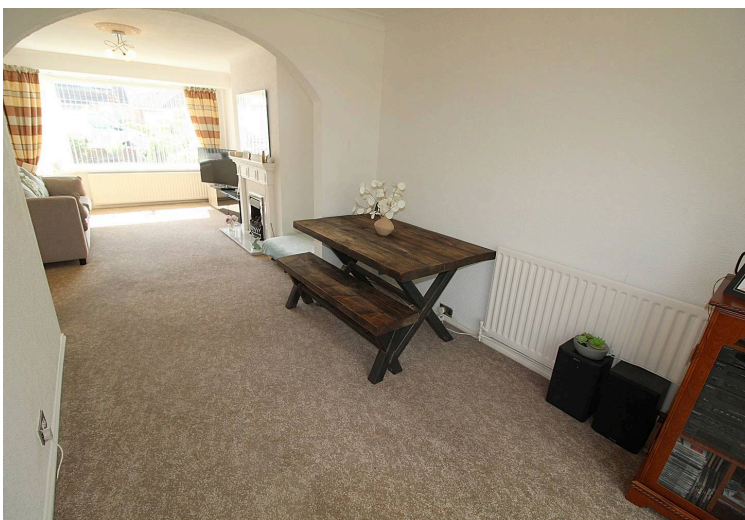
9' 9" x 11' 8" (2.98m x 3.56m)

UPVC window to the rear and radiator.

Bedroom three

7' 8" x 10' 8" (2.33m x 3.26m)

UPVC window to the front and radiator.





You can include any text here. The text can be modified upon generating your brochure.





You can include any text here. The text can be modified upon generating your brochure.

