



Canch Crescent, Hutton Park

£189,995 Freehold

This impressive three-bedroom detached house offers contemporary living across a thoughtfully designed layout, combining style, comfort, and functionality. The inviting entrance hallway sets the tone with natural light and modern finishes, leading into a spacious reception room with a feature wall, open staircase, and plush carpeting - ideal for relaxing or entertaining guests. The kitchen is a true highlight, boasting sleek cabinetry, integrated appliances, and an open plan dining area that flows effortlessly through French doors to the garden. A dedicated workspace with large windows provides an inspiring home office environment, while each bedroom showcases modern décor, ample natural light, and built-in wardrobes, including a luxurious dressing area.

Additional features abound throughout this home, including two elegantly appointed bathrooms - with contemporary tiling, the other with a soothing bath-tub and stylish fixtures. The outdoor space is perfect for family

Hallway

Front door, access to the downstairs w/c and access to the lounge.

Lounge

14' 6" x 14' 7" (4.41m x 4.44m)

UPVC window to the front, stairs and access to the kitchen/diner.

Kitchen/diner

9' 7" x 14' 7" (2.91m x 4.45m)

UPVC window, UPVC French doors, radiator, wall and base units, oven, hob, stainless steel sink with mixer tap and plumbed for a washing machine.

Downstairs w/c

UPVC window to the side, hand basin, radiator and low level w/c.

Landing

Access to the three bedrooms and bathroom.

Bedroom one

12' 10" x 8' 2" (3.92m x 2.50m)

UPVC window to the front and radiator.

Bedroom two

11' 3" x 8' 2" (3.42m x 2.50m)

UPVC window to the rear and radiator.

Bedroom three

8' 1" x 6' 1" (2.47m x 1.86m)

UPVC window to the front and radiator.

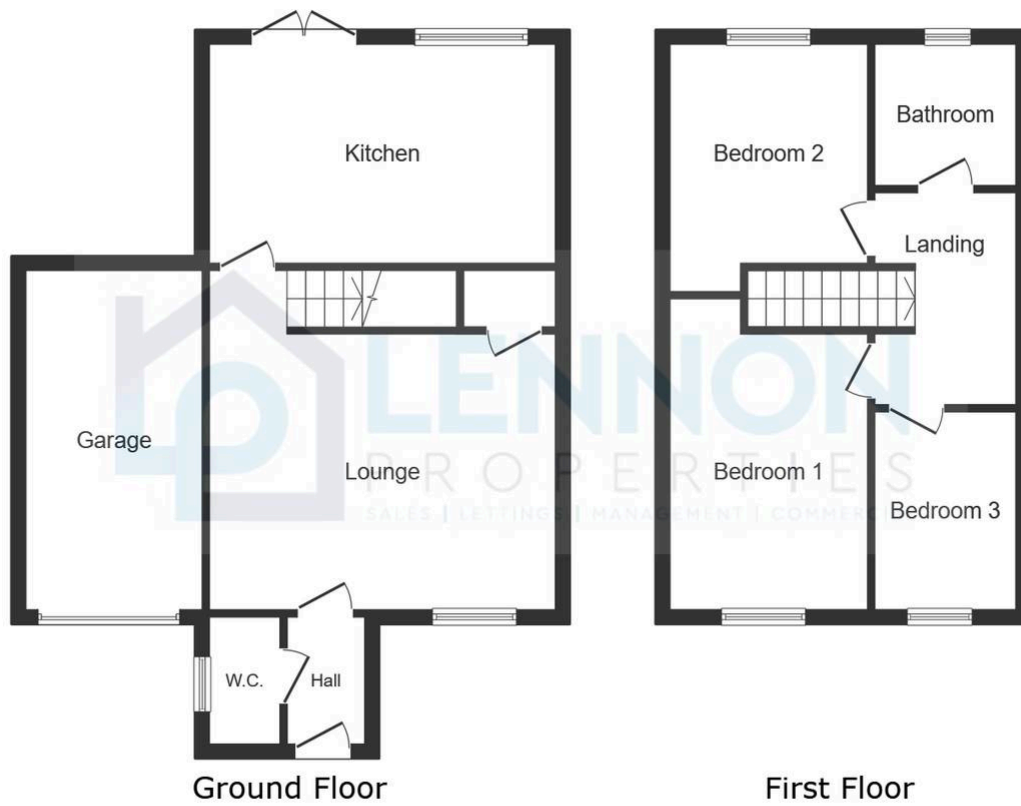
Bathroom

6' 1" x 6' 1" (1.85m x 1.85m)

Frosted UPVC window to the rear, panelled bath with over mains shower, low level w/c and hand basin.







This floor plan is for illustrative purposes only. It is not drawn to scale. Any measurements, floor areas (including any total floor area), openings and orientations are approximate. No details are guaranteed, they cannot be relied upon for any purpose and do not form any part of any agreement. No liability is taken for any error, omission or misstatement. A party must rely upon its own inspection(s). Powered by www.Propertybox.io

You can include any text here. The text can be modified upon generating your brochure.



You can include any text here. The text can be modified upon generating your brochure.

