



Craster Close, Blyth

£129,950 Freehold

Presenting this beautifully refurbished three-bedroom mid-terrace home, perfectly positioned in a popular and well-established neighbourhood. This stunning family property has been thoughtfully modernised throughout, offering a turnkey opportunity for buyers seeking style, comfort, and practicality. Upon entering, you are greeted by a welcoming hallway that leads into a spacious lounge, ideal for relaxing evenings or entertaining guests. The living area is bright and airy, with contemporary décor and ample natural light. The adjoining dining room provides a versatile space for family meals or social gatherings, seamlessly connecting to the sleek, modern kitchen. The kitchen itself boasts high-quality fittings, integrated appliances, and generous worktop space, making it a pleasure for any home chef. Upstairs, you will find three well-proportioned bedrooms, each presented in immaculate condition with fresh décor and plush carpeting. The stylish family bathroom features modern tiling, a full-size bath with overhead shower, and chic fixtures. With a full rewire and comprehensive refurbishment, this home blends

Entrance

Via double glazed front door.

Hallway

Stairs to first floor landing, understairs cupboard.

Lounge

14' 9" x 13' 5" (4.50m x 4.10m)

Electric fire, radiator, double glazed window.

Dining Room

9' 7" x 9' 6" (2.91m x 2.89m)

Radiator, double glazed window.

Kitchen

11' 9" x 9' 9" (3.59m x 2.98m)

Fitted with a range of wall and base units to round edged work tops, 1 1/2 stainless steel sink unit with mixer taps, gas hob and electric oven, extractor hood over, tiled splash backs, double glazed window.

Rear Hall

Double glazed door, access to utility room.

Utility Room

8' 7" x 4' 9" (2.61m x 1.45m)

Plumbed for washing machine, double glazed window.

Landing

Loft access, cupboard housing boiler.

Bedroom One

13' 1" x 12' 0" (3.99m x 3.67m)

Fitted wardrobe, radiator, double glazed window.

Bedroom Two

13' 0" x 9' 2" (3.96m x 2.79m)

Fitted wardrobes, radiator, double glazed window.

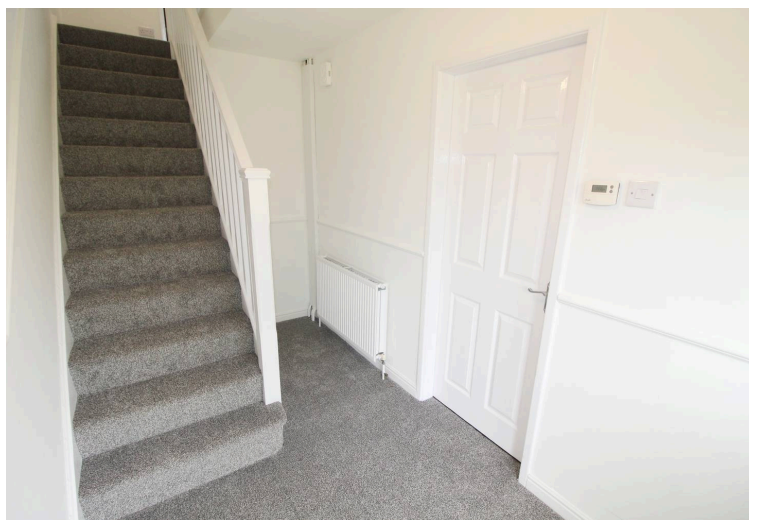
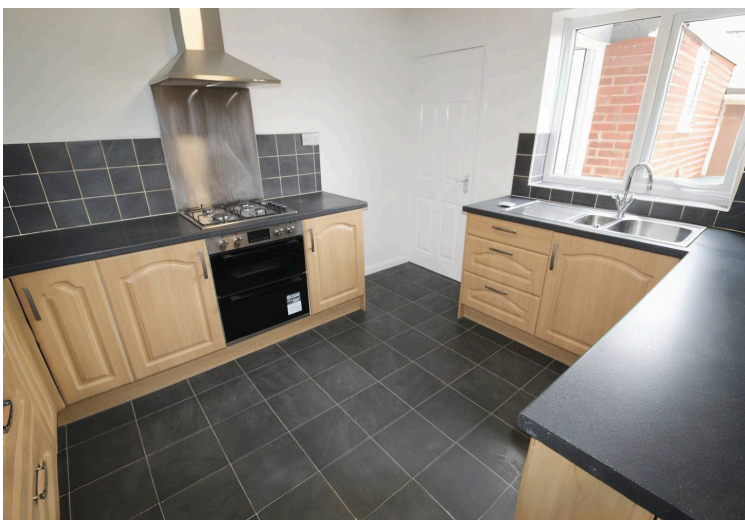
Bedroom Three

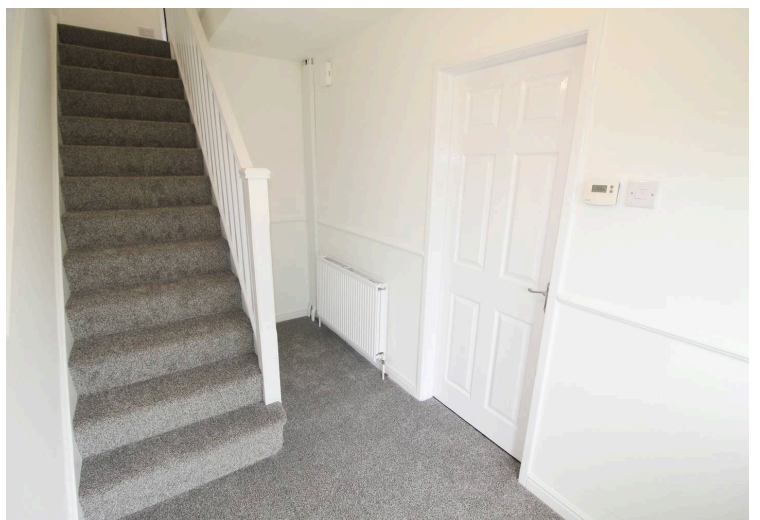
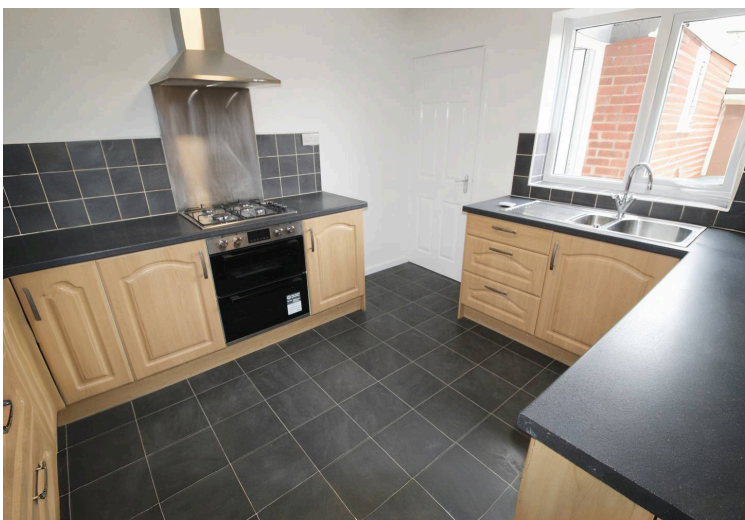
9' 7" x 8' 4" (2.92m x 2.53m)

Radiator, double glazed window.

Bathroom/WC

Low level wc, sink, panelled bath with mains shower over, chrome towel rail, spot lights, double glazed window.





You can include any text here. The text can be modified upon generating your brochure.





You can include any text here. The text can be modified upon generating your brochure.

