



## Plessey Road, Blyth

£59,950 Leasehold

This well presented two-bedroom flat offers an exceptional blend of period charm and modern comfort, making it a standout opportunity for buyers seeking both style and practicality. The welcoming reception room features a classic fireplace as a focal point, complemented by a large window that floods the space with natural light and newly laid carpet underfoot for added comfort. The modern kitchen is well-equipped with ample counter space, sleek white cabinetry, and a contemporary boiler, creating a bright and inviting environment for every-day living.

Both bedrooms are finished in a neutral palette, with generous windows ensuring a light and airy feel. Built-in storage solutions and freshly painted walls provide versatility and comfort, ideal for restful retreats or a home office setup. The bathroom is fitted with modern fixtures, a classic pedestal sink, and a full-size bath-tub with shower, all set against elegantly tiled walls for a clean and sophisticated look. Additional benefits include double glazed windows throughout, efficient radiator heating, and a welcoming hallway with textured brick-style walls.

**Hallway**

Composite front door, access to the both bedrooms and the lounge.

**Lounge**

15' 9" x 13' 6" (4.81m x 4.12m)

UPVC window to the rear and radiator.

**Kitchen**

10' 3" x 5' 3" (3.12m x 1.60m)

UPVC window to the side, combi boiler, radiator, wall and base units, sink with mixer tap and plumbed for a washing machine.

**Bedroom one**

15' 7" x 9' 0" (4.74m x 2.75m)

UPVC window to the front and radiator.

**Bedroom two**

15' 8" x 7' 11" (4.77m x 2.41m)

UPVC window to the front and radiator.

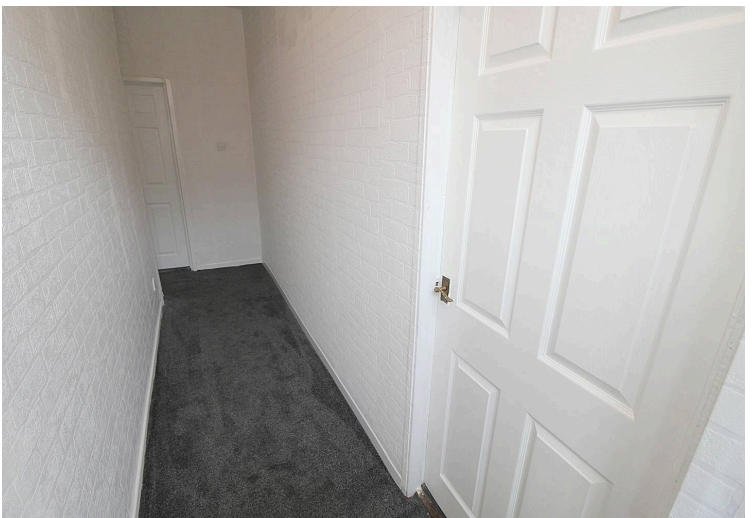
**Rear Hallway**

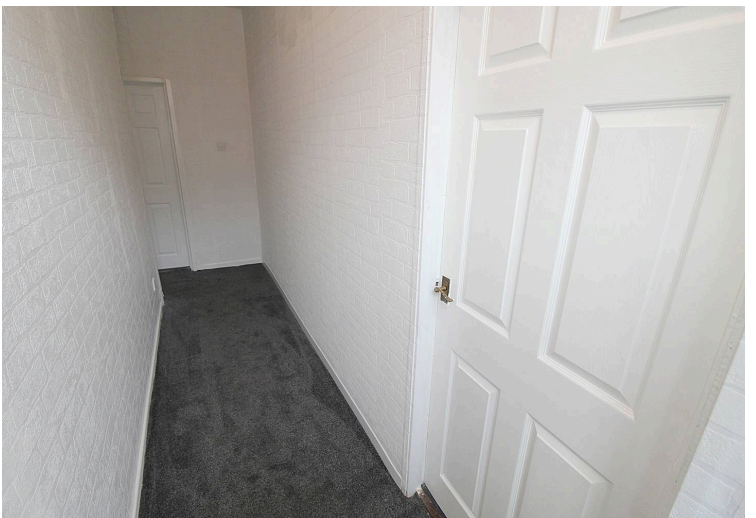
UPVC door to the rear and radiator.

**Bathroom**

10' 3" x 7' 4" (3.12m x 2.23m)

Panelled bath with over mains shower, radiator, extractor fan, sink and low level w/c.





You can include any text here. The text can be modified upon generating your brochure.





You can include any text here. The text can be modified upon generating your brochure.

