



Grenville Road, Blyth

£116,666 Freehold

This well presented three-bedroom, end-of-terrace house offers modern family living with a host of standout features. The inviting entrance welcomes you with modern doors, and carpeted stairs. The spacious reception room is bathed in natural light from large windows and is furnished with contemporary leather sofas and a decorative rug, making it perfect for relaxation or entertaining guests. An open plan kitchen-dining area boasts sleek white units and eye-catching backsplash tiles, with French doors opening directly onto the garden for seamless indoor-outdoor living. The versatile bedrooms include a master with a striking feature wall, a cheerful children's room with bunk beds, and a light third bedroom featuring a space-saving loft bed and built-in desk.

Additional highlights include a stylish family bathroom with a modern shower enclosure, elegant shelving, and a full-size bath-tub, all enhanced by abundant natural light. The practical utility space and additional compact

Hallway

Front door, access to the w/c, lounge and stairs.

Downstairs w/c

5' 7" x 3' 0" (1.70m x 0.91m)

Frosted UPVC window to the front, radiator, sink and low level w/c.

Lounge

14' 3" x 11' 11" (4.35m x 3.63m)

UPVC window to the front, radiator and cupboard under the stairs.

Kitchen/diner

15' 3" x 8' 9" (4.66m x 2.66m)

UPVC window to the rear, UPVC French doors to the rear, radiator, wall and base units, stainless steel sink with mixer tap, gas hob, electric oven, extractor hood, combi boiler and plumbed for a washing machine.

Landing

Storage cupboard, access to the three bedrooms, bathroom and partly boarded loft.

Bedroom one

11' 11" x 9' 6" (3.64m x 2.89m)

UPVC window to the front, radiator and storage cupboard.

En-suite

6' 4" x 5' 3" (1.92m x 1.60m)

Frosted UPVC window to the front, radiator, sink, low level w/c, extractor fan and mains shower.

Bedroom two

7' 7" x 9' 2" (2.31m x 2.79m)

UPVC window to the rear and radiator.

Bedroom three

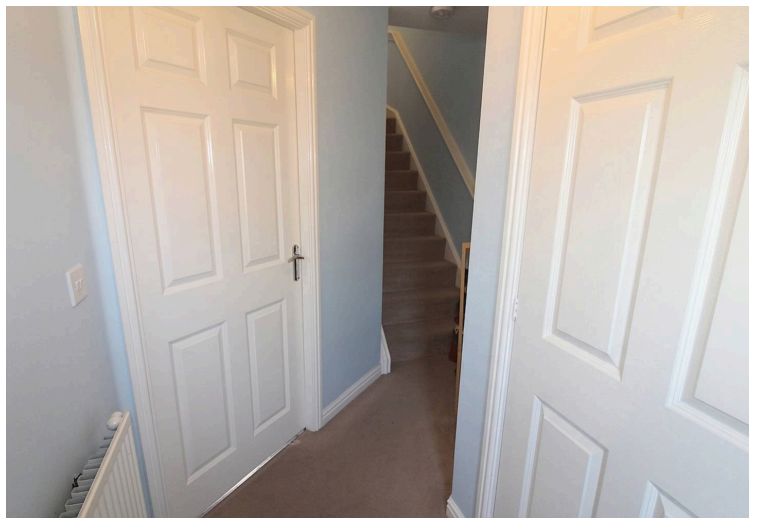
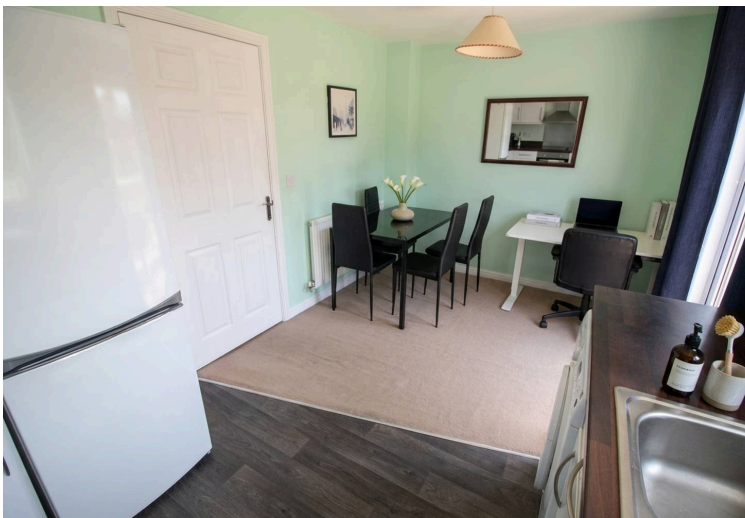
5' 10" x 7' 7" (1.78m x 2.30m)

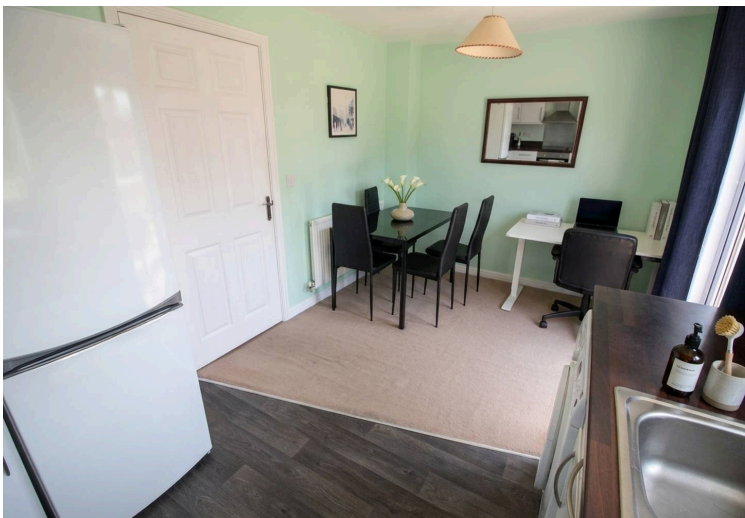
UPVC window to the rear and radiator.

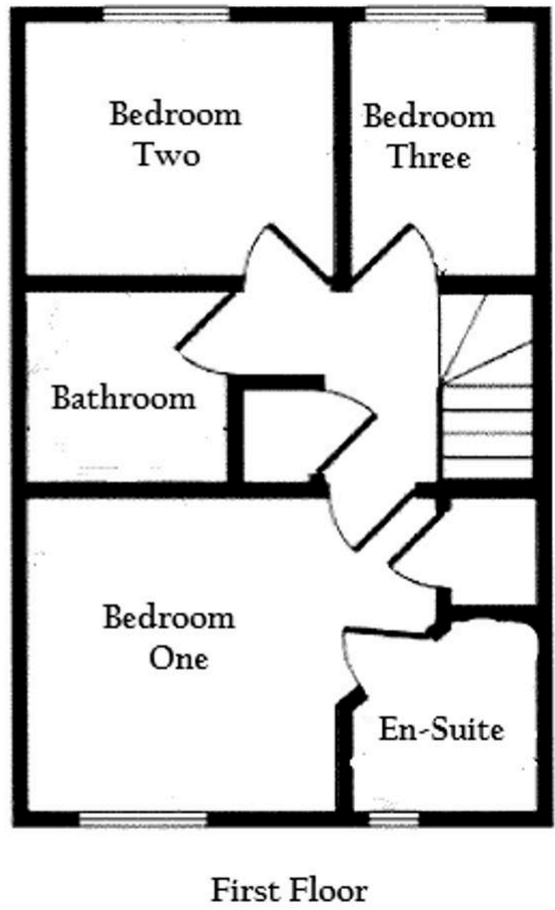
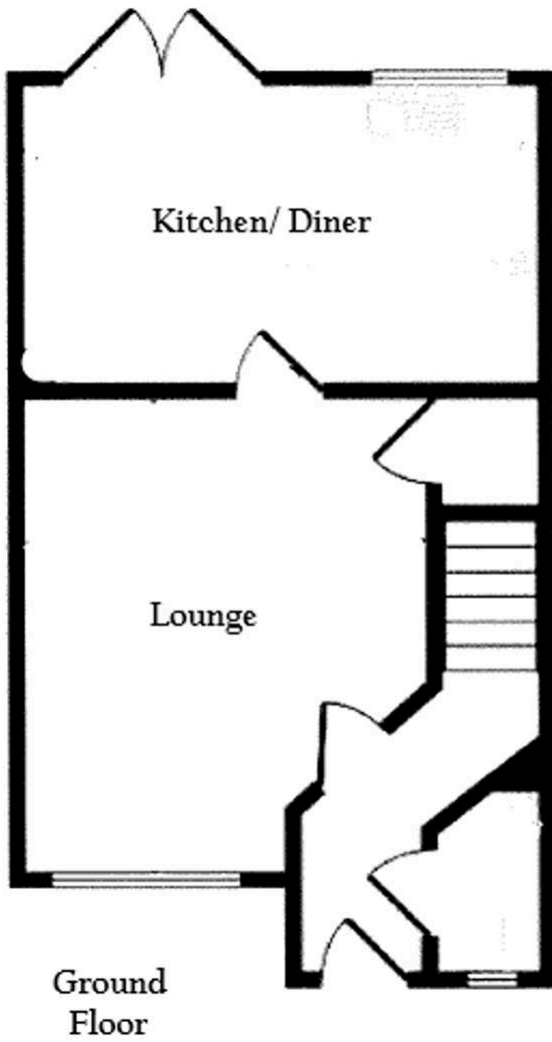
Bathroom

6' 1" x 6' 0" (1.86m x 1.82m)

Panelled bath, sink, low level w/c, extractor fan and radiator.







You can include any text here. The text can be modified upon generating your brochure.



You can include any text here. The text can be modified upon generating your brochure.

